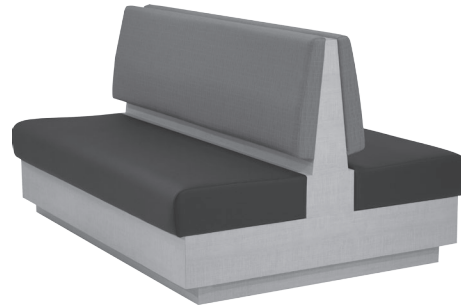


VERONA SERIES

The Verona Banquette is the perfect choice for your perimeter seating or dining needs. Seats and backs can be upholstered with matching fabrics, or choose an optional two tone or vinyl and fabric combination to match any color scheme. Frame can be finished in your choice of laminate or optional wood veneer.



VERONA BANQUETTE



BACK TO BACK VERONA WITH
CLEAN OUT OPTION

ORDERING INFORMATION

- | | |
|----------------------------|---------------------------|
| 1) Series Name | 5) Contrasting Fabrics |
| 2) Model Number | 6) Laminate Selection |
| 3) Quantity | 7) Veneer Species & Stain |
| 4) Fabric Grade and Number | 8) Optional Items |

VERONA GENERAL SPECIFICATIONS

Upholstery

Seat and back are covered in choice of fabric, vinyl, crypton, leather or COM. ERG uses only water based glues and adhesives in our upholstery process.

Frame Construction

The Verona frame is made of multi-ply hardwood and finished with your choice of laminates or optional wood veneer. All foam is fully bonded to frame. Seat cushions are 3" graded high resiliency (H.R.) block foam with back 2" (H.R.) foam, covered entirely with special bonded polyester fiber to protect final upholstery. Cushions are supported by no-sag springs. The Verona back cushion is removable and the seat frame is constructed of multi-ply hardwood and is removable. The recessed base is available in your choice of laminates.

Anchoring

Verona dining benches are easy to anchor to the floor. Hardware for securing the unit to the floor is not included

Note:

Please allow extra fabric for repeat design.

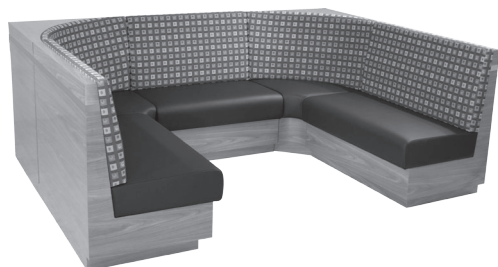
COLORS / FINISHES

Contrasting Fabric:

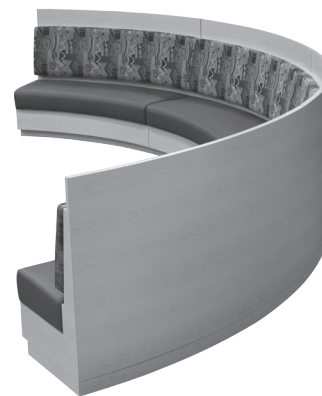
Contrasting fabrics are available, see options for pricing.

OPTIONS

- CODE: FR - CA133 Fire Retardant.
- CODE: MB - Moisture Barrier.
- CODE: 2FO - Two Fabric Option.
- CODE: USS - Underseat storage for 48" and 60".
- CODE: MTL - Metal Legs: - select color from standard finishes.
- CODE: CO - Clean Out (overall width up to 50")
- CODE: CO1 - Clean Out (overall width over 50")



VERONA CORNER CONFIGURATION

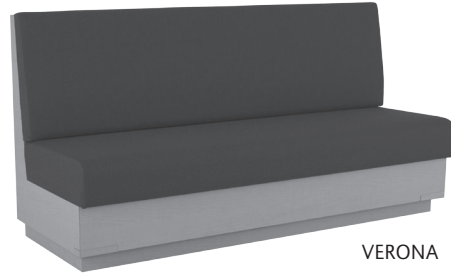


CUSTOM CURVED VERONA



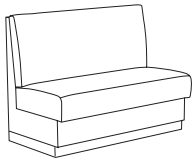
METAL LEG OPTION

DIMENSIONS	48" Wide Banquette	60" Wide Banquette	72" Wide Banquette
Seat Depth:	20"	20"	20"
Seat Height:	18"	18"	18"
Overall Width:	48"	60"	72"
Overall Depth:	27"	27"	27"
Overall Height:	36"	36"	36"
Qty./Wt.:	1 ea. 110 lbs	1 ea. 165 lbs	1 ea. 210 lbs



VERONA

MODEL / DESCRIPTION / LIST PRICING



650 48" Wide Banquette - Laminate Frame COM Yardage: Total: 4 Yds. / Back: 2 Yds. / Seat: 2 Yds.

COM	GR1	GR2	GR3	GR4	GR5	GR6	GR7	GR8	GR9	GR10	LEA
\$2865	\$3066	\$3189	\$3316	\$3449	\$3587	\$3730	\$3880	\$4035	\$4196	\$4364	\$5158

For unfinished back laminate frame deduct \$200

651 48" Wide Banquette - Wood Veneer Frame COM Yardage: Total: 4 Yds. / Back: 2 Yds. / Seat: 2 Yds.

COM	GR1	GR2	GR3	GR4	GR5	GR6	GR7	GR8	GR9	GR10	LEA
\$4011	\$4292	\$4463	\$4642	\$4828	\$5021	\$5222	\$5430	\$5648	\$5874	\$6109	\$7220

For unfinished back veneer frame deduct \$400

652 60" Wide Banquette - Laminate Frame COM Yardage: Total: 5 Yds. / Back: 2.5 Yds. / Seat: 2.5 Yds.

COM	GR1	GR2	GR3	GR4	GR5	GR6	GR7	GR8	GR9	GR10	LEA
\$4230	\$4527	\$4708	\$4896	\$5092	\$5295	\$5507	\$5728	\$5957	\$6195	\$6443	\$7615

For unfinished back laminate frame deduct \$225

653 60" Wide Banquette - Wood Veneer Frame COM Yardage: Total: 5 Yds. / Back: 2.5 Yds. / Seat: 2.5 Yds.

COM	GR1	GR2	GR3	GR4	GR5	GR6	GR7	GR8	GR9	GR10	LEA
\$5923	\$6338	\$6591	\$6855	\$7129	\$7414	\$7711	\$8019	\$8340	\$8674	\$9020	\$10661

For unfinished back veneer frame deduct \$450

654 72" Wide Banquette - Laminate Frame COM Yardage: Total: 6 Yds. / Back: 3 Yds. / Seat: 3 Yds.

COM	GR1	GR2	GR3	GR4	GR5	GR6	GR7	GR8	GR9	GR10	LEA
\$5732	\$6133	\$6379	\$6634	\$6899	\$7175	\$7462	\$7760	\$8071	\$8394	\$8729	\$10318

For unfinished back laminate frame deduct \$250

655 72" Wide Banquette - Wood Veneer Frame COM Yardage: Total: 6 Yds. / Back: 3 Yds. / Seat: 3 Yds.

COM	GR1	GR2	GR3	GR4	GR5	GR6	GR7	GR8	GR9	GR10	LEA
\$8022	\$8584	\$8927	\$9284	\$9655	\$10042	\$10443	\$10861	\$11295	\$11747	\$12217	\$14440

For unfinished back veneer frame deduct \$500

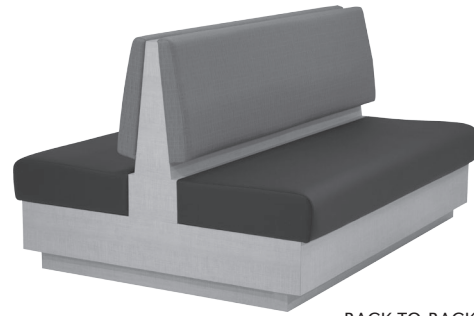
OPTIONS

Add upcharge to list price and code to model number

FR	CA133 Fire Retardant per yard	\$90/yd.
MB	Moisture Barrier - up to 60" width	\$125 each
MB	Moisture Barrier - over 60" width	\$200 each
2FO	Two Fabric Option	\$98

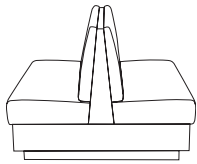
USS	Under Seat Fully Lined Storage - for 48" and 60"	\$450
MTL	Metal Legs - per unit	subtract \$50
CO	Clean Out (overall width up to 50")	\$250
CO1	Clean Out (overall width over 50")	\$385

DIMENSIONS	48" Wide Banquette	60" Wide Banquette	72" Wide Banquette
Seat Depth:	20"	20"	20"
Seat Height:	18"	18"	18"
Overall Width:	48"	60"	72"
Overall Depth:	52"	52"	52"
Overall Height:	36"	36"	36"
Qty./Wt.:	1 ea./150 lbs.	1 ea./200 lbs.	1 ea./245 lbs.



BACK TO BACK VERONA
WITH CLEAN OUT OPTION

MODEL / DESCRIPTION / LIST PRICING



650-B2B 48" Wide Back to Back - Laminate Frame COM Yardage: Total: 8 Yds. / Back: 4 Yds. / Seat: 4 Yds.

COM	GR1	GR2	GR3	GR4	GR5	GR6	GR7	GR8	GR9	GR10	LEA
\$5445	\$5826	\$6060	\$6302	\$6554	\$6816	\$7089	\$7372	\$7667	\$7974	\$8293	\$9802

651-B2B 48" Wide Back to Back - Wood Veneer Frame COM Yardage: Total: 8 Yds. / Back: 4 Yds. / Seat: 4 Yds.

COM	GR1	GR2	GR3	GR4	GR5	GR6	GR7	GR8	GR9	GR10	LEA
\$7621	\$8154	\$8481	\$8820	\$9173	\$9539	\$9921	\$10318	\$10731	\$11160	\$11606	\$13718

652-B2B 60" Wide Back to Back - Laminate Frame COM Yardage: Total: 10 Yds. / Back: 5 Yds. / Seat: 5 Yds.

COM	GR1	GR2	GR3	GR4	GR5	GR6	GR7	GR8	GR9	GR10	LEA
\$8038	\$8600	\$8944	\$9302	\$9674	\$10061	\$10464	\$10882	\$11318	\$11770	\$12241	\$14468

653-B2B 60" Wide Back to Back - Wood Veneer Frame COM Yardage: Total: 10 Yds. / Back: 5 Yds. / Seat: 5 Yds.

COM	GR1	GR2	GR3	GR4	GR5	GR6	GR7	GR8	GR9	GR10	LEA
\$11250	\$12037	\$12519	\$13019	\$13540	\$14082	\$14645	\$15231	\$15840	\$16474	\$17133	\$20249

654-B2B 72" Wide Back to Back - Laminate Frame COM Yardage: Total: 12 Yds. / Back: 6 Yds. / Seat: 6 Yds.

COM	GR1	GR2	GR3	GR4	GR5	GR6	GR7	GR8	GR9	GR10	LEA
\$10890	\$11652	\$12118	\$12603	\$13107	\$13631	\$14176	\$14743	\$15333	\$15946	\$16584	\$19601

655-B2B 72" Wide Back to Back - Wood Veneer Frame COM Yardage: Total: 12 Yds. / Back: 6 Yds. / Seat: 6 Yds.

COM	GR1	GR2	GR3	GR4	GR5	GR6	GR7	GR8	GR9	GR10	LEA
\$15242	\$16309	\$16961	\$17640	\$18345	\$19079	\$19842	\$20636	\$21461	\$22320	\$23212	\$27435

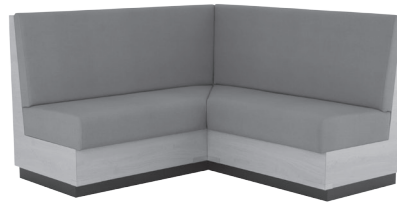
OPTIONS

Add upcharge to list price and code to model number

FR	CA133 Fire Retardant per yard	\$90/yd.
MB	Moisture Barrier - up to 60" width	\$125 each
MB	Moisture Barrier - over 60" width	\$200 each
2FO	Two Fabric Option	\$98

USS	Under Seat Fully Lined Storage - for 48" and 60"	\$450
MTL	Metal Legs - per unit	subtract \$50
CO	Clean Out (overall width up to 50")	\$250
CO1	Clean Out (overall width over 50")	\$385

DIMENSIONS	86" Wide Corner Banquette	L/R End Corner Banquettes	90° Corner Banquettes
Seat Depth:	18.5"	18.5"	18.5"
Seat Width:	34"	19"	18.5"
Seat Height:	18"	18"	18"
Overall Width:	86"	48"	30"
Overall Depth:	27"	27"	30"
Overall Height:	36"	36"	36"
Qty./Wt.:	1 ea./220 lbs.	1 ea./125 lbs.	1 ea./150 lbs.

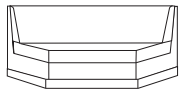


VERONA LEFT END AND RIGHT END
CORNER BANQUETTES



VERONA 90° CORNER UNIT

MODEL / DESCRIPTION / LIST PRICING

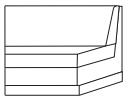


656 86" Wide Corner Banquette - Laminate Frame COM Yardage: Total: 7 Yds. / Back: 3.5 Yds. / Seat: 3.5 Yds.

COM	GR1	GR2	GR3	GR4	GR5	GR6	GR7	GR8	GR9	GR10	LEA
\$6304	\$6745	\$7015	\$7296	\$7588	\$7891	\$8207	\$8535	\$8877	\$9232	\$9601	\$11348

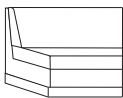
657 86" Wide Corner Banquette - Wood Veneer Frame COM Yardage: Total: 7 Yds. / Back: 3.5 Yds. / Seat: 3.5 Yds.

COM	GR1	GR2	GR3	GR4	GR5	GR6	GR7	GR8	GR9	GR10	LEA
\$9327	\$9980	\$10379	\$10794	\$11226	\$11675	\$12142	\$12628	\$13133	\$13658	\$14205	\$16789



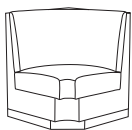
658L/R Left or Right End Corner Banquette - Laminate Frame COM Yardage: Total: 5 Yds. / Back: 2.5 Yds. / Seat: 2.5 Yds.

COM	GR1	GR2	GR3	GR4	GR5	GR6	GR7	GR8	GR9	GR10	LEA
\$3791	\$4056	\$4218	\$4387	\$4562	\$4745	\$4935	\$5132	\$5337	\$5551	\$5773	\$6823



659L/R Left or Right End Corner Banquette - Wood Veneer Frame COM Yardage: Total: 5 Yds. / Back: 2.5 Yds. / Seat: 2.5 Yds.

COM	GR1	GR2	GR3	GR4	GR5	GR6	GR7	GR8	GR9	GR10	LEA
\$5586	\$5977	\$6216	\$6465	\$6723	\$6992	\$7272	\$7563	\$7865	\$8180	\$8507	\$10055



660 Verona 90° Corner Unit - Laminate Frame COM Yardage: Total: 6.5 Yds. / Back: 4.5 Yds. / Seat: 2 Yds.

COM	GR1	GR2	GR3	GR4	GR5	GR6	GR7	GR8	GR9	GR10	LEA
\$2594	\$2775	\$2886	\$3001	\$3122	\$3246	\$3376	\$3511	\$3652	\$3798	\$3950	\$4668

661 Verona 90° Corner Unit - Wood Veneer Frame COM Yardage: Total: 6.5 Yds. / Back: 4.5 Yds. / Seat: 2 Yds.

COM	GR1	GR2	GR3	GR4	GR5	GR6	GR7	GR8	GR9	GR10	LEA
\$3890	\$4163	\$4329	\$4502	\$4682	\$4870	\$5064	\$5267	\$5478	\$5697	\$5925	\$7002

OPTIONS

Add upcharge to list price and code to model number

FR	CA133 Fire Retardant per yard	\$90/yd.
MB	Moisture Barrier - up to 60" width	\$125 each
MB	Moisture Barrier - over 60" width	\$200 each
2FO	Two Fabric Option	\$98

USS	Under Seat Fully Lined Storage - for 48" and 60"	\$450
MTL	Metal Legs - per unit	subtract \$50
CO	Clean Out (overall width up to 50")	\$250
CO1	Clean Out (overall width over 50")	\$385