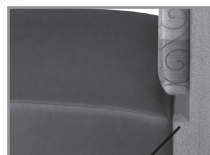


PALERMO SERIES

The Palermo Banquette is the perfect choice for your dining needs. Seats and backs can be upholstered with matching fabrics, or choose an optional two tone or vinyl and fabric combination to match any color scheme. The Palermo frame is made of multi-ply hardwood and finished with your choice of laminates or veneer.

**Finished in
Laminate or Veneer.**



OPTIONAL CLEAN OUT



PALERMO BANQUETTE

ORDERING INFORMATION

- | | |
|--------------------------|----------------------------|
| 1) Series Name | 5) Contrasting Fabrics |
| 2) Model Number | 6) Laminate Selection Back |
| 3) Quantity | 7) Plinth Base Finish |
| 4) Fabric Grade & Number | 8) Optional Items |

PALERMO BANQUETTE SPECIFICATIONS
Frame Construction

The Palermo frame is made of multi-ply hardwood and finished with your choice of laminates or veneer. All foam is fully bonded to frame. Seat cushions are 3" graded high resiliency (H.R.) block foam with back 2" (H.R.) foam, covered entirely with special bonded polyester fiber to protect final upholstery. Seat frame is constructed of multi-ply hardwood and is removable for easy cleaning. The recessed base is available in a choice of laminate or unfinished so that you can add your own cove base or carpet.

Upholstery

Seat and back are covered in choice of fabric, vinyl, crypton, leather or COM. ERG uses only water based glues and adhesives in our upholstery process.

Anchoring

Palermo dining benches are easy to anchor to the floor. Floor mount instructions can be provided by customer service. Hardware for anchoring bench to the floor is not included.

Privacy Panel

Optional privacy panels are available in upholstery or laminate.

Note:

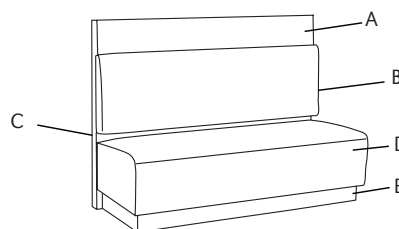
Please allow extra fabric for repeat design.

COLORS / FINISHES
Laminate or Veneer:

Your choice of laminate or veneer.

OPTIONS

- CODE: FR - CA133 Fire Retardant.
- CODE: MB -Moisture Barrier.
- CODE: 2FO - Two Fabric Option.
- CODE: PANEL - Privacy panel.
- CODE: UFB - Unfinished Plinth Base.
- CODE: CO - Clean Out (overall width up to 50")
- CODE: CO1 - Clean Out (overall width over 50")

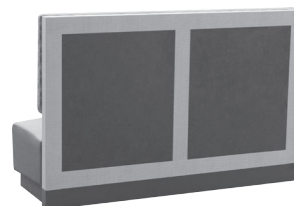


- A - Optional Privacy Panel - Specify fabric or laminate
- B - Seat Back - Choice of fabrics
- C - Frame - Specify laminate or veneer
- D - Seat - Choice of fabrics
- E - Recessed Base - Specify unfinished or laminate



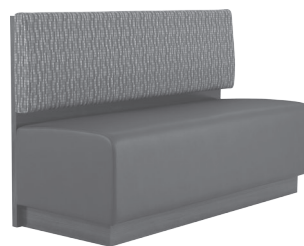
CUSTOM CURVED PALERMO

CUSTOM DESIGN
Your requests are welcome!
ERG will quote prices upon receipt
of specific requirements. Please
call Customer Service.



CUSTOM LAMINATE INLAY

DIMENSIONS	48" Wide Banquette	60" Wide Banquette	72" Wide Banquette
Seat Depth:	20"	20"	20"
Seat Height:	18"	18"	18"
Overall Depth:	24"	24"	24"
Overall Width:	48"	60"	72"
Overall Height:	36"	36"	36"
Qty./Wt.:	1 ea./110 lbs.	1 ea./165 lbs.	1 ea./210 lbs.



PALERMO BANQUETTE

MODEL / DESCRIPTION / LIST PRICING

670 48" Wide Banquette – Laminate Frame COM Yardage: Total: 4.5 Yds. / Back: 2 Yds. / Seat: 2.5 Yds.

COM	GR1	GR2	GR3	GR4	GR5	GR6	GR7	GR8	GR9	GR10	LEA
\$3630	\$3884	\$4039	\$4201	\$4369	\$4544	\$4725	\$4914	\$5111	\$5315	\$5528	\$6534

671 48" Wide Banquette – Wood Veneer Frame COM Yardage: Total: 4.5 Yds. / Back: 2 Yds. / Seat: 2.5 Yds.

COM	GR1	GR2	GR3	GR4	GR5	GR6	GR7	GR8	GR9	GR10	LEA
\$5081	\$5437	\$5654	\$5880	\$6115	\$6360	\$6614	\$6879	\$7154	\$7440	\$7738	\$9146

672 60" Wide Banquette – Laminate Frame COM Yardage: Total: 5 Yds. / Back: 2.75 Yds. / Seat: 3 Yds.

COM	GR1	GR2	GR3	GR4	GR5	GR6	GR7	GR8	GR9	GR10	LEA
\$5359	\$5734	\$5964	\$6202	\$6450	\$6708	\$6977	\$7256	\$7546	\$7848	\$8162	\$9647

673 60" Wide Banquette – Wood Veneer Frame COM Yardage: Total: 5 Yds. / Back: 2.5 Yds. / Seat: 2.5 Yds.

COM	GR1	GR2	GR3	GR4	GR5	GR6	GR7	GR8	GR9	GR10	LEA
\$7502	\$8027	\$8349	\$8682	\$9030	\$9391	\$9767	\$10157	\$10564	\$10986	\$11426	\$13504

674 72" Wide Banquette – Laminate Frame COM Yardage: Total: 6 Yds. / Back: 3 Yds. / Seat: 3 Yds.

COM	GR1	GR2	GR3	GR4	GR5	GR6	GR7	GR8	GR9	GR10	LEA
\$7260	\$7768	\$8079	\$8402	\$8738	\$9087	\$9451	\$9829	\$10222	\$10631	\$11056	\$13067

675 72" Wide Banquette – Wood Veneer Frame COM Yardage: Total: 6 Yds. / Back: 3 Yds. / Seat: 3 Yds.

COM	GR1	GR2	GR3	GR4	GR5	GR6	GR7	GR8	GR9	GR10	LEA
\$10163	\$10874	\$11309	\$11762	\$12232	\$12721	\$13230	\$13760	\$14310	\$14882	\$15478	\$18293

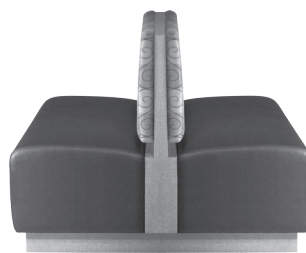
OPTIONS

Add upcharge to list price and code to model number

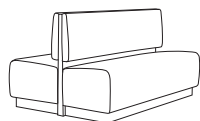
FR	CA133 Fire Retardant per yard	\$90/yd.
MB	Moisture Barrier - up to 60" width	\$125 each
MB	Moisture Barrier - over 60" width	\$200 each
2FO	Two Fabric Option	\$98

PANEL	Call ERG customer service for quote	Call
UFB	Unfinished Plinth Base	Deduct \$80
CO	Clean Out (overall width up to 50")	\$250
CO1	Clean Out (overall width over 50")	\$385

DIMENSIONS	48" Wide Banquette	60" Wide Banquette	72" Wide Banquette
Seat Depth:	20"	20"	20"
Seat Height:	18"	18"	18"
Overall Depth:	47"	47"	47"
Overall Width:	48"	60"	72"
Overall Height:	36"	36"	36"
Qty./Wt.:	1 ea./110 lbs.	1 ea./165 lbs.	1 ea./210 lbs.



PALERMO BACK-TO-BACK BANQUETTE

MODEL / DESCRIPTION / LIST PRICING

670-B2B 48" Wide Back-to-Back Banquette – Laminate Frame COM Yardage: Total: 9 Yds. / Back: 4 Yds. / Seat: 5 Yds.

COM	GR1	GR2	GR3	GR4	GR5	GR6	GR7	GR8	GR9	GR10	LEA
\$6896	\$7379	\$7674	\$7981	\$8301	\$8633	\$8978	\$9337	\$9710	\$10099	\$10503	\$12414

671-B2B 48" Wide Back-to-Back Banquette – Wood Veneer COM Yardage: Total: 9 Yds. / Back: 4 Yds. / Seat: 5 Yds.

COM	GR1	GR2	GR3	GR4	GR5	GR6	GR7	GR8	GR9	GR10	LEA
\$9654	\$10329	\$10743	\$11172	\$11619	\$12084	\$12567	\$13070	\$13593	\$14137	\$14702	\$17377

672-B2B 60" Wide Back-to-Back Banquette – Laminate Frame COM Yardage: Total: 10 Yds. / Back: 5 Yds. / Seat: 5 Yds.

COM	GR1	GR2	GR3	GR4	GR5	GR6	GR7	GR8	GR9	GR10	LEA
\$10183	\$10896	\$11332	\$11785	\$12256	\$12746	\$13256	\$13787	\$14338	\$14912	\$15508	\$18329

673-B2B 60" Wide Back-to-Back Banquette – Wood Veneer COM Yardage: Total: 10 Yds. / Back: 5 Yds. / Seat: 5 Yds.

COM	GR1	GR2	GR3	GR4	GR5	GR6	GR7	GR8	GR9	GR10	LEA
\$14254	\$15252	\$15862	\$16496	\$17156	\$17842	\$18556	\$19298	\$20070	\$20873	\$21708	\$25657

674-B2B 72" Wide Back-to-Back Banquette – Laminate Frame COM Yardage: Total: 12 Yds. / Back: 6 Yds. / Seat: 6 Yds.

COM	GR1	GR2	GR3	GR4	GR5	GR6	GR7	GR8	GR9	GR10	LEA
\$13794	\$14759	\$15350	\$15964	\$16602	\$17266	\$17957	\$18675	\$19422	\$20199	\$21007	\$24829

675-B2B 72" Wide Back-to-Back Banquette – Wood Veneer COM Yardage: Total: 12 Yds. / Back: 6 Yds. / Seat: 6 Yds.

COM	GR1	GR2	GR3	GR4	GR5	GR6	GR7	GR8	GR9	GR10	LEA
\$19308	\$20660	\$21486	\$22346	\$23240	\$24169	\$25136	\$26142	\$27187	\$28275	\$29406	\$34755

OPTIONS

Add upcharge to list price and code to model number

FR	CA133 Fire Retardant per yard	\$90/yd.
MB	Moisture Barrier - up to 60" width	\$125 each
MB	Moisture Barrier - over 60" width	\$200 each
2FO	Two Fabric Option	\$98

PANEL	Call ERG customer service for quote	Call
UFB	Unfinished Plinth Base	Deduct \$80
CO	Clean Out (overall width up to 50")	\$250
CO1	Clean Out (overall width over 50")	\$385