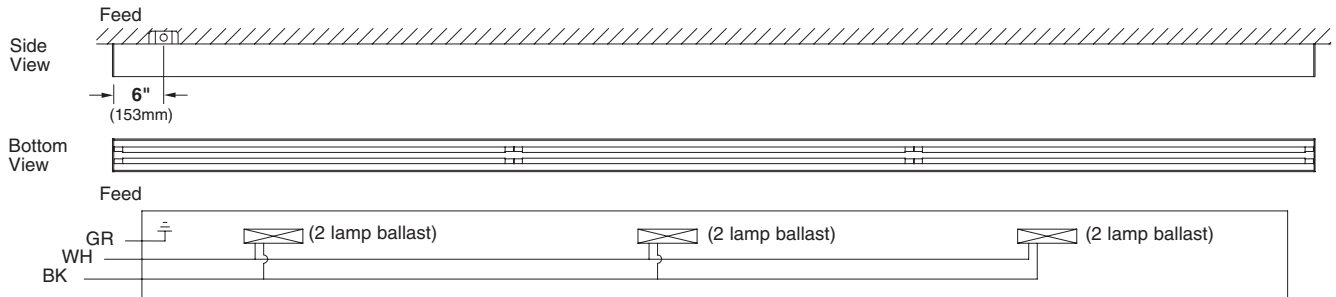
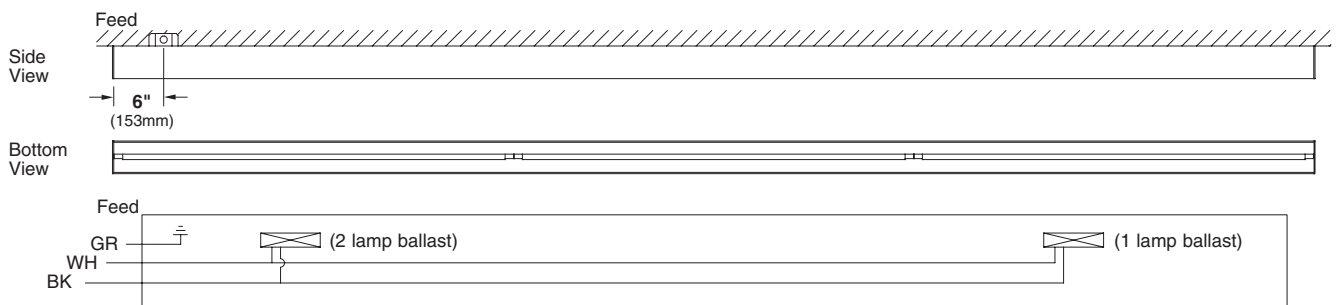


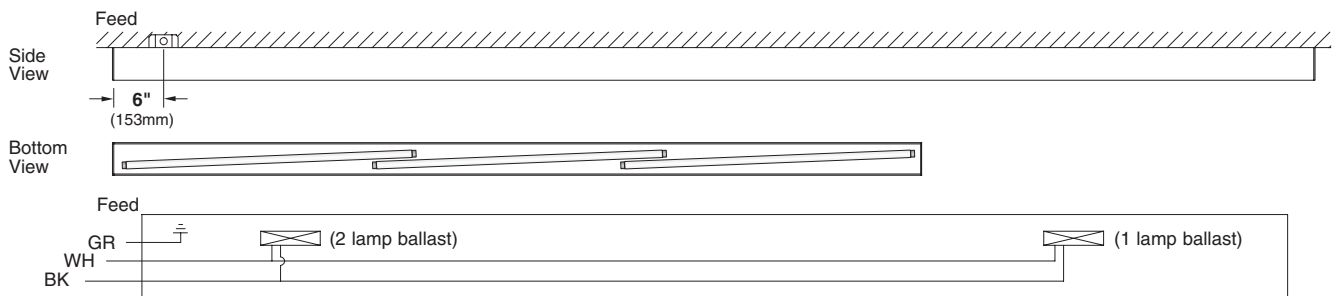
## Standard Wiring (2 lamp fixtures)



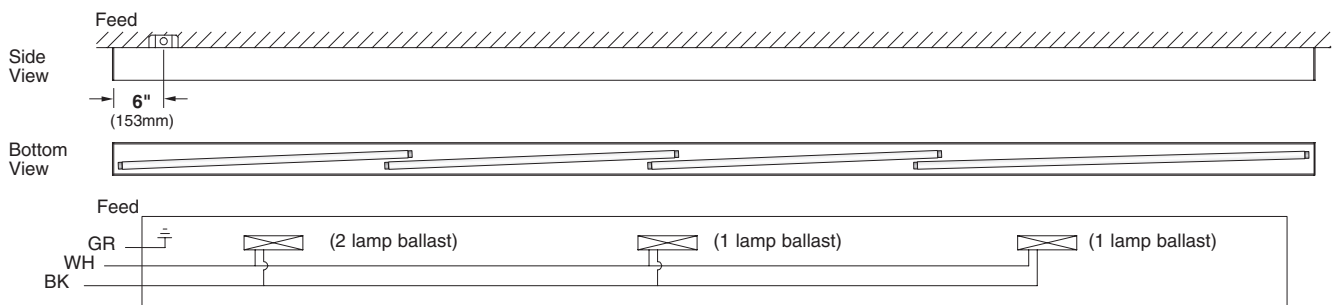
## Standard Wiring (1 lamp fixtures)



## Standard Wiring (8' Staggered Lamps - single lamp fixtures)

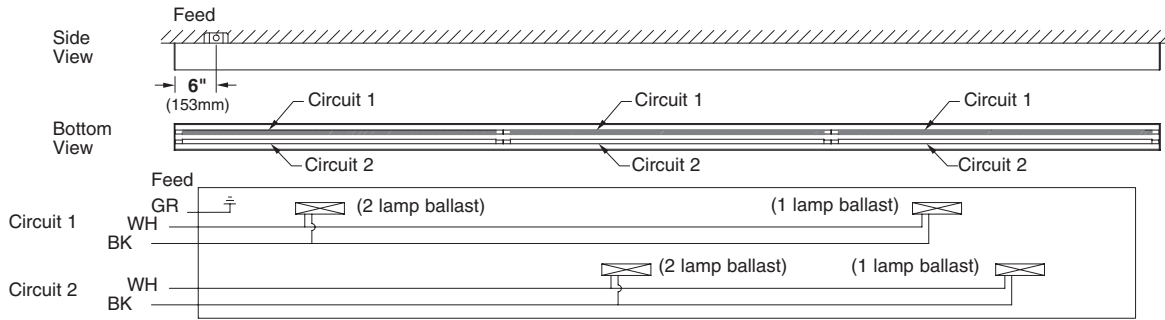


## Standard Wiring (12' Staggered Lamps - single lamp fixtures)



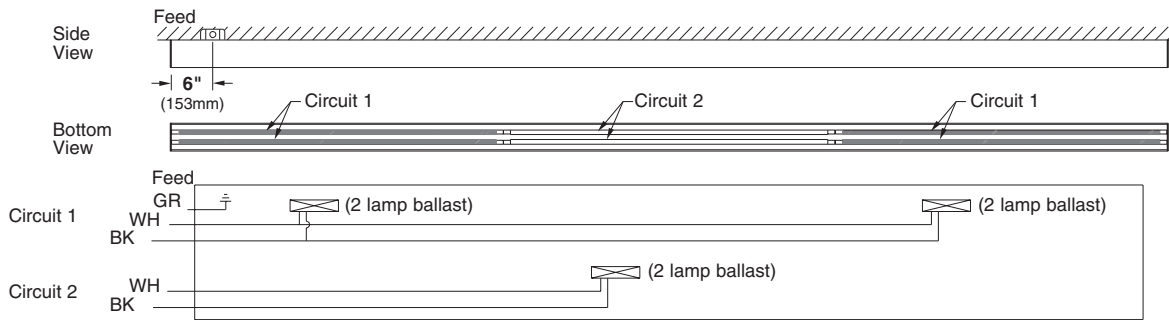
## Tandem Wiring (Parallel Circuits / 2 lamp fixtures)

Ordering Code: **TC**



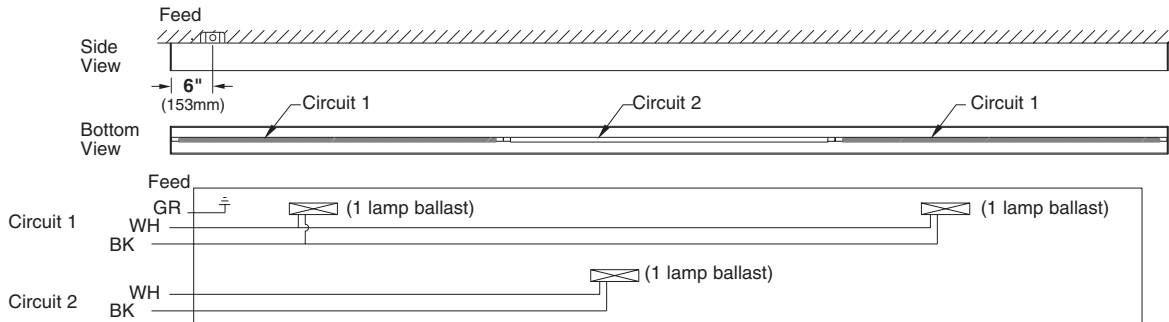
## Tandem Wiring (Staggered Circuits / 2 lamp fixtures)

Ordering Code: **TA**



## Tandem Wiring (Staggered Circuits / 1 lamp fixtures)

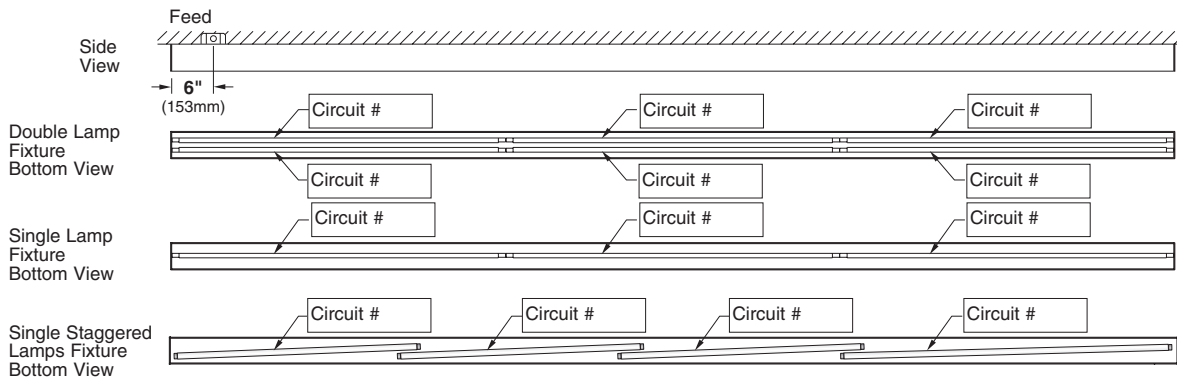
Ordering Code: **TA**



## Tandem Wiring (Job Specific Circuitry / 1 or 2 lamp fixtures)

Ordering Code: **TM**

Note: Specify circuits for each lamp.

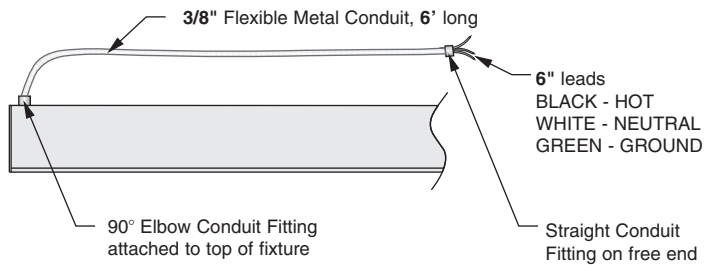


# M-Series Flex Whips



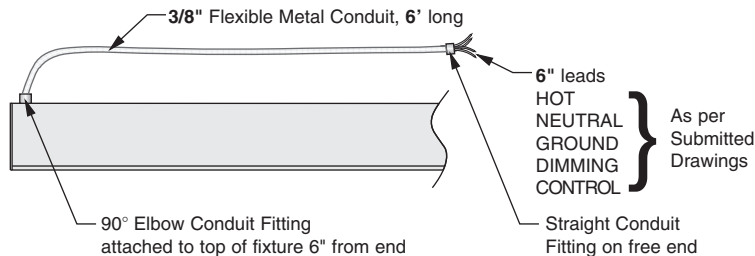
## M60 Flex Whip (Standard Wiring) available for Recessed fixtures

Ordering Code: **FW**



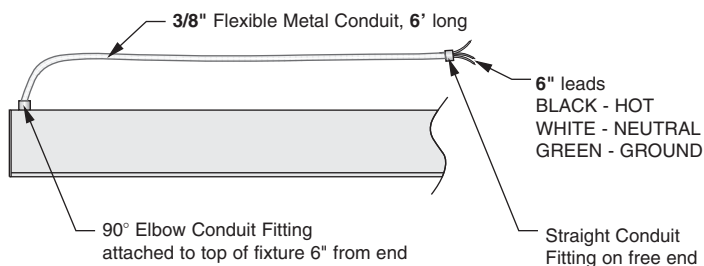
## M60 Flex Whip (Dimming Wiring) available for Recessed fixtures

Ordering Code: **FW1**



## M100 Flex Whip (Standard Wiring) available for Tannenbaum, Super-Recessed, Recessed and Semi-Recessed fixtures

Ordering Code: **FW**



## M100 Flex Whip (Dimming Wiring) available for Tannenbaum, Super Recessed, Recessed and Semi-Recessed fixtures

Ordering Code: **FW1**

