

:: workware™



WORK

CONFIDENTLY

DIGITALLY

SEAMLESSLY

COLLABORATIVELY

INTUITIVELY

SMOOTHLY

ELEGANTLY

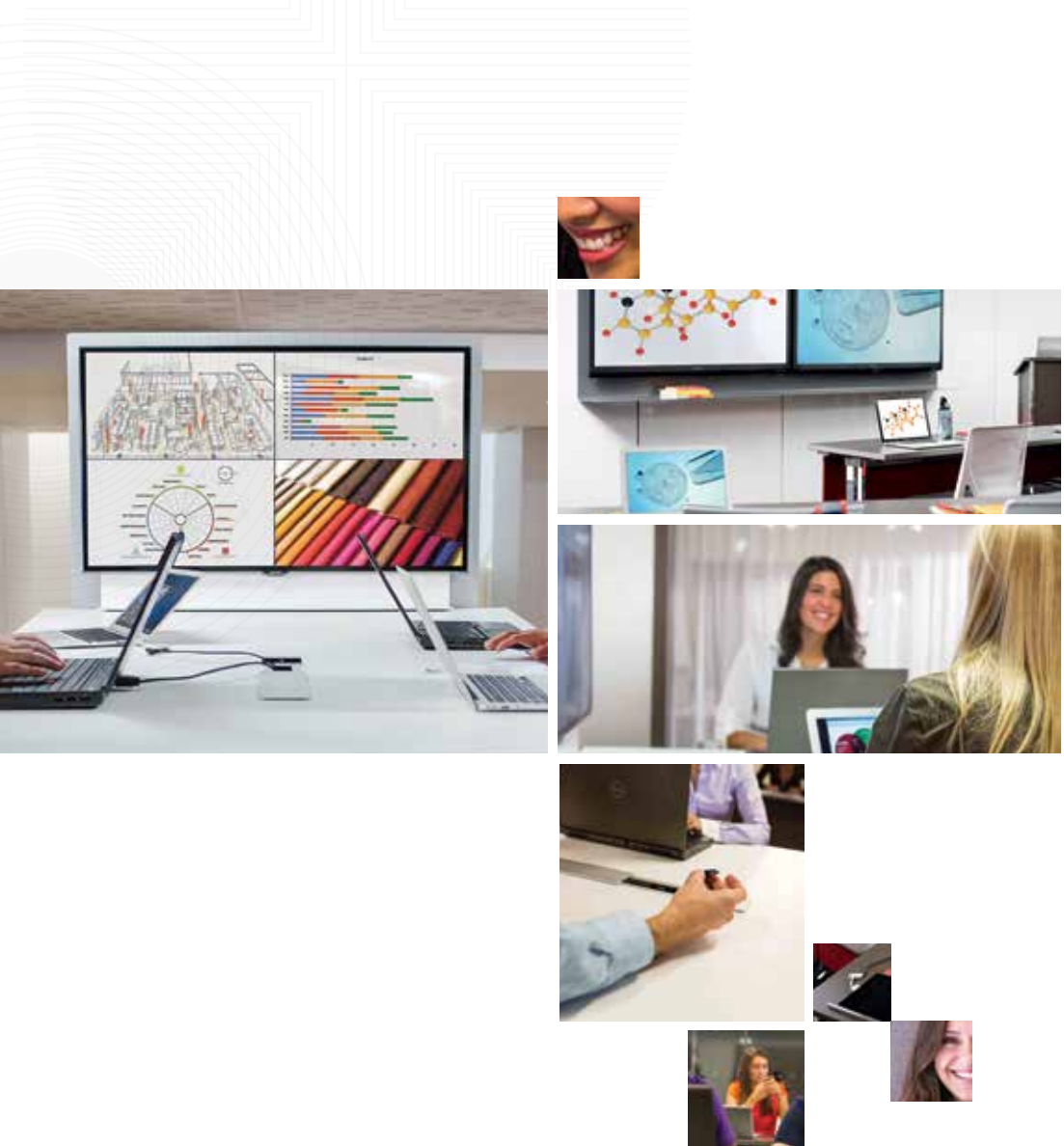
SECURELY

ANYWHERE

TOGETHER



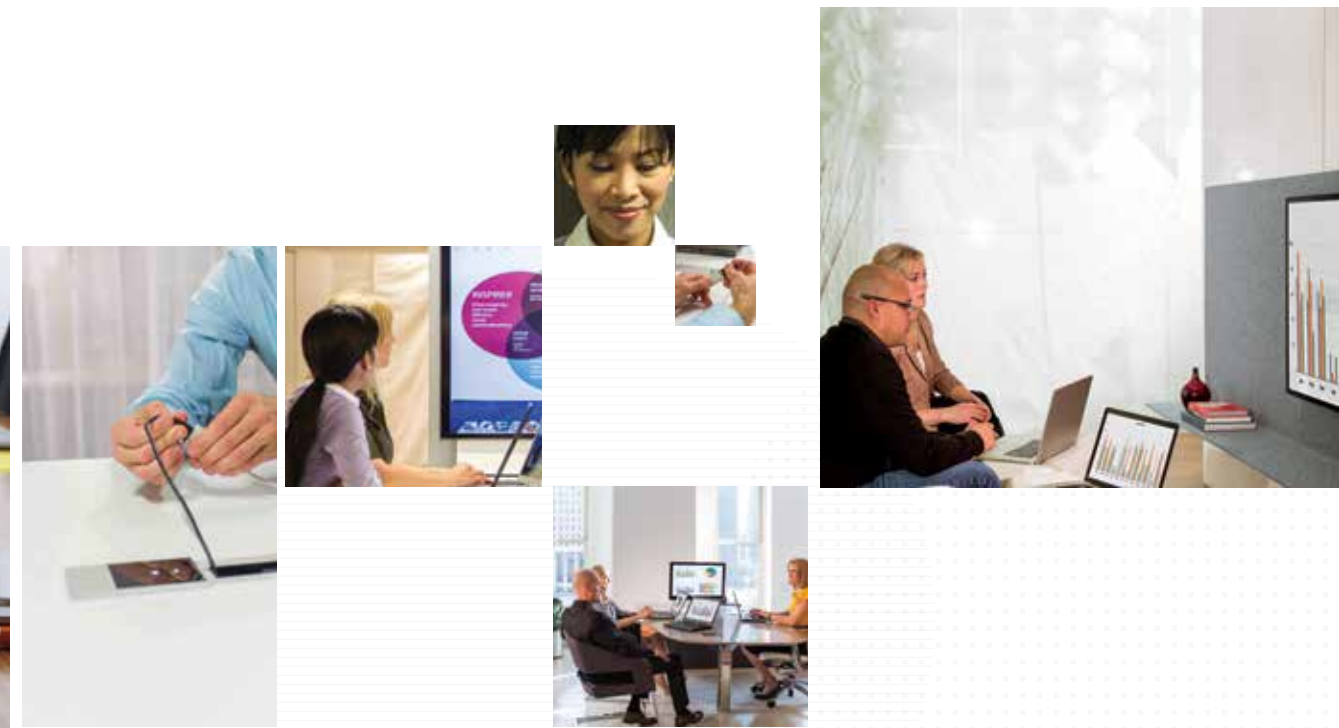
CONNECT AND SHARE AT THE PACE OF IDEAS



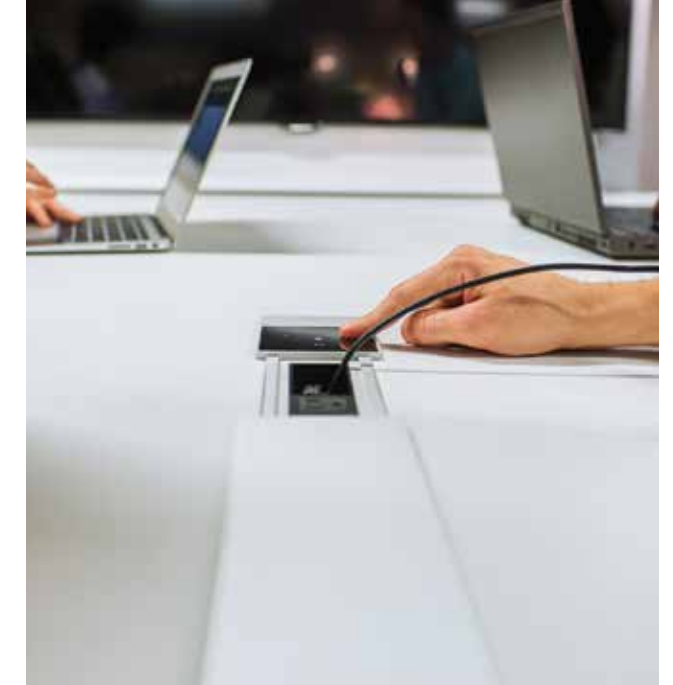
Now You're Flowing

An uninterrupted exchange of information is essential for communication and creative problem solving in groups. That's just what workware connect was designed to bring to the workplace.

With options for wireless or wired connectivity, workware removes technological barriers that often hinder collaboration at work. Users simply plug in or launch software on their laptop to connect wirelessly to external video displays. It's that easy for groups to connect, share content, and keep ideas flowing.



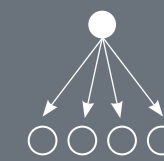
Work is an activity, not a place. Increasingly, it's a group activity: sharing progress, touching base, comparing notes, considering multiple points of view. With workware, these activities get easier for everyone.



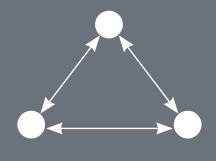
Up and Running and Down to Business

Simple, secure connections with wired or wireless options configure automatically to most laptops and monitors — single or dual. Quad view allows up to four wireless users to share content simultaneously on one display. Workware enables a variety of ways for people to interact. Change point of view by switching from one participant to the next with a simple touch for wired users, or a click for wireless. When teams create together, workware makes it easy for any contributor to take the lead at any time.

SHARE



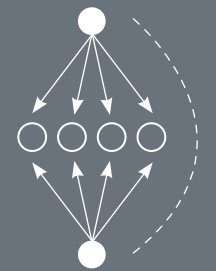
CONNECT



COMPARE



SWITCH





Designed to Fit – Anywhere

When coworkers get together to get work done, ideas need to take center stage — not communication tools. That was the thought behind the Haworth Design Studio's discreet, low-profile design for the workware connect module. The easy sliding door blends in wherever workware is used: tactical, execution, presentation, social, and strategic thinking spaces.

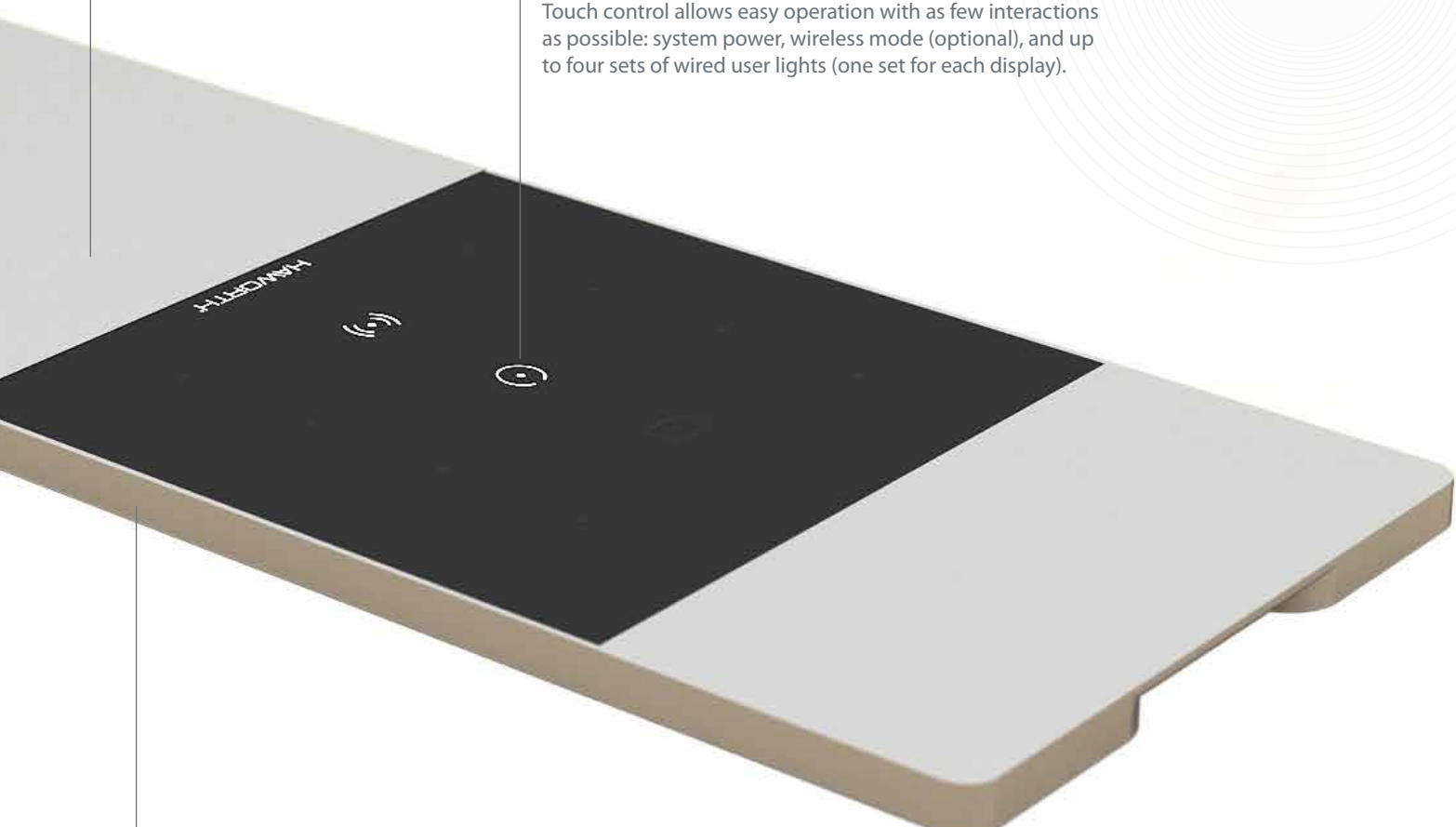


BYOT (BRING YOUR OWN TABLE)

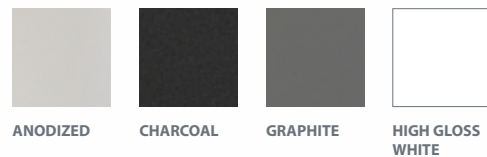
All configurations are available in two sizes — wide or narrow (shown) — to allow easy retrofitting into existing furniture applications. This modular approach also makes future upgrades a snap. Plus, ongoing support and software updates from Haworth ensure that all workware connect options are virtually future-proof.

TOUCH AND GO

Touch control allows easy operation with as few interactions as possible: system power, wireless mode (optional), and up to four sets of wired user lights (one set for each display).



FINISHES



WORRY-FREE WIRELESS

Wireless security is important to everyone. With workware, wireless connectivity is built upon your existing network infrastructure, taking advantage of your existing firewalls and other security features. Additionally, each session generates a unique 4-digit login code for secure access to protect your information.

Connectivity Options

At Haworth, we understand that nothing about work today is one size fits all. So workware connect provides scalable options for connecting and sharing.



Cable Sharing

Content sharers pass a cable from one user to the next.



Wireless Sharing

An unlimited number of users can share content using on-screen control.



Cable Sharing with Touch Control

Up to four users pass control by touching a button. No cable passing needed.



Wireless Sharing with Wired Cable Back-up

Combines wireless sharing with wired back-up.

Show and View

Haworth's workware product line also includes workware view products. Options include, table or wall mounted (on drywall or Enclose™ moveable walls) and, mobile easels that allow for greater flexibility to make any space ready for sharing and creating.

Wall Mount



Table Mount



(Available for drywall or Enclose™ moveable walls)



Mobile Easel





HAWORTH®

For more information call 800.344.2600 or 616.393.3000.
Download additional copies at haworth.com

This brochure is printed on FSC® certified U2:XG™ paper, manufactured with electricity in the form of renewable energy (wind, hydro, biogas) and contains a minimum of 30% post-consumer recovered fiber. FSC is a global benchmark for responsible forest management.



Haworth is a registered trademark of Haworth, Inc.
Printed in USA ©Haworth, Inc 2013 11.13 Item #2353
Haworth.com | Haworth-Europe.com | Haworth-Asia.com