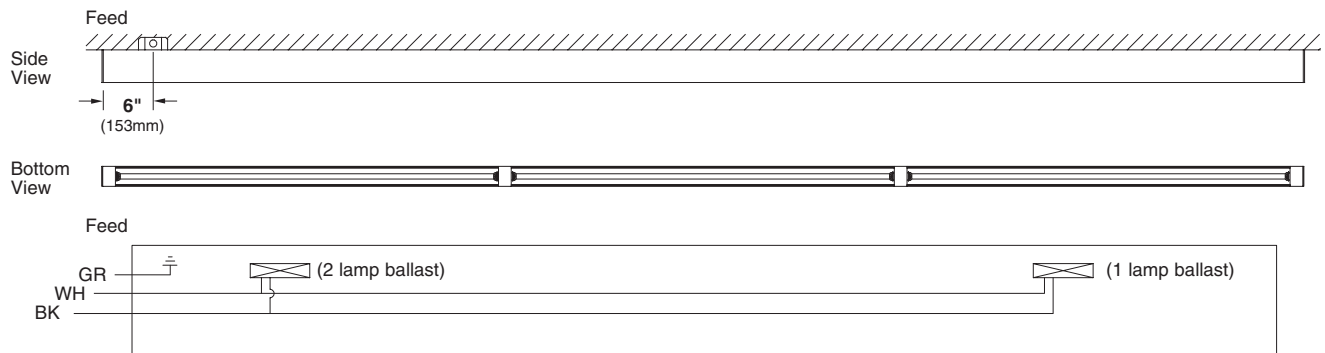


M60 Wiring Options

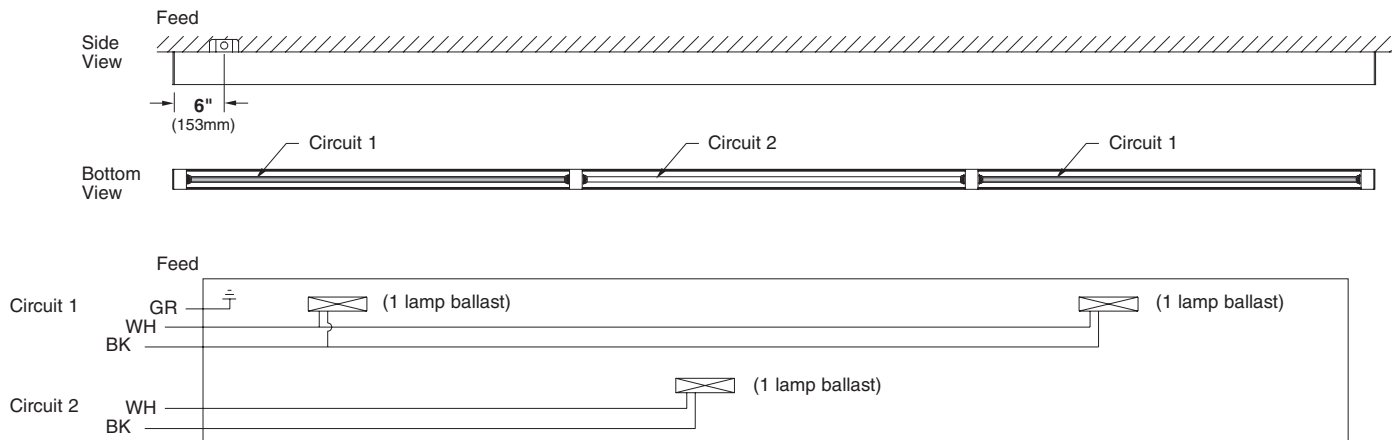


Standard Wiring (1 lamp fixtures)

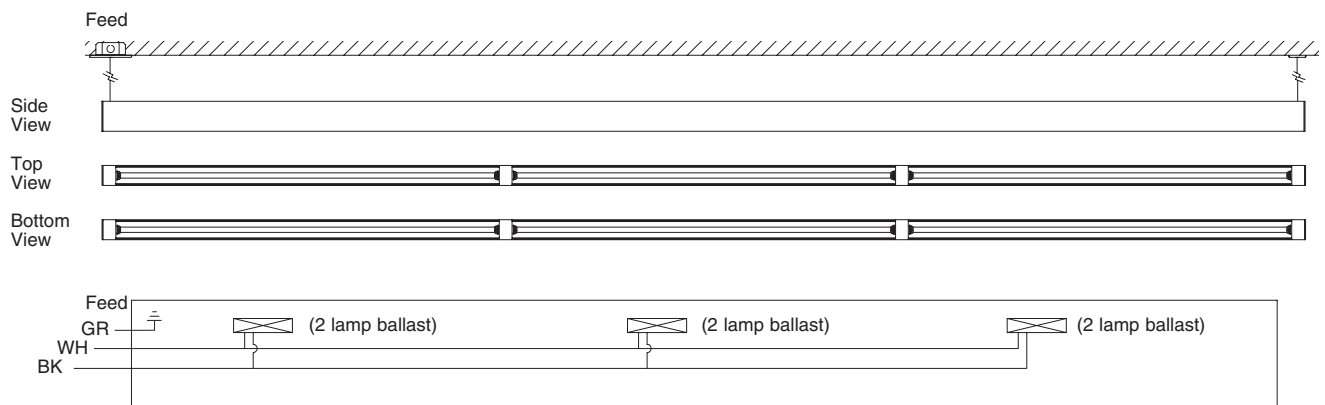


Tandem Wiring (Staggered Circuits / 1 lamp fixtures)

Ordering Code: **TA**



Standard Wiring (2 lamp direct/indirect fixtures)



SELUX Corp. © 2006

TEL: (845) 691-7723

FAX: (845) 691-6749

www.selux.com/usa

M1A-01 (v5.0)

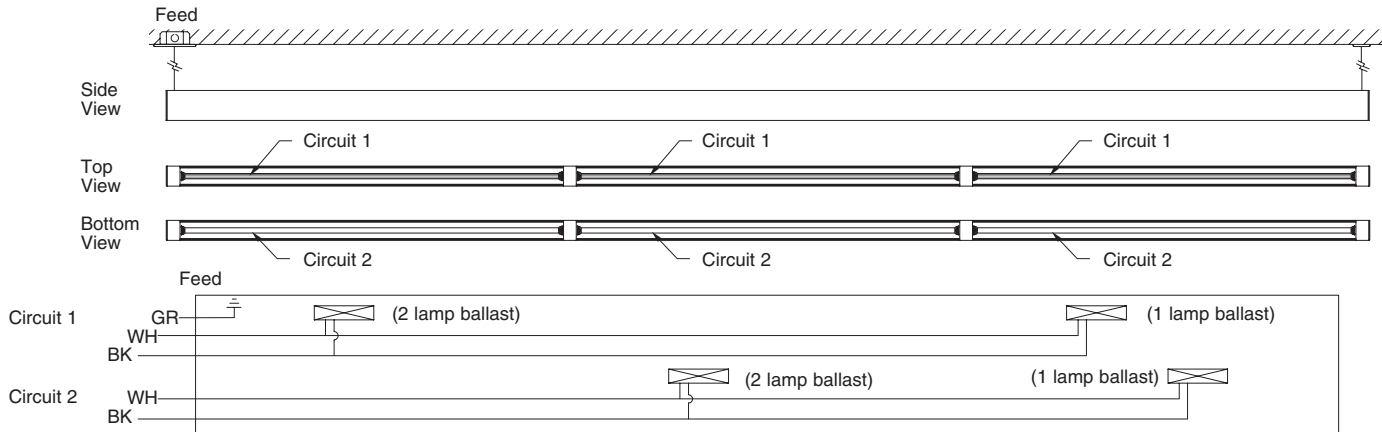


Union Made Affiliated
with **IBEW Local 363**

In a continuing effort to offer the best product possible, we reserve the right to change, without notice, specifications or materials that in our opinion will not alter the function of the product. Specification sheets found at www.selux.com/usa are the most recent versions and supercede all other printed or electronic versions.

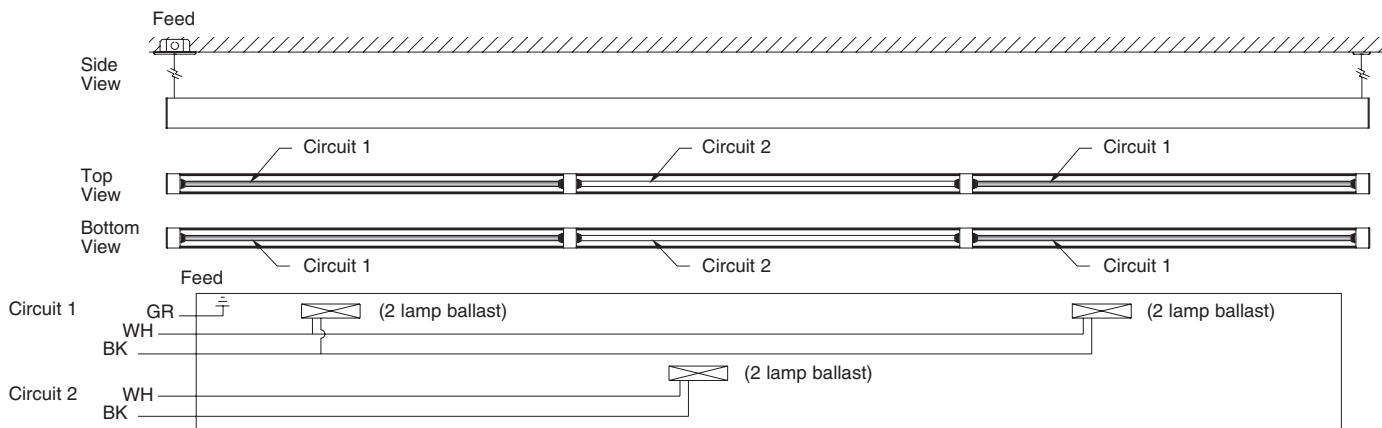
Tandem Wiring (Parallel Circuits - 2 lamp direct/indirect fixtures)

Ordering Code: **TC**



Tandem Wiring (Staggered Circuits - 2 lamp direct/indirect fixtures)

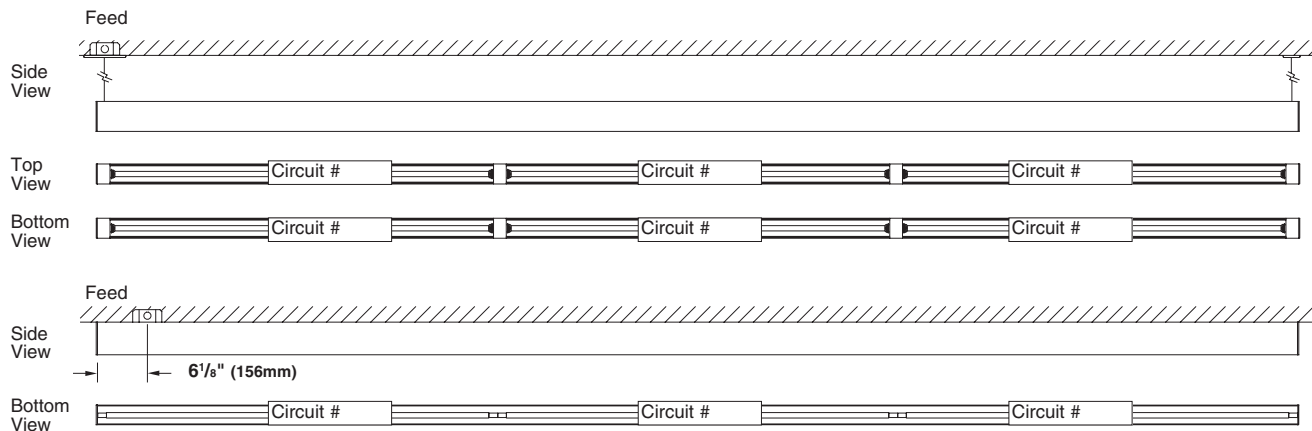
Ordering Code: **TA**



Tandem Wiring (Job Specific Circuitry / 1 or 2 lamp fixtures)

Ordering Code: **TM**

Note: Specify circuits for each lamp.

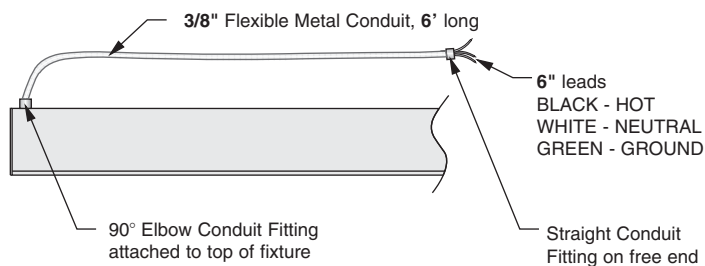


M-Series Flex Whips



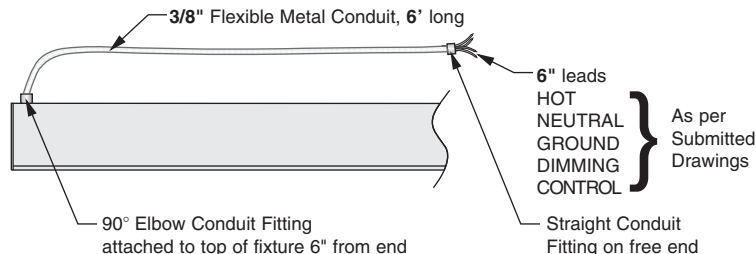
M60 Flex Whip (Standard Wiring) available for Recessed fixtures

Ordering Code: **FW**



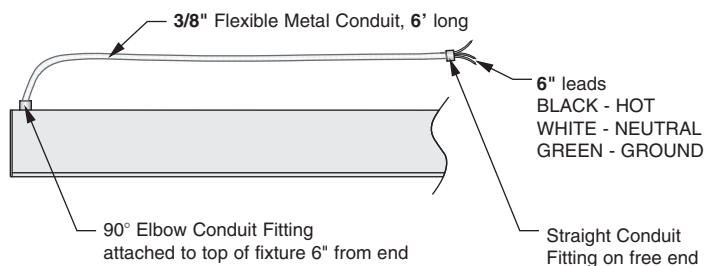
M60 Flex Whip (Dimming Wiring) available for Recessed fixtures

Ordering Code: **FW1**



M100 Flex Whip (Standard Wiring) available for Tannenbaum, Super-Recessed, Recessed and Semi-Recessed fixtures

Ordering Code: **FW**



M100 Flex Whip (Dimming Wiring) available for Tannenbaum, Super Recessed, Recessed and Semi-Recessed fixtures

Ordering Code: **FW1**

