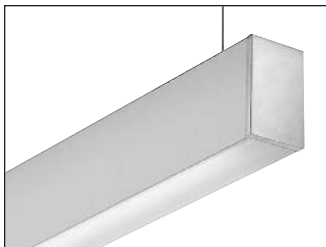


M60

Linear Fluorescent Direct
Surface, Pendant & Wall

se'lux®



Project: _____ **Type:** _____ **Qty:** _____

M60	-	-	-	-	-	-	-
Fixture Series	Lamp Type	Shielding	Mounting	Linear Footage	Finish	Voltage	
-	-	-	-	-	-	-	-

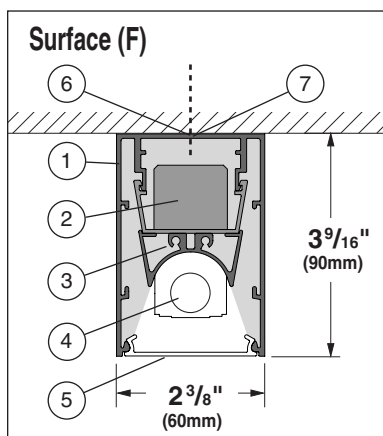
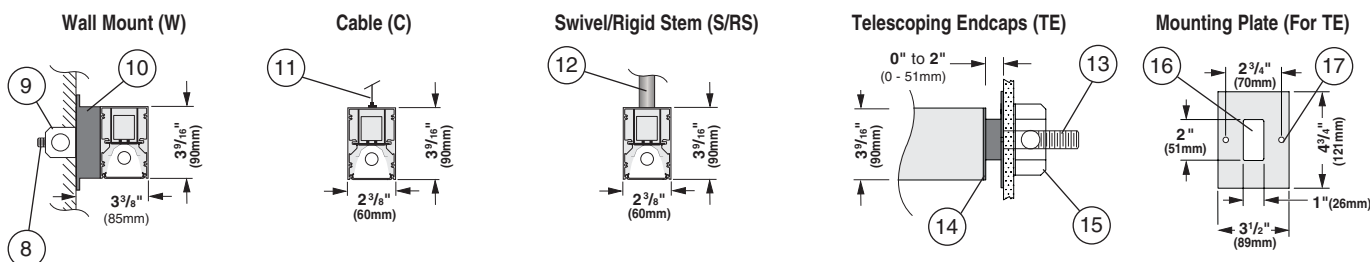
Options (refer to separate data sheets for ordering codes and details)

Fixture Series	Lamp Type	Shielding	Mounting	Linear Footage	Finish	Voltage	Options
M60 M60 Direct Multi-Mount Form	1T5 F28T5	MA Matte Parabolic	F Surface Mount	004 4 foot	WH White	120	(qty.) EM Stand-by Battery Pack ¹ (prefix quantity, i.e. - 5EM)
	1T5HO F54T5HO	MP Silky Specular Parabolic	C Cable	008 8 foot	BK Black	277	DM Dimming ¹ (specify system)
		SD Satine Lens	S Swivel Stem	012 12 foot	SV Silver	347	DMA Digital Addressable Dimming ¹
		OD Extra Diffuse Lens	RS Rigid Stem	For actual lengths see following page. For other lengths, configurations indicate nominal length rounded to the next highest foot. Factory will supply lay-out drawings. Individual fixtures cannot be field joined.	SP Specify RAL#		FS Single Fusing
			W Wall				SI Satine Acrylic Inlay (for MP Louver only)
			TE Telescoping Endcaps				FW Flex Whip (standard)
							FW1 Flex Whip (dimming)
							Track Eutrac Standard ²
							DL Suitable for Damp Locations
							Downlights (See MR11 spec sheet, pp.98)

¹Must be low profile ballasts (1³/₁₆" wide x 1³/₁₆" high); consult factory for details. ²Consult factory for details.

M60 Mounting Diagrams

Scale = 1 : 8



1. Housing - Continuous, 6063-T5 extruded aluminum profile up to 16 feet long.

2. Ballast - Electronic, high power factor, class "P", type "A" sound rating. Specify 120v, 277v, or 347v. Ballast is factory pre-wired with leads to one end of fixture. Consult factory for ballast options.

3. Gear Tray - Die formed tray with specular aluminum reflector. Gear tray installs as complete electrical unit and is held in place with 1/4 turn latches. It is fully accessible from below ceiling.

4. Lamps - As noted (by others). Other lamp lengths or wattages available; consult factory.

5. Shielding - Louvers offer excellent glare control in longitudinal, lateral, and all diagonal planes. High quality aluminum louvers and acrylic shielding allow true freedom of layout for today's modern spaces.

6. Ø 9/32" Mounting Hole - Drilled at factory 6 1/4" from end of fixture and nominally every 24". Mounting hardware supplied and installed by others.

7. Ø 7/8" Feed Hole - Drilled at factory 2 1/4" from end of fixture.

8. Ø 3/8" Threaded Rod - To anchor Wall Bracket, supplied and installed by others.

9. Outlet Box - (2" x 4") Mounted horizontally, supplied and installed by others.

10. Wall Bracket - Aluminum wall bracket provided nominally every 4'. See layout pages for details.

11. 1/16" Aircraft Cable Suspension - Supplied with chrome gripper for easy adjustment. 48" max suspension from ceiling to top of luminaire. (See p.100 for more details.)

12. 5/8" Steel Swivel Stem or Rigid Stem Suspension - Swivel Stem provides 30° swivel rotation and can

be cut in field; Rigid Stem can not be cut in field. 48" max suspension from ceiling to top of luminaire. (See p. 100 for more details.)

13. Ø 1/2" Threaded Rod and Mounting Hardware - To anchor End Cap Support Bracket, supplied and installed by others.

14. End Cap Support Brackets - Welded flush to end of fixture. Supplied with extruded aluminum cover profile. Two lock-down screws on bottom of fixture.

15. Outlet Box - Supplied and installed by others at feed locations.

16. Feed Hole - Centered in wall plate.

17. Ø 3/16" Mounting Holes (2) - Horizontally centered in wall plate.

Interior Luminaire Finish - Standard interior colors are White (WH), Black (BK) and Silver (SV). RAL colors (SP) are available, please specify RAL#.

SELUX Corp. © 2006
TEL: (845) 691-7723
FAX: (845) 691-6749
www.selux.com/usa
M60-01 (v5.0)



Union Made Affiliated
with IBEW Local 363

In a continuing effort to offer the best product possible, we reserve the right to change, without notice, specifications or materials that in our opinion will not alter the function of the product. Specification sheets found at www.selux.com/usa are the most recent versions and supercede all other printed or electronic versions.

M60 Surface / Pendant / Wall Layout Dimensions

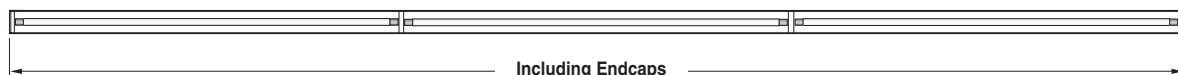
Nominal 4 foot individual - Bottom view



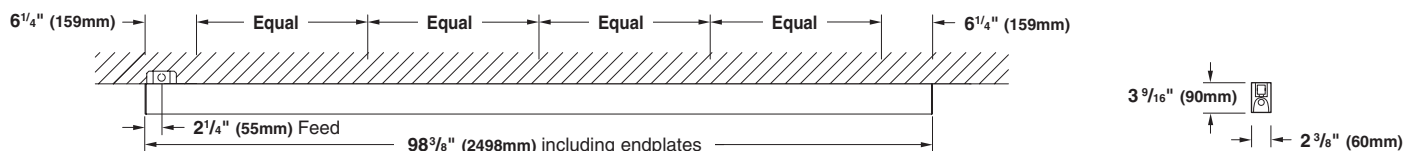
Nominal 8 foot individual - Bottom view



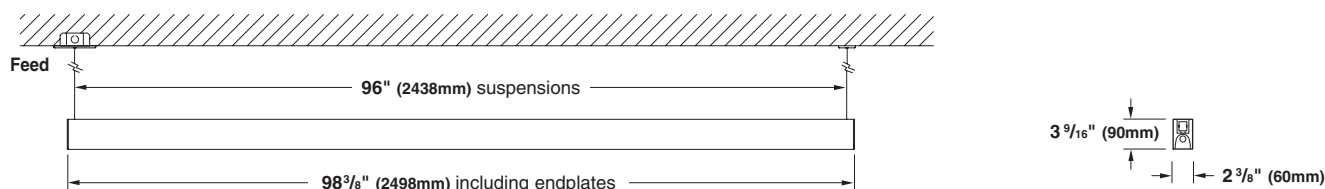
Nominal 12 foot individual - Bottom view



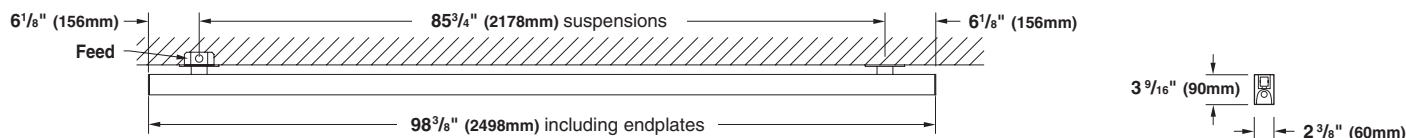
Typical Surface Mount - Side View (Supplied with 7/8 knockout located 2 1/4" from end in top of fixture.)



Typical Pendant Mount - Side View (8' Nominal individual shown)



Typical Wall Mount - Top View (8' Nominal individual shown)



	T5 (1 or 2 lamp)		
	Including Endplates	Pendant Suspensions	Wall Suspensions
4 foot individual	50.34" (1279mm)	48.00" (1219mm)	37.84" (961mm)
8 foot individual	98.34" (2498mm)	96.00" (2438mm)	85.75" (2178mm)
12 foot individual	146.34" (3717mm)	144.00" (3658mm)	133.71" (3396mm)

For other lengths, lamping, continuous runs or configurations please specify overall length (in feet), accessories desired and sketch/drawing of configuration. SELUX will detail project drawings upon order and supply submittal drawings for approval. Individual fixtures cannot be field joined. If you have any questions please contact SELUX customer service or applications engineering for assistance (1-800-SELUX-CS).