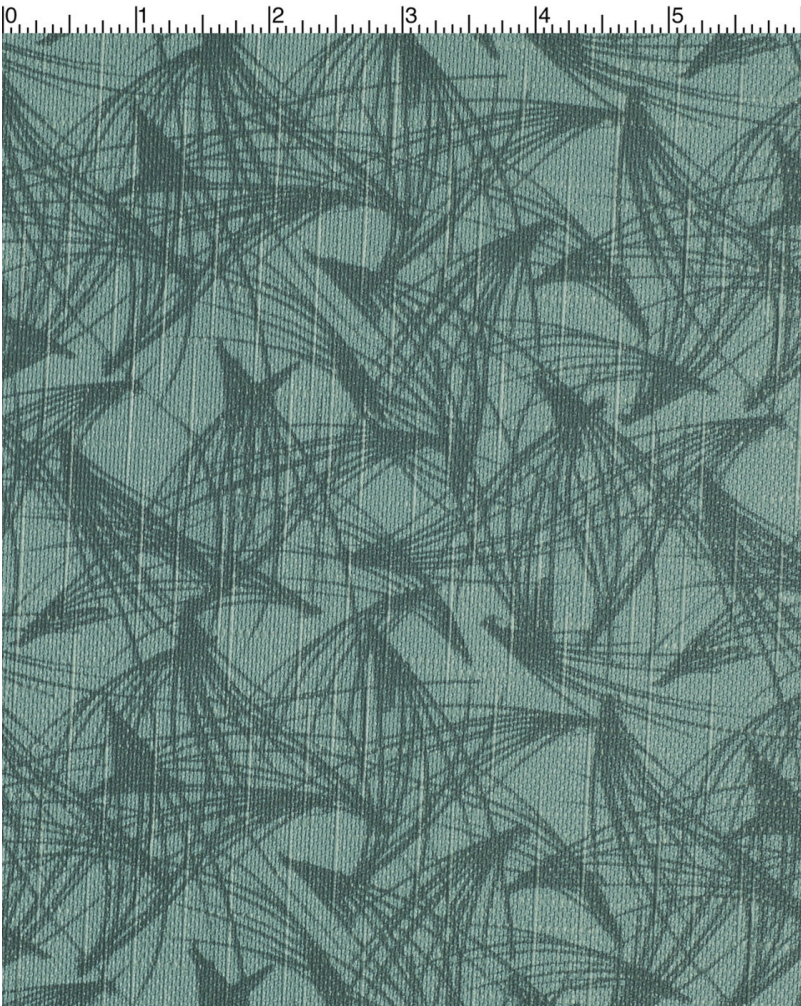


# AQUA PINEHURST

PT-013



**CATEGORY**  
Seating

**PROPERTIES**

**CONTENT**  
100% Vinyl

**BACKING**  
Polyester

**FINISH**  
PVC/Acrylic

**WIDTH** 54" **WEIGHT** 32.25 oz./linear yard **DIR** Yes **SHOWN RR** No

**VISUAL REPEAT** 4.88" H, 4.5" V **ROLL LENGTH** 30 yards

**BREAKING STRENGTH**  
Warp 109/Fill 80

**ABRASION RESISTANCE**  
Exceeds 500,000 Double Rubs

**PILLING RESISTANCE**

**COLORFASTNESS TO CROCKING**  
Dry: Class n/a /Wet: Class N/A

**COLORFASTNESS TO LIGHT**  
150 hours

**CLEANING**  
W: Water-Based Cleaner - Spot clean, using the foam only from a water-based cleaning agent, such as a mild detergent or non-solvent upholstery shampoo product. Apply foam with a soft brush in a circular motion. Always rinse promptly with clean water. Vacuum when dry. Pretest a small area before proceeding. In general, most common stains can be cleaned using warm, soapy water and clear water rinses. Moderate scrubbing with a medium bristle brush will help loosen soiling materials from the depressions of embossed surfaces.

**FLAMMABILITY**  
Passes Cal 117 Section E; NFPA 260 (Equiv. to UFAC) Class 1; FAA/FAR 25.853(a) & Appendix F Part I(a)(ii); Fed. Spec. CID A-A-2950/supercedes CCC-A-680A; FMVSS 302; NY & NJ Port Authority; Fed. Spec. CCC-A-700J; Fed. Std. 191A Test Method 5903.1; Fed. Spec. CCC-A-700J; Fed. Std. 191A Test Method 5903.1. May comply with Cal. Tech. Bul. 133 when combined with appropriate components.

Notes:

---

---

---

---

---

---

---

---

---

---

**MorCare™**  
NOW MORE THAN EVER

GS-28F-0022P

321 South Alabama Street, Indianapolis, IN 46204 T: 317.267.2626 F: 317.267.2629 Since 1897