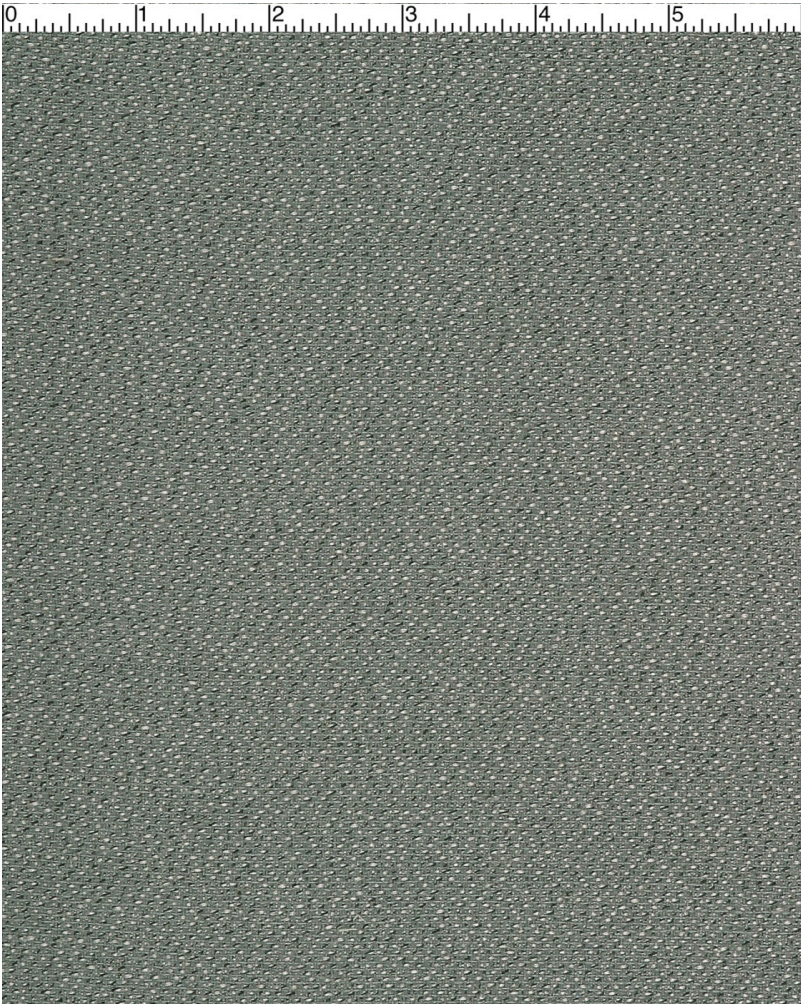


TWILIGHT UNIVERSE

1618



CATEGORY
Panel

PROPERTIES

CONTENT
56% Polyester, 44% Recycled Polyester

BACKING
None

FINISH
None

WIDTH 66" **WEIGHT** 16 oz./linear yard **DIR** Yes **SHOWN RR** No

VISUAL REPEAT None **ROLL LENGTH** N/A

BREAKING STRENGTH
Warp 350/Fill 250

ABRASION RESISTANCE
Exceeds 60,000 Double Rubs

PILLING RESISTANCE

COLORFASTNESS TO CROCKING
Dry: Class 4/Wet: Class 4

COLORFASTNESS TO LIGHT
40 hours

CLEANING
WS: Water/Solvent Cleaner - Spot clean with a mild solvent, an upholstery shampoo, or the foam from a mild detergent. When using a solvent or dry cleaning product, follow instructions carefully and clean only in a well-ventilated room. Avoid any product that contains carbon tetrachloride or other toxic materials. With either method, pretest a small area before proceeding. Always rinse promptly with clean water.

FLAMMABILITY
Passes Cal 117 Section E; ASTM E84 Class 1 or A. May comply with Cal. Tech. Bul. 133 when combined with appropriate components.

Notes:

GREENGUARD
GOLD Certified

321 South Alabama Street, Indianapolis, IN 46204 T: 317.267.2626 F: 317.267.2629 Since 1897