

Kids Glass™

S
D | Skyline Design

Designers

To Noël Ashby, surfaces are more than two-dimensional experiences. Much of her work is inspired by the physical materials themselves, the weight of line against form, and the power of words to direct creative solutions.

Mark Cook and Brian Edlefson founded Thesis, a graphic design studio. Their collective experience and collaborations with architects and interior designers have been instrumental in developing branding solutions and directing design initiatives.

Deborah Newmark's art background informs her role as Skyline's Creative Director. Influenced and inspired by art, performance and mixed media, she enjoys the creative collaboration that results in the creation and evolution of the company's products and presence.



Technique

Vitracolor®
AST™ I, AST III
Eco-etch®

Glass

Low-iron PPG Starphire® tempered safety glass

Sizes

Standard sizes up to 72" x 144"

Thickness

1/4", 3/8", 1/2", 3/4"

Customization

Available

Accolades

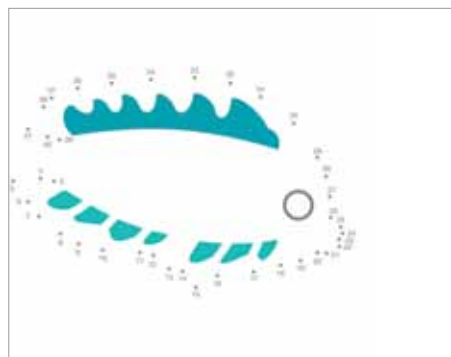
Best of NeoCon Gold, 2010



Animals™



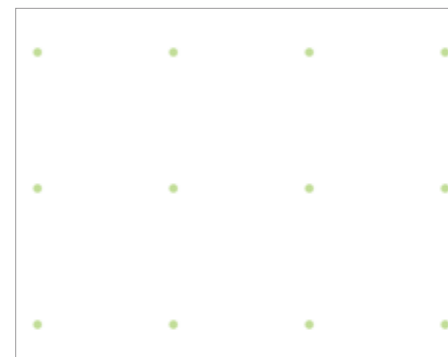
Caterpillar Jumble™



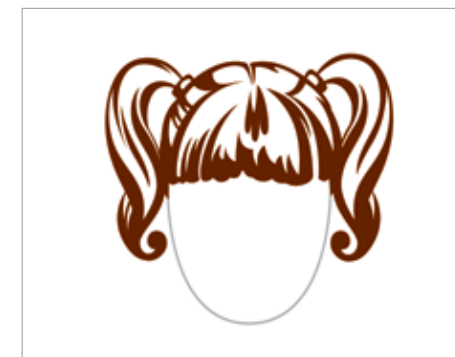
Connect the Seascape™



Flowers on Parade™



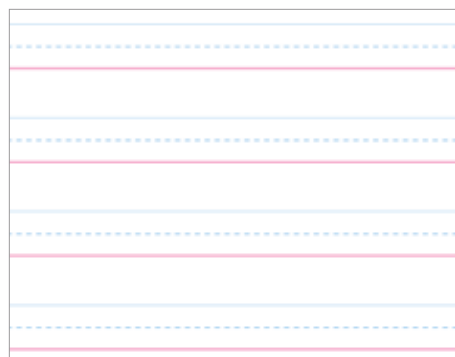
Game Grid™



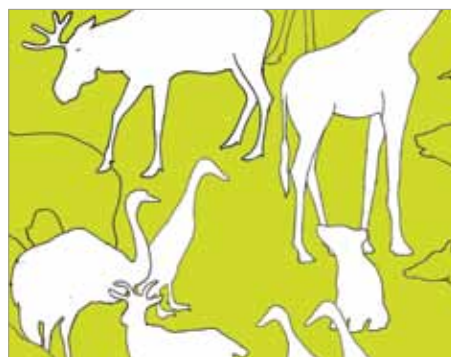
Hair™

Shown: 10" wide crops

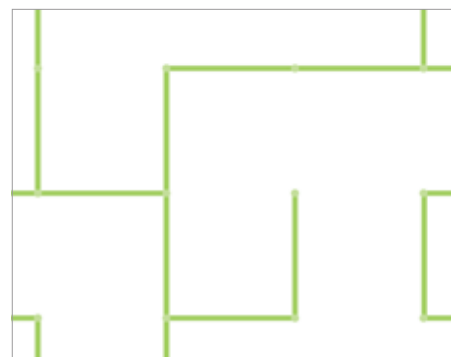
All patterns available in
Vitracolor



Handwriting™



Mammals Roam™



Maze™



Mustache™



Urchin™

Kids Glass

A collaboration among Noël Ashby, Thesis, and Skyline Design's Creative Director, Deborah Newmark. The whimsical collection features 11 patterns with fun and engaging graphics for children and adults, combining color and imagination to address the need for positive distraction in children's healthcare, education, library, corporate day care, and museum environments. Can be used for walls, signage, furniture, and marker boards. And, it can be used with any marker—no staining or ghosting occurs—so it's easy to clean and maintain. A perfect complement to Skyline's Greenplay® children's furniture.