



Modular Architectural Interiors

Panel Fabrics – Grade 3 and 4

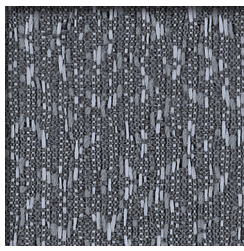
True Textiles

Mingle, Crosstown, Hopscotch, Groove, Lily Pad, Tempest, Drift, Nitro



Mingle 2527

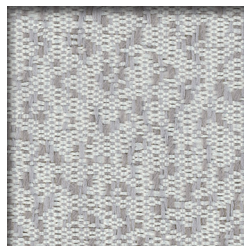
Grade 3 (Fabric shown railroaded)



010 Carbon



030 Straw



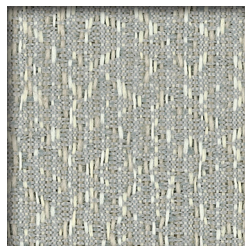
060 Crystal



020 Khaki



090 Biscuit



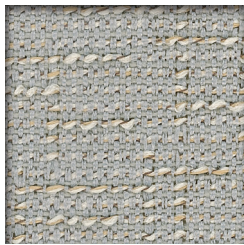
070 Winter



050 Rapids

Crosstown 2526

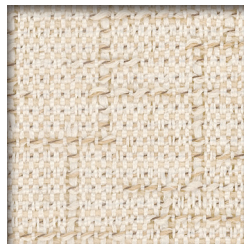
Grade 3



060 Fieldstone



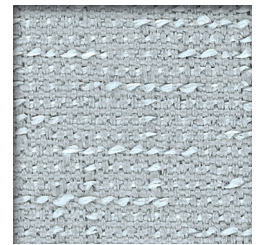
080 Buff



030 Ray



010 Cement



061 Sterling



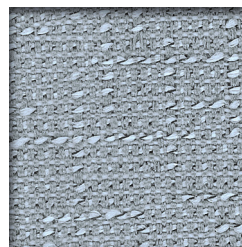
070 Stucco



050 Chamois



020 Mystic

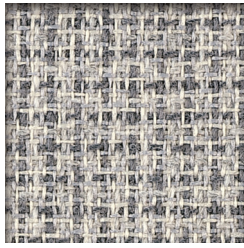


040 Waterfront

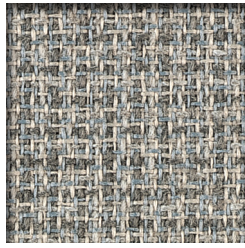


Hopscotch 2823

Grade 3



026 Granite



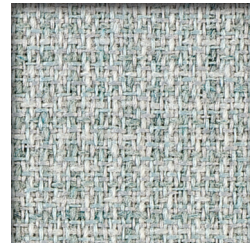
021 Field Stone



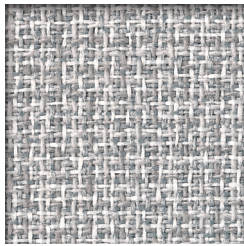
010 Chess



028 Leaf



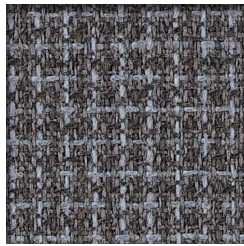
022 Soft Blue



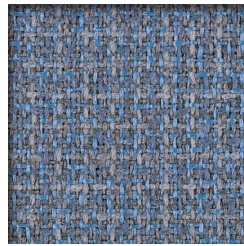
014 Tictactoe



025 Putty



020 Midnight



017 Marbles

Groove 3497

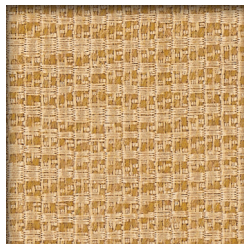
Grade 4 (Fabric shown railroaded)



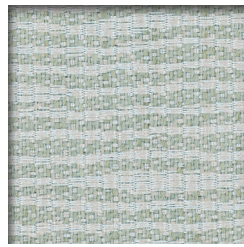
022 Winter



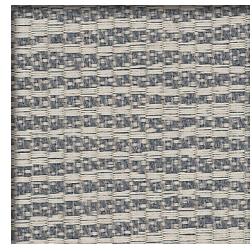
020 Froth



031 Marigold



060 Mist



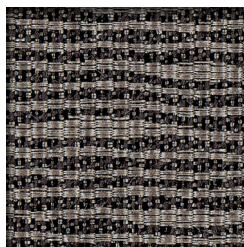
024 Smoke



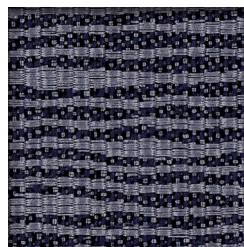
040 Mocha



030 Rum



010 Graphite

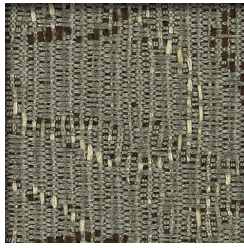


050 Starlight



Lily Pad 2318

Grade 4 (Fabric shown railroaded)



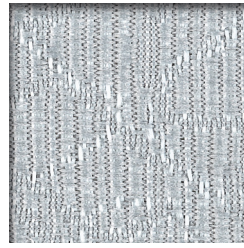
060 Cement



040 Custard



020 Latte



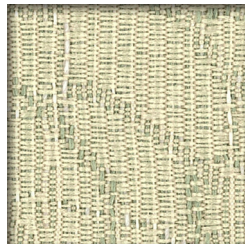
090 Platinum



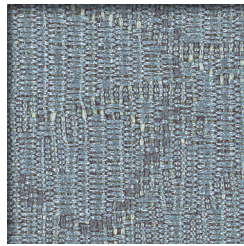
041 Dew



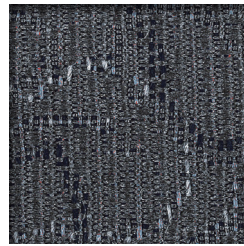
051 Squash



050 Aloe



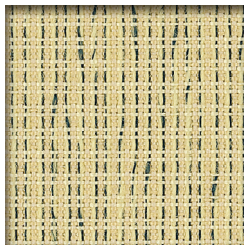
080 Carbon



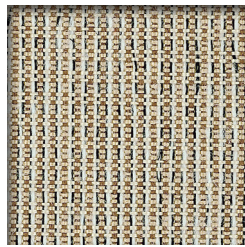
070 Ink

Tempest 2120

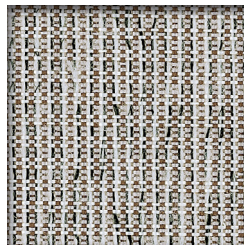
Grade 4 (Fabric shown railroaded)



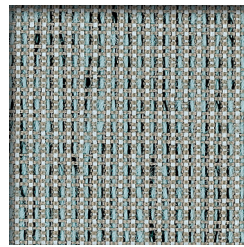
040 Sandstorm



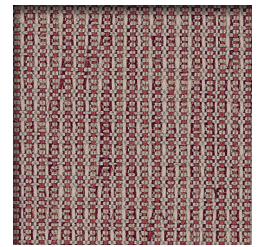
041 Gold Rush



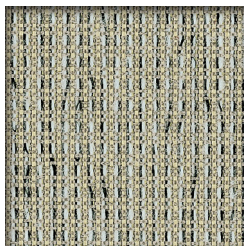
012 Full Stream



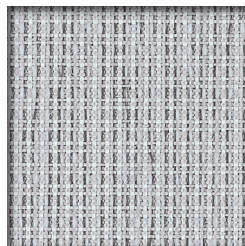
021 Undercurrent



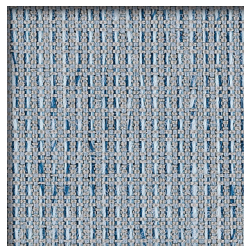
022 Auburn



020 Dragonfly



031 Frost



023 Starlight



042 Ginger

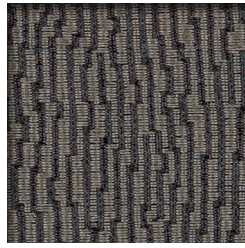


Drift 2539

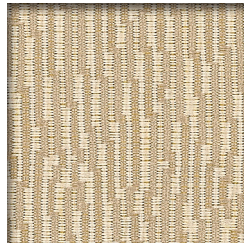
Grade 4 (Fabric shown railroaded)



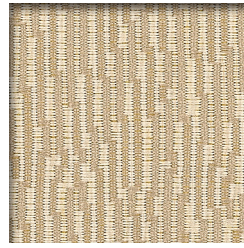
040 Graphite



041 Storm



020 Alabaster



032 Mocha



011 Dusty Miller



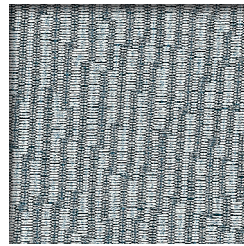
010 Pebble



031 Chamois



030 Sprout



050 Slate

Nitro 2317

Grade 4 (Fabric shown railroaded)



040 Rootbeer



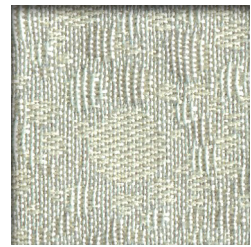
042 Cream Soda



032 Ale



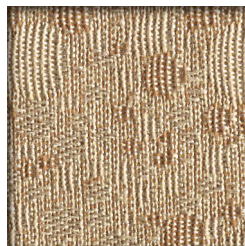
041 Gingerale



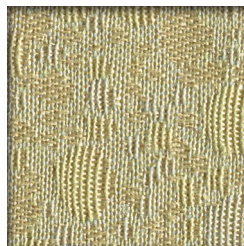
043 Crystal



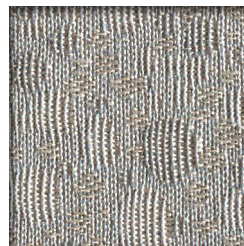
010 Tonic



021 Cherry Cola



030 Lemon Lime



020 Spritzer

Specifications

Style #	66" Wide Pattern	Content	Directionality	Approximate Repeat	Lightfastness Min. (AATCC 16 Option 3) (Formerly AATCC 16E)	Crocking Min. (AATCC 8)
2527	Mingle	100% Recycled Polyester	Directional	16.7" Vertical 16.2" Horizontal	40 hrs.	Class 4 min. - dry Class 3 min. - wet
2526	Crosstown	100% Recycled Polyester	Directional	12.5" Vertical 16.2" Horizontal	40 hrs.	Class 4 min. - dry Class 3 min. - wet
2823	Hopscotch	100% Recycled Polyester	Directional	None	40 hrs.	Class 4 min. - dry Class 3 min. - wet
3497	Groove	100% Recycled Polyester	Directional	20" Vertical 16-3/4" Horizontal	40 hrs.	Class 4 min. - dry Class 3 min. - wet
2318	Lily Pad	100% Recycled Polyester	Directional	16.7" Vertical 16.2" Horizontal	40 hrs.	Class 4 min. - dry Class 3 min. - wet
2120	Tempest	100% Recycled Polyester	Directional	None	40 hrs.	Class 4 min. - dry Class 3 min. - wet
2539	Drift	100% Recycled Polyester	Directional	9.6" Vertical 14" Horizontal	40 hrs.	Class 4 min. - dry Class 3 min. - wet
2317	Nitro	100% Recycled Polyester	Directional	16.7" Vertical 9.1" Horizontal	40 hrs.	Class 4 min. - dry Class 3 min. - wet

Cleaning Code

W-S Fabrics may be cleaned with mild, water-free solvents or water-based cleaning agents or foam.

Flammability

ASTM E-84: Class 1 or A

Colors may vary slightly between dye lots.

Application testing of these products is recommended.



Terratex® is a registered trademark of True Textiles, Inc., and designates fabrics that are made from 100% recycled or compostable material using increasingly sustainable manufacturing practices to produce a high quality product that is recyclable at the end of its useful life.



100% of the electricity used to make this product is matched by Green-E certified renewable energy certificates (www.green-e.org).



These fabrics are included in the Underwriters Laboratory panel fabric recognition program. Additional testing of this U.L. recognized component fabric is not required on approved panels from participating manufacturers.

330 Waterloo Valley Road
Mount Olive, NJ 07828
973-446-2300
www.maispace.com



Modular Architectural Interiors