



Modular Architectural Interiors

Panel Fabrics – Grade 1, 2 and 3

MAI Select

Impressions, Rainstorm, Swirl, Flare, Immersion, Shimmer

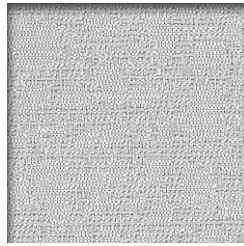
Impressions Grade 1



101 Honey



102 Khaki



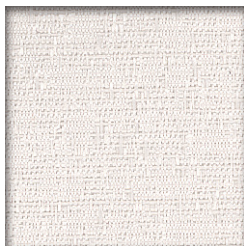
103 Lichen



104 Ocean



105 Sand



106 Smoke



107 Vapor

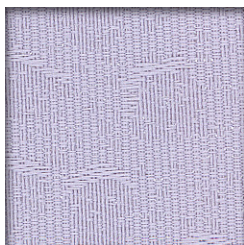


108 Carbon

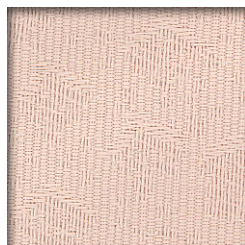


109 Darkness

Rainstorm Grade 1



201 Azure



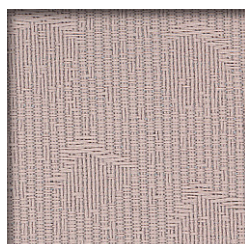
202 Cornsilk



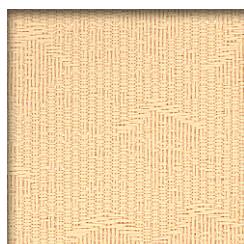
203 Moss



204 Quartz

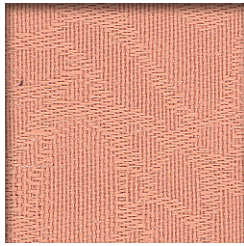


205 Steel



206 Wheat

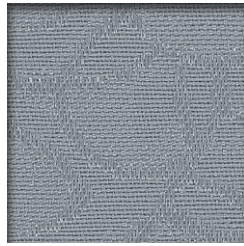
Swirl Grade 1



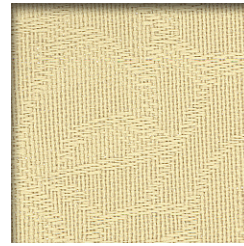
301 Cinnamon



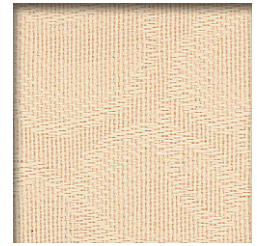
302 Cream



303 Gunmetal



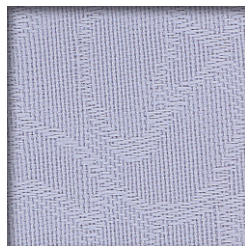
304 Lime



305 Sandstone



306 Silver



307 Sky

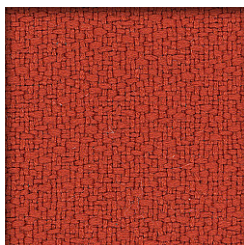


308 Soapstone

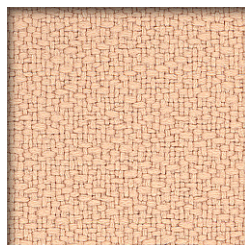


309 Willow

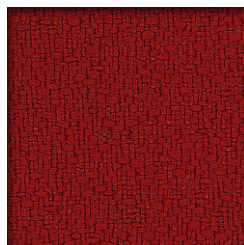
Flare Grade 2



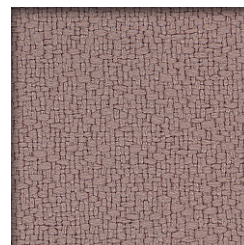
101 Blood Orange



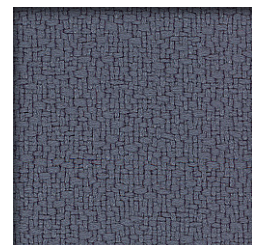
402 Butter



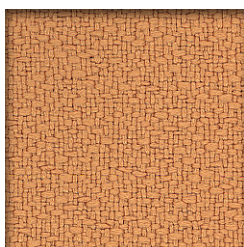
403 Crimson



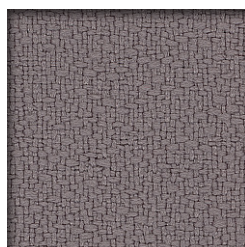
404 Graphite



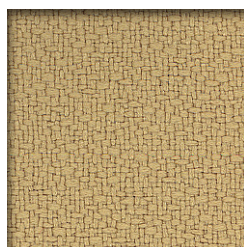
405 Loadstone



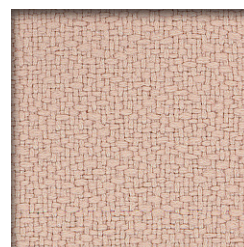
406 Marigold



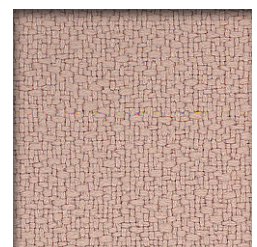
407 Meteor



408 Olive

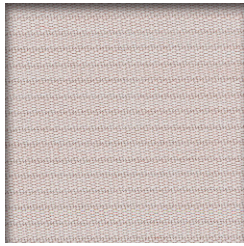


409 Pearl

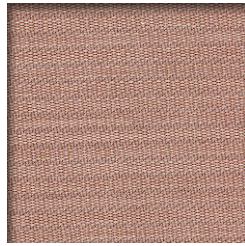


410 Shale

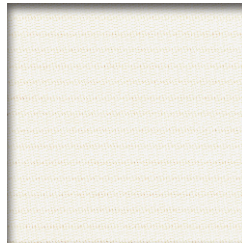
Immersion Grade 3



501 Ash



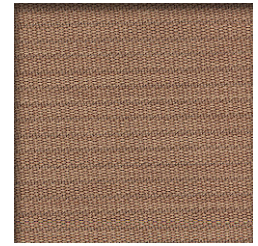
502 Buff



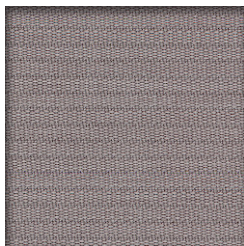
503 Chamois



504 Espresso



505 Flax



506 Flint



507 Mandalay

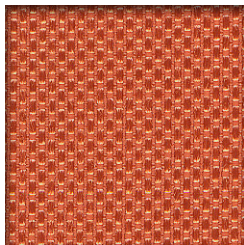


508 Sycamore

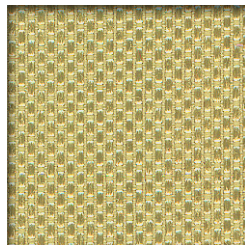


509 Tuscany

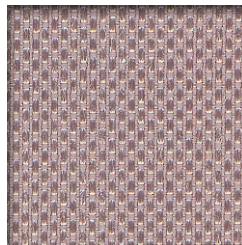
Shimmer Grade 3



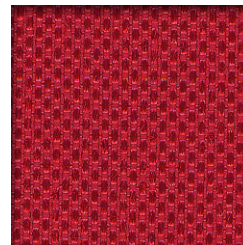
601 Apricot



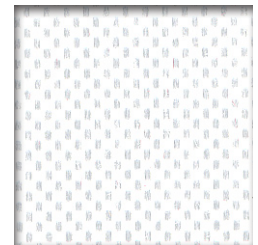
602 Lima



603 Pablo



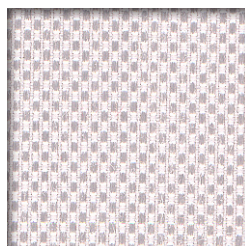
604 Pomegranate



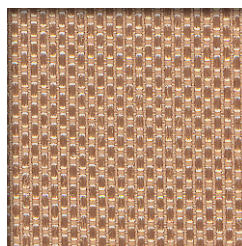
605 Porcelain



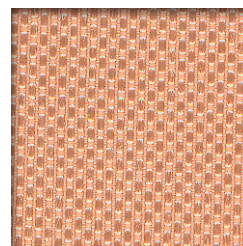
606 Tiara



607 Tide



608 Tussock



609 Twine

Specifications

Pattern	Content	Width	Weight	Flammability
Impressions	100% Polyester	64"	10.3 ± 0.5 oz / lin. yd.	ASTM E-84 Class 1 or A State of California Tech Bulletin 117 Sec. E (CS-191-53) Passes
Rainstorm	100% Polyester	64"	10.3 ± 0.5 oz / lin. yd.	ASTM E-84 Class 1 or A State of California Tech Bulletin 117 Sec. E (CS-191-53) Passes
Swirl	100% Polyester	64"	10.3 ± 0.5 oz / lin. yd.	ASTM E-84 Class 1 or A State of California Tech Bulletin 117 Sec. E (CS-191-53) Passes
Flare	100% Polyester	64"	14.0 ± 0.5 oz / lin. yd.	ASTM E-84 Class 1 or A State of California Tech Bulletin 117 Sec. E (CS-191-53) Passes
Immersion	100% Polyester	64"	10.58 ± 0.5 oz / lin. yd.	ASTM E-84 Class 1 or A State of California Tech Bulletin 117 Sec. E (CS-191-53) Passes
Shimmer	100% Polyester	64"	11.99 ± 0.5 oz / lin. yd.	ASTM E-84 Class 1 or A State of California Tech Bulletin 117 Sec. E (CS-191-53) Passes

Colors may vary slightly between dye lots.



Modular Architectural Interiors

330 Waterloo Valley Road
Mount Olive, NJ 07828
973-446-2300
www.maispace.com