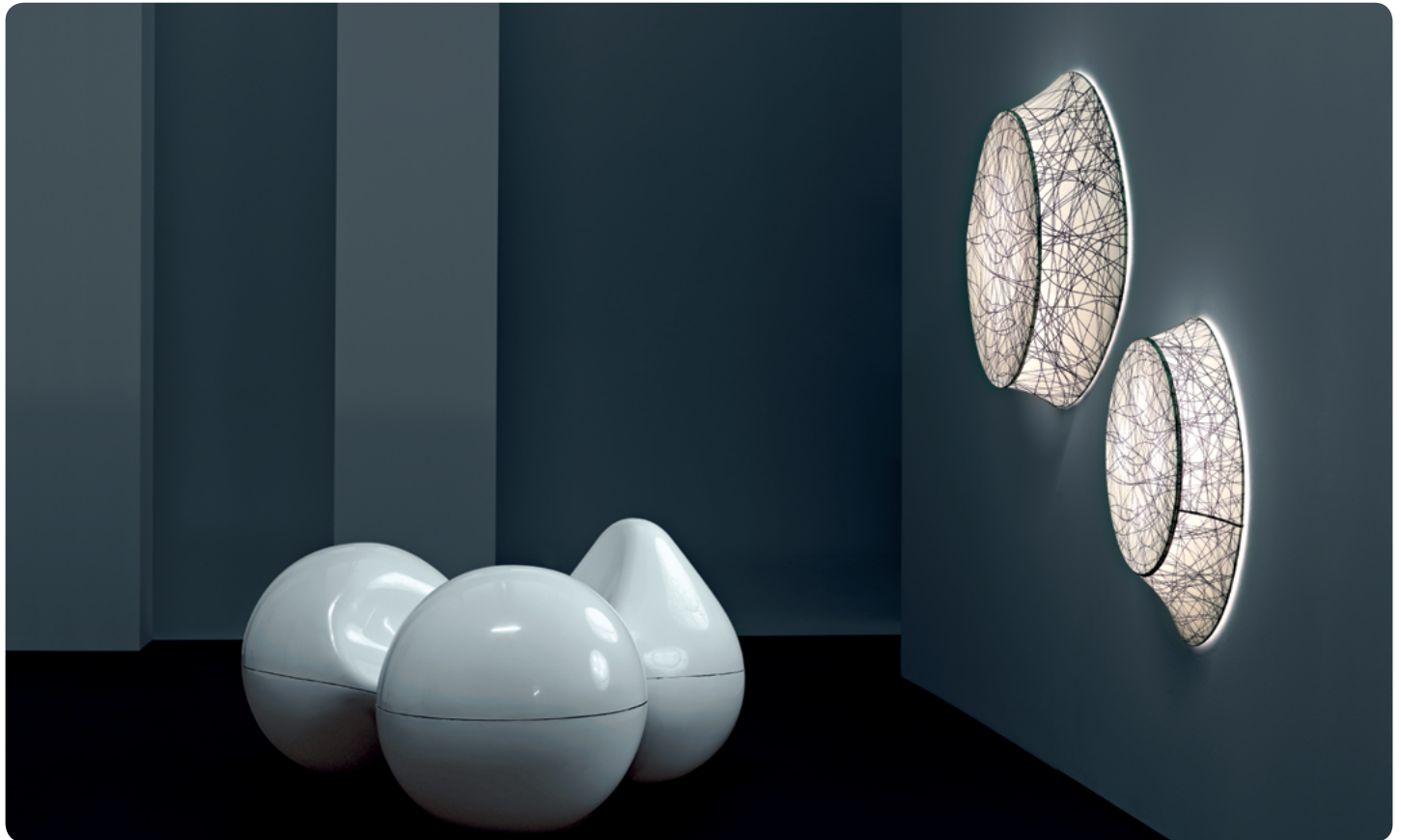


Wagashi, wall

design Luca Nichetto
and Massimo Gardone
2007

FOSCARINI



Poetry and functionality are the characterising values of Wagashi, the fruit of a synthesis between two different creative sensitivities to design development: the unusual shape developed by the designer Luca Nichetto is completed by the hands of the photography artist Massimo Gardone.

Wagashi is a wall and ceiling lamp made up of a metal structure covered in printed fabric, shaped to perfectly fit the skeleton. The fabric as a diffuser element allows to "dress" Wagashi with different decorations: from the flowery

images in three different colour versions to a more rational pattern, called "wires" as it reminds a closely-woven web of metal threads. Available in three different sizes, Wagashi is perfect for furnishing and giving character to a wall or a ceiling, where an excellent lighting performance is required.

Wagashi, wall technical info

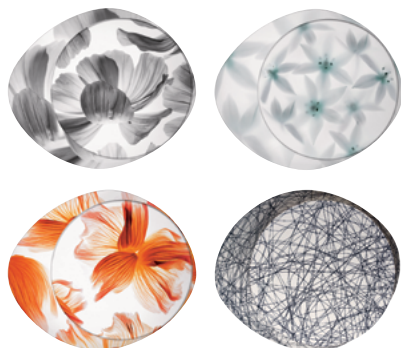
FOSCARINI

Description

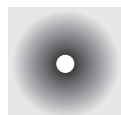
Wall/ceiling lamp with diffused light. Washable fabric diffuser with double stitching, conformed to adapt to the frame. The decoration is printed onto the fabric using a "sublimation" process, a printing process which prints the image permanently onto the fabric, guaranteeing excellent photographic rendering. Epoxy powder coated metal frame and mount. Electronic ballast for the fluorescent versions.

Materials: fabric and metal

Colours: black, white, orange, wires

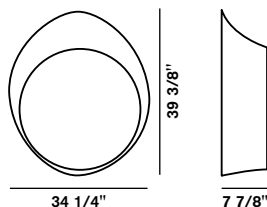


Brightness
diffused light



Model

Wagashi large



Weight

net lbs 16,78
gross lbs 20,64

Packing

vol. cub. ft. 9,500
n.bboxes: 2

Bulbs

– incandescent 4x40W E26 medium type A19



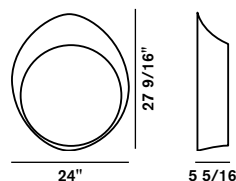
– fluorescent 1x40W 2GX13
type circline T5 electronic ballast



Certifications



Wagashi medium



Weight

net lbs 10,15
gross lbs 13,58

Packing

vol. cub. ft. 4,393
n.bboxes: 2

Bulbs

– incandescent 4x25W E12
candelabra type G16,5



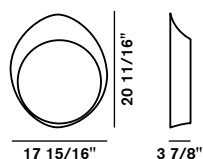
– fluorescent 1x40W 2GX13
type circline T5 electronic ballast



Certifications



Wagashi small



Weight

net lbs 6,40
gross lbs 8,72

Packing

vol. cub. ft. 3,714
n.bboxes: 2

Bulbs

– incandescent 3x25W E12
candelabra type G16,5



– fluorescent 1x22W 2GX13 type circline T5
electronic ballast

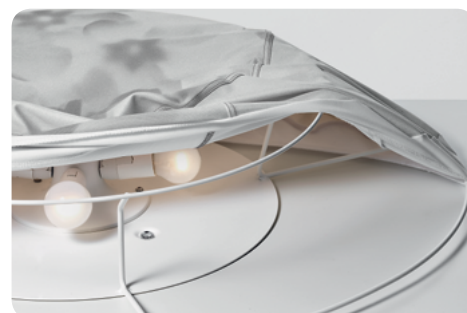


Certifications



2D/3D drawings
photometric info
assembly instructions

area download



Wagashi, wall designer+collection

FOSCARINI

Luca Nichetto

Born in Venice where he graduated in Industrial Design. In 2006 he founded his studio, Nichetto&Partners, that deals with Design Consultant as well as Industrial Design. He held workshops in different universities in Italy and abroad and he takes part to exhibition in Europe, United States and Japan.

Massimo Gardone

Music, photography and video have always intersected in the work of Massimo Gardone, following and guiding him in his projects. In creating Azimut Studio, he has collaborated with the foremost Italian graphic designers and contributed to the communication of prestigious trademarks. In the course of time he has approached different artistic experiences, including the creation of design objects. Today, Gardone would like to remain focused on the interior poetics, intent on seeing himself positioning images in the world, staying at home, connected, inventing them...

Go to concept site for Wagashi:
www.foscarini.com/wagashi



Wagashi Collection

