

# SET LB3 CLASSIC

## Countertop basin / cutable

### 81068.6



#### TECHNICAL DATA

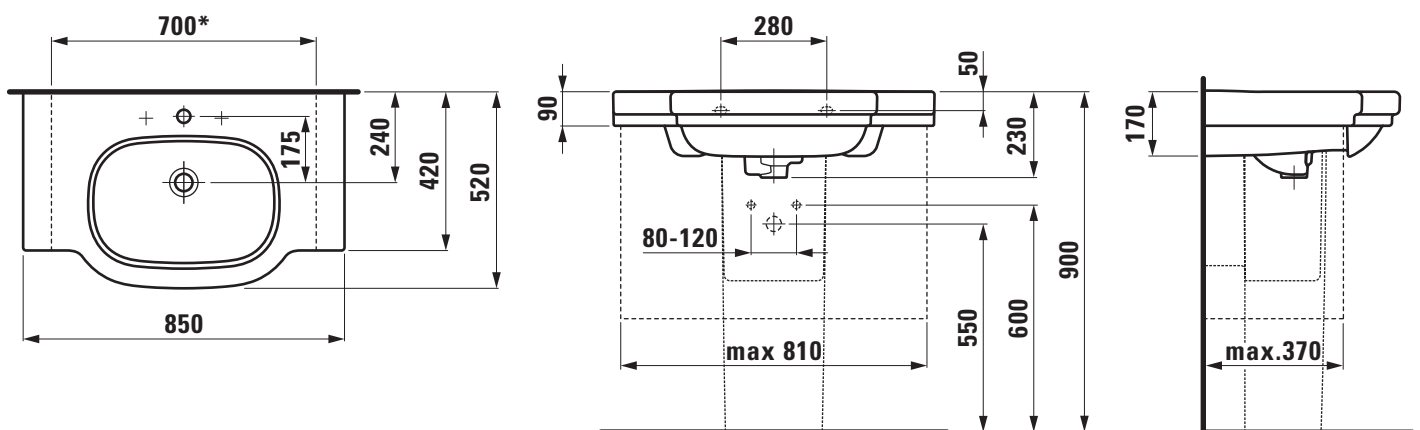
Order no.	81068.6
Certified to	EN 31
Dimensions	850 x 520 mm
Inside dimensions of the basin	480 x 325 mm
Specification	Always to be fixed to the wall. Cuttable to 700 mm, with 2 side cover to 730 mm Charge 104 – 1 centre tap hole
Special specification	Charge 108 – 3 tap holes Charge 109 – without tap holes Charge 136 – 3 tap holes, distance 8 inches
Weight	23,0 kg
Accessories excl.	Siphon cover, order no. 81968.1 Pedestal, order no. 81968.0 Side cover for cut surface left, order no. 87868.1 right, order no. 87868.2

Mounting acc. incl.	with concealed ceramic waste and overflow, chrome-plated vertical cover, order no. 89097.8
Mounting acc. excl.	Mounting set M10 x 140 mm, order no. 89988.2
Otherwise	When ordering the cut version use the order form for cutting
Colours	see colour table

#### SPECIFICATION TEXT

Cutable countertop basin Laufen-LB3 CLASSIC, sanitary ceramic EN 31, dimensions 850 x 520 mm, symmetric, 1 centre tap hole, concealed ceramic waste and overflow, chrome-plated vertical cover  
Special feature: cuttable to 700 mm, integrated shelves  
Further options / accessories: Surface refinement LCC (only white), 3 tap holes, without tap holes, 3 tap holes distance 8 inches, siphon cover, pedestal, side cover, bathtubs, shower trays, furniture, accessories  
Order no. 81068.6

#### TECHNICAL DRAWINGS / S 1 : 20



\* = minimum measure for cutting