

# STOP!

**Do not install until you have read these instructions**  
**Call 800.465.6909 with any questions**

## **HANDLING AND INSTALLATION INSTRUCTIONS**

**Slink™ Hand-Painted Vinyl**  
**(MR-RV-7 series)**

**Rolls may be graded for optimal installation. Start installing with Roll #1.**  
**You must still grade for color flow within your installation.**

### **QUICK FACTS**

- Paste: Maya Romanoff's MR-RA-888-1 or MR-RA-888-5 or a good quality clear, strippable, pre-mixed, vinyl adhesive.
- Table-trim.
- Double-cut on the wall. See diagram on page 2 for layout.
- Pattern repeat 34.5" x 34.5".
- Relax 5-8 minutes.
- Please read the following installation instructions before proceeding.
- **IF YOU DO NOT FOLLOW OUR INSTALLATION INSTRUCTIONS, MAYA ROMANOFF WILL NOT ACCEPT RESPONSIBILITY FOR THE INSTALLATION—YOU WILL BE INSTALLING AT YOUR OWN RISK.**

### **GENERAL GUIDELINES**

- Inspect goods carefully. No returns on cut goods. Grade carefully for color flow.
- Confirm that you have the correct yardage and color of product before installing. Additional yardage from this dye lot may not be available.
- **No allowances will be made after THREE (3) drops—Call 800.465.6909 immediately if you encounter any difficulties.**
- No claims allowed for labor charges or consequential damages under any conditions.
- Wallcoverings can display certain irregularities that are inherent to the manufacturing process.
- Walls should be mirror-smooth. Lining paper should be used if walls have imperfections.
- See diagram on page 2 for side match.

### **ACTIONS TO AVOID**

- Do not rub face of the product with a stiff brush.
- Do not crease wallcovering.
- Do not pull panels once they have been placed on the wall: this will cause the seams to open after the product dries.
- Do not use a seam roller to set the seams. Instead, use a plastic sweep.
- Avoid soaking the paper in water or getting the wallcovering excessively wet. This can cause shrinkage and opening of seams as the wallcovering dries.
- Avoid direct or bright reflected sunlight. Not guaranteed against fading or color change.

10/25/11

CONTINUED



**MAYA ROMANOFF**

Chicago Headquarters: 3435 Madison, Skokie, IL 60076 t 1.773.465.6909 f 1.773.465.7089 www.mayaromanoff.com

# STOP!

**Do not install until you have read these instructions**  
**Call 800.465.6909 with any questions**

## **HANDLING AND INSTALLATION INSTRUCTIONS**

### **Slink™ Hand-Painted Vinyl (MR-RV-7 series)**

#### **WALL PREPARATION**

- Paint the wall the color of the product with a good quality, non-sealing flat latex wallpaint.
- Do not install on sealed walls without hanging lining paper.
- Walls must be completely dry before installation can begin.

#### **ADHESIVE**

- Use Maya Romanoff's MR-RA-888-1 or MR-RA-888-5 or a good quality CLEAR, STRIPPABLE, PRE-MIXED, VINYL adhesive\*.
- Apply evenly and adequately. Along the edges, apply paste thicker to avoid seams opening. Low water content is important to trouble-free installations.
- DO NOT fold after pasting, creases may be difficult to smooth out.

#### **RELAXING TIME**

- It is essential to allow wallcoverings sufficient relaxing time to avoid Bubbling, Shrinking and Seam Opening. Allow the paste enough time to soak into a sheet before hanging.
- Usual Relaxing Time: 5-8 minutes.
- Do a small test strip to determine the proper relaxing time.
- WIPE OFF EXCESS PASTE IMMEDIATELY WITH A SOFT DAMP CLOTH. LEFTOVER PASTE CAN DAMAGE COLOR.

#### **HANGING**

- Adhere product to the wall using a soft bristled nylon brush.
- Cannot be reverse-hung.
- Smooth product to the wall using a plastic smoother. Smooth continuously to remove any bubbles.

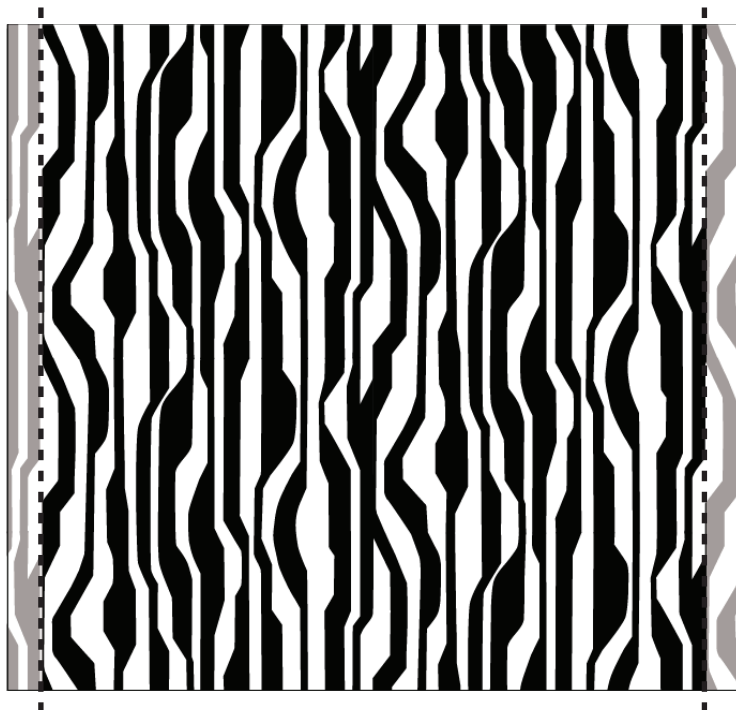
#### **TRIMMING**

- Trim edges APPROXIMATELY 1.75" with a very sharp, single edge razor blade to true. Metal leaf may dull blade.  
USE A NEW BLADE FOR EACH CUT.
- Best results achieved by double-cutting product on wall.

#### **PICTURED ON RIGHT:**

Full 34.5" x 34.5" repeat (black) with approx 1.75" of excess on left and right (grey). Dashed line represents trim-line.

\*For more information on Maya Romanoff's MR-RA-888-1 or MR-RA-888-5, visit [www.mayaromanoff.com](http://www.mayaromanoff.com).



10/25/11



# MAYA ROMANOFF®

Chicago Headquarters: 3435 Madison, Skokie, IL 60076 t 1.773.465.6909 f 1.773.465.7089 [www.mayaromanoff.com](http://www.mayaromanoff.com)