



Totem Nightstand

Good bedside manners...but not just a nightstand
Fits in anywhere you want.

Mounted on the wall or standing free...your choice
Hang them at the height best suited for your bed

All sorts of storage... A drawer and a shelf or a drawer
and a cabinet. A notch for the cords. A door with storage.
Crenulated drawer fronts for extra pleasure!

Designed by Ted

Dimensions:

Wall-mounted/Standard 36W x 19.5D x 29H

Wall-mounted/Petite 25W x 19.5D x 29H

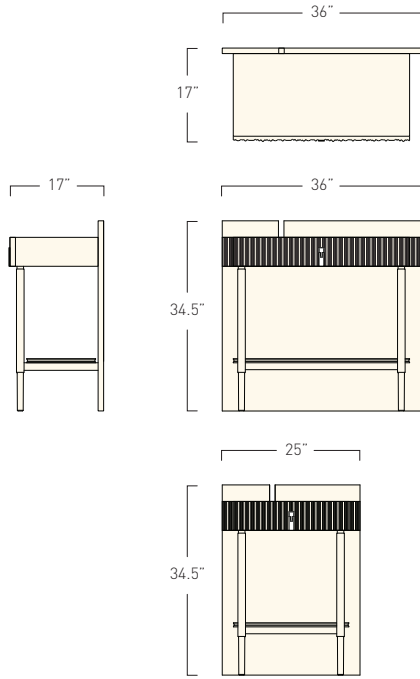
Freestanding/Standard 36W x 19.5D x 29H

Freestanding/Petite 25W x 19.5D x 29H

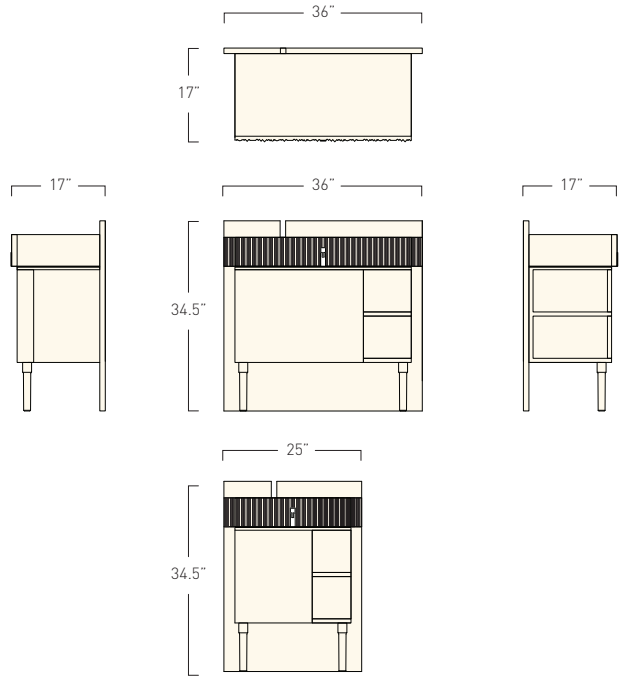
TED BOERNER

TOTEM NIGHTSTANDS

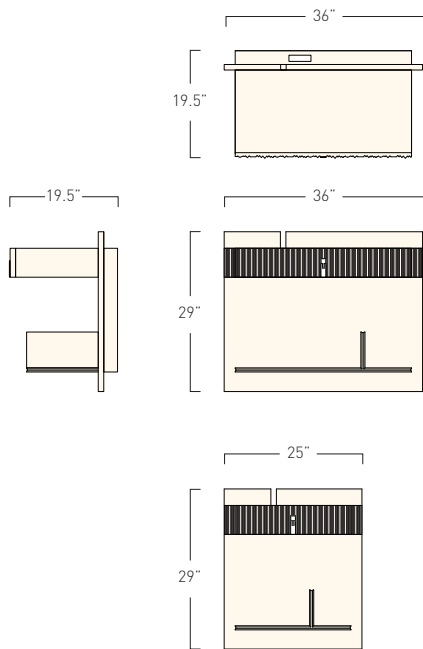
Freestanding with Shelf



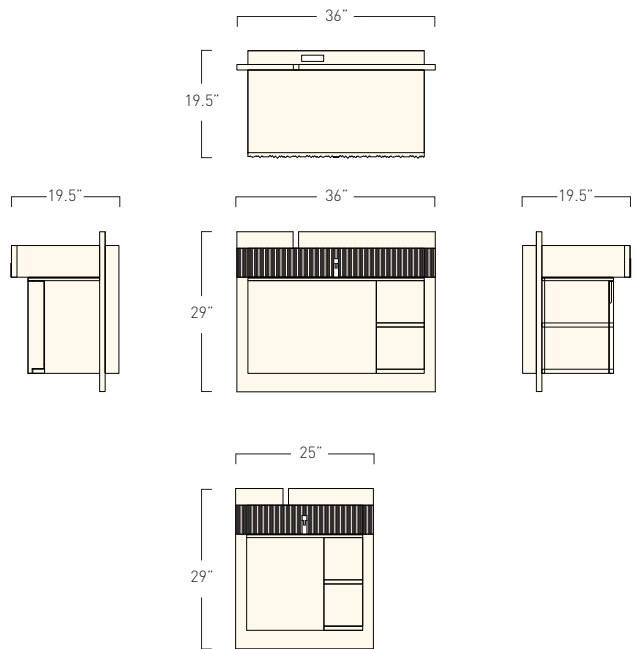
Freestanding with Cabinet



Wall-Mounted with Shelf



Wall-Mounted with Cabinet



TED BOERNER