



PRODUCT SHEET

MERIDIAN 6030

60 x 30 x 21



© BAINULTRA®

FEATURES	
Installation type	- Drop-in - Alcove (3 walls) - Undermount
No. of bathers	1
Heated backrest	1
Integrated tile flange	Included
Control	MiaPlus
ThermoMasseur® bath	\$
Soaker bath	\$

THERAPIES	
Chromatherapy 2-LED	\$
Euphonia® headset (wireless)	\$
COLORS	
Standards	
White	Bone
Biscuit	Almond
Optionals	
Black	Mexican sand
Innocent blush	Cashmere
Sandbar	Grey

WARRANTY	
Controls*	5 years
Bath & turbine*	20 years
*Some restrictions apply www.bainultra.com/warranty	



IMPORTANT: KEEP THE ORIGINAL. PLEASE MAKE COPIES.

MERIDIAN 6030 60 x 30 x 21

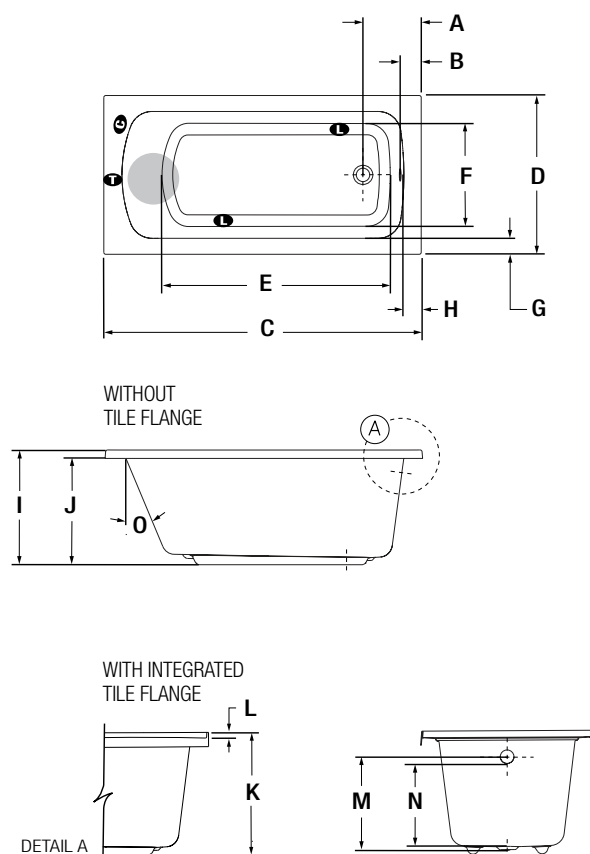
ACCESSORIES - OPTIONAL

Skirts	Littora \$ SJ-1 \$	Elegance \$
Drain & overflow	16" x 35" - Chrome - White, Biscuit, Bone - Brass - Brushed nickel, Polished nickel, Oil-rubbed bronze	\$ \$ \$ \$ \$

Control	MiaMulti \$
Cutting template	# 90000053
Others	- There is a height difference for the integrated tile flange (see Detail A). - Available with or without integrated tile flange (specify right or left) at the same price.

TOTAL PRICE

\$



LETTER	DESCRIPTION	MEASURE
A	Outside edge to center drain	11"
B	Outside edge to overflow	4"
C	Total length	60"
D	Total width	30"
E	Bathing well length	43 5/8"
F	Bathing well width	19 5/8"
G	Deck width	3 1/4"
H	Deck width at drain end	3 1/2"
I	Height from bottom of tub to top deck	20 1/2"
J	Height from bottom of tub to bottom of lip	19"
K	Height from bottom of tub to top of tile flange	21 1/2"
L	Tile flange height	1"
M	Height from drain to center of overflow	16 1/8"
N	Maximum water level	14 3/8"
O	Slope of backrest	24°

T Indicates turbine position
● Indicates heated backrest

L Indicates LED light position
C Indicates control position when factory-installed

MERIDIAN 6030 TECHNICAL SPECIFICATIONS

Jets	37	Hot water supply required	Should be 70% of water capacity of tub or greater.
US gallons	50	Turbine access	Must be at least 18" X 22" to access the turbine. Must be connected to a 15 A, 120 V, 60 Hz, protected by a ground-fault circuit interrupter (GFCI) on a dedicated line.
Imp. gallons	41	Standards	All BainUltra products meet and/or exceed the highest quality and certification standards. For further details about BainUltra's product standards, please go to the following link: (www.bainultra.com/standards).
Approx. shipping weight	100 lbs	Our products must be installed by certified professionals only and according to our Owner's Manual as well as federal, provincial/state and local building codes and regulations (www.bainultra.com/documentation).	
Turbine power	755 W		
Air heater	700 W		

1 800 463.2187 | From 8 a.m. to 8 p.m. Monday to Thursday (EST) . From 8 a.m. to 5 p.m. on Friday (EST)

The specifications shown indicate the outer edge dimension and the inside bathing capacity dimension measured at air jets' height. The manufacturer accepts a 1/4" [0.64 cm] variance. There are variations on each product and specifications are subject to change as we improve upon our product as required. The dimensions needed for site preparation and structure building will differ. BainUltra® assumes no responsibility for preparatory work done prior to the product being on site.