

# PRODUCT SHEET

# ELEGANCIA 7242

72 x 42 x 21

A bath shaped to your preferences.



© BAINULTRA®

## CONTOURS



Drop-in **C10**



Drop-in **C11**



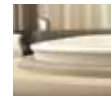
Alcove / Drop-in **C12**



Drop-in **C13**



Drop-in **C14**



Drop-in **C16**

## FEATURES

<b>Installation type</b>	- Drop-in - Alcove (3 walls) C12
<b>No. of bathers</b>	2
<b>Heated backrest</b>	1
<b>Armrests</b>	4
<b>Grab bars (color match)</b>	2
<b>Control</b>	MiaPlus
<b>ThermoMasseur® bath</b>	\$
<b>Soaker bath</b>	\$

## THERAPIES

<b>Chromatherapy</b> - LED	\$
<b>Euphonia™ headset (wireless)</b>	\$

## COLORS

### Standards



White



Bone



Biscuit



Almond

### Optionals



Black



Mexican  
sand



Innocent  
blush



Cashmere



Sandbar



Grey

## WARRANTY

<b>Controls*</b>	5 years
<b>Bath &amp; turbine*</b>	20 years

\*Some restrictions apply | [www.bainultra.com/warranty](http://www.bainultra.com/warranty)



**IMPORTANT:** KEEP THE ORIGINAL. PLEASE MAKE COPIES.

**BainUltra®**

The quest for your wellness™  
[www.bainultra.com](http://www.bainultra.com)

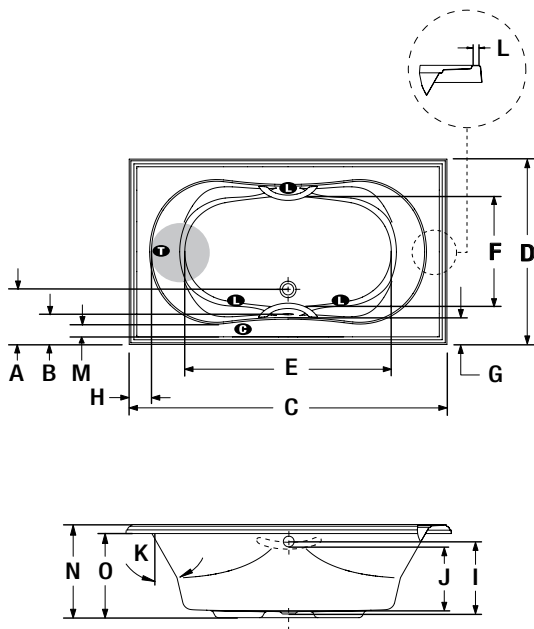
# ELEGANCIA 7242 72 x 42 x 21

## ACCESSORIES - OPTIONAL

<b>Skirts (with C12)</b>	Littora \$ SJ-1 \$	Elegance \$
<b>Clear acrylic grab bars</b>	With Chrome, Brass or Brushed nickel inserts \$	
<b>G11 Metallic grab bars</b>	- Chrome, Brass \$ - Brushed nickel, Polished nickel \$	
<b>Drain &amp; overflow</b>	- Chrome \$ - White, Biscuit, Bone \$ - Brass \$ - Brushed nickel, Polished nickel \$ - Oil-rubbed bronze \$ - Unplated \$	*D14 (Elegancia) \$ D13 (Baileo) \$ N/A N/A N/A
*Piping is not included for this model (D14).		

<b>Control</b>	MiaMulti \$
<b>Cutting template</b>	# 90000041 (C11, C13 & C14)
<b>Other</b>	Optional tile flange for C12 contour. (specify front or back) \$

**TOTAL PRICE** \$



LETTER	DESCRIPTION	MEASURE
<b>A</b>	Outside edge to center drain	12 1/2"
<b>B</b>	Outside edge to overflow	6 1/2"
<b>C</b>	Total length	71 1/2"
<b>D</b>	Total width	41 1/2"
<b>E</b>	Bathing well length	47 1/4"
<b>F</b>	Bathing well width	25 3/8"
<b>G</b>	Deck width (widest point)	6 1/8"
<b>H</b>	Deck width at backrest end	5"
<b>I</b>	Height from drain to center of overflow	16"
<b>J</b>	Maximum water level	14 1/4"
<b>K</b>	Slope of backrest	30°
<b>L</b>	Flat contour width (narrowest point) C12 ONLY	0 5/8"

- Indicates turbine position
- Indicates LED light position
- Indicates heated backrest
- Indicates control position when factory-installed

LETTERS	DESCRIPTION	C10	C11	C12	C13	C14	C16
<b>M</b>	Deck width (narrowest point)	2 5/8"	2 7/8"	1 7/8"	2"	2 1/2"	2 3/4"
<b>N</b>	Height from bottom of tub to top deck	20 3/4"	20 5/8"	21"	20 5/8"	20 3/4"	20 5/8"
<b>O</b>	Height from bottom of tub to bottom of lip	18"	17 1/8"	19"	18 5/8"	18"	18"

## ELEGANCIA 7242 TECHNICAL SPECIFICATIONS

<b>Jets</b>	40	<b>Hot water supply required</b>	Should be 70% of water capacity of tub or greater.
<b>US gallons</b>	60	<b>Turbine access</b>	Must be at least 18" X 22" to access the pump. Must be connected to a 15 A, 120 V, 60 Hz, protected by a ground-fault circuit interrupter (GFCI) on a dedicated line.
<b>Imp. gallons</b>	50	<b>Standards</b>	All BainUltra products meet and/or exceed the highest quality and certification standards. For further details about BainUltra's product standards, please go to the following link: ( <a href="http://www.bainultra.com/standards">www.bainultra.com/standards</a> ).
<b>Approx. shipping weight</b>	141 lbs	Our products must be installed by certified professionals only and according to our Owner's Manual as well as federal, provincial/state and local building codes and regulations ( <a href="http://www.bainultra.com/documentation">www.bainultra.com/documentation</a> ).	
<b>Turbine power</b>	755 W		
<b>Air heater</b>	700 W		

1 800 463.2187 | From 8 a.m. to 8 p.m. Monday to Thursday (EST) . From 8 a.m. to 5 p.m. on Friday (EST)

The specifications shown indicate the outer edge dimension and the inside bathing capacity dimension measured at air jets' height. The manufacturer accepts a 1/4" [0.64 cm] variance. There are variations on each product and specifications are subject to change as we improve upon our product as required. The dimensions needed for site preparation and structure building will differ. BainUltra® assumes no responsibility for preparatory work done prior to the product being on site.