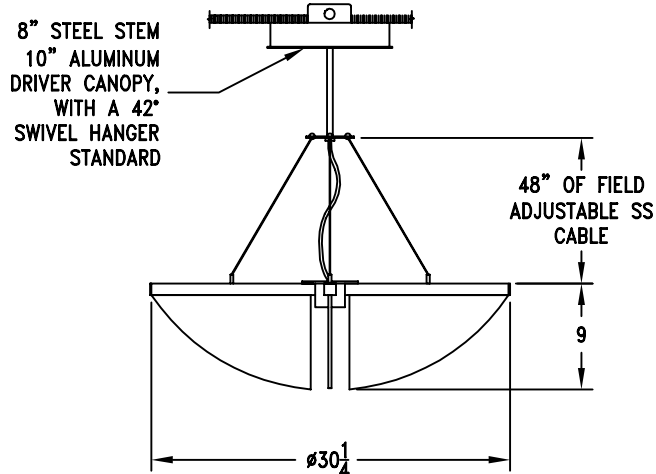
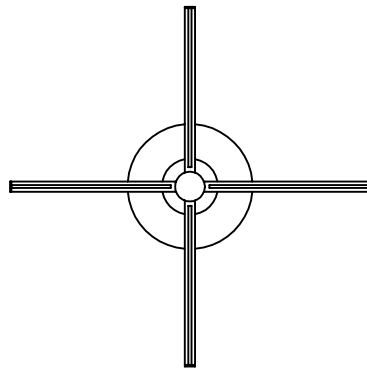


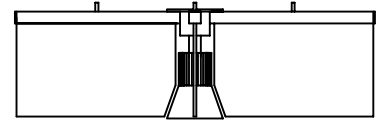
FIXTURE NO.: P-100 PLANAR HORIZONTAL SERIES		TYPE:
DRAWN BY: DsS	DATE DRAWN: 9/18/12	1:16
REVISED BY: PTO	DATE REVISED: 10/02/12	REV: B



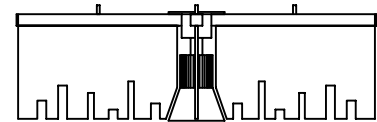
SHOWN WITHOUT OPTIONAL DOWNLIGHT



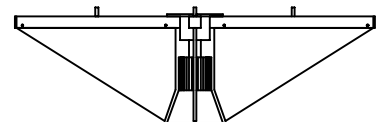
HS



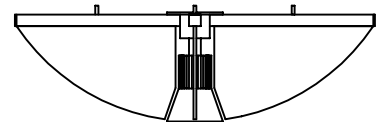
HM



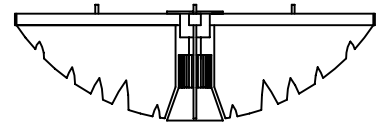
HC



HD



HB



BLADE OPTIONS

1L21C35



DOWNLIGHT OPTION

SPECIFICATIONS

PATENT PENDING - DESIGN MODIFICATION RIGHTS RESERVED © 2012 DIGITAL SPECK LIGHTING by Manning

HOUSING: P-100 – CUSTOM EXTRUDED FRAME MEMBERS, MACHINED ALUMINUM BODY COMPONENTS, WITH STEEL STEM & MOUNT.

BLADES: (4) OPTICALLY CLEAR, 4.5mm THICK, LASER CUT AND LIGHT GUIDE DISTRIBUTION ENHANCED, ACRYLIC PLANAR OPTIC.

SPECIFY BLADE DESIGN OPTION: ☐ HS ☐ HM ☐ HC ☐ HD ☐ HB

LAMPING: 8L7C40 – (8) INTEGRATED LED STRIPS = 56 WATTS, 5880 Lm, 4000K, 82 CRI, L70–60,000 HR.

DN LAMPING: 1L21C35 – (1) INTEGRATED LED ARRAY = 21 WATT, 1300 Lm, 3500K, 85 CRI, L70–60,000 HR.

SPECIFY DOWNLIGHT OPTION: ☐ 1L21C35 ☐ NO DOWNLIGHT

DRIVER: UNIVERSAL VOLTAGE AND 0–10 DIMMING ARE AVAILABLE ON MOST SOLID STATE CONFIGURATIONS.
PLEASE CONSULT FACTORY WITH YOUR SPECIFIC CONTROL SYSTEM FOR VERIFICATION OF COMPATIBILITY.

FINISH: ANODIZED ARCHITECTURAL BLACK OR MATTE SILVER WITH BLACK ANODIZED OR POWDER COAT COMPONENT DETAILS.

SPECIFY FINISH OPTION: ☐ ZB – ANODIZED BLACK ☐ ZS – ANODIZED SILVER

MOUNTING: FIXTURE MOUNTS TO A STANDARD OCTAGONAL JUNCTION BOX. ALL MOUNTING HARDWARE TO BE SUPPLIED BY OTHERS.
FIXTURE IS SUITABLE FOR USE IN INTERIOR "DRY" LOCATIONS, WITH UL RECOGNIZED COMPONENTS.

WARRANTY: DIGITAL SPECK LIGHTING by Manning: 5 YEARS. XICATO DN LAMPING: 5 YEARS

APPROVED: _____ DATE: _____