



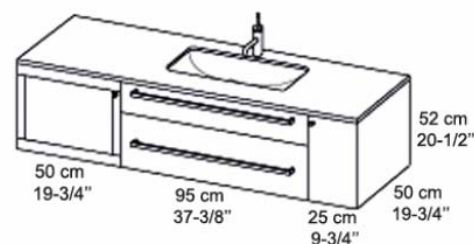
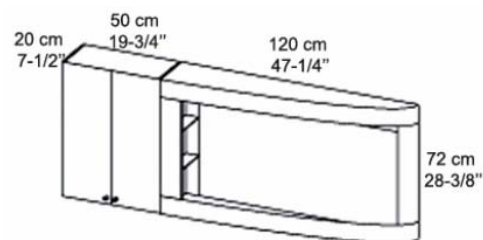
PSCBATH
CORPORATION

CORONA 2 SERIE / MODEL# AB 413

CABINETRY SHOWN IN GREEN & TABACCO OAK COLOR# C59 & C54
INTEGRAL GLASS VANITY TOP COLOR# TV89



MEDICINE CABINET ALSO AVAILABLE IN 51-1/2" AND 55-1/4" WIDE



CORONA 2 SERIE

CABINETRY WITH CHOICE OF:

- NATURAL WOOD FINISH @ OAK, CHERRY, WENGE – REFER TO COLOR CHART
- DYED OAK FINISH @ 9 COLORS AVAILABLE – REFER TO COLOR CHART
- LEATHER FRONT PANELS AVAILABLE IN SEVERAL FINISHES – REFER TO COLOR CHART

GLASS TOP WITH TECNORIL SINK OR INTEGRAL GLASS TOP – REFER TO BOX OF SAMPLES

ALL CABINETS & MIRRORS AVAILABLE @ 27-1/2", 37-1/2", 41-1/2" AND 48" WIDE
VANITY SET AND MIRROR CAN BE ORDERED SEPARATE OR TOGETHER – REFER TO PRICE LIST
POP-UP WASTE AND OVERFLOW TRIM IN POL. CHROME INCLUDED
TECHNICAL SHEET AVAILABLE FOR DOWNLOAD AT www.pscbath.com