

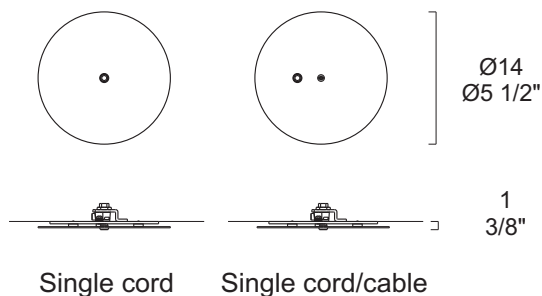
Flat Canopy

rev. 0

Design: Leucos Design Team

Codice: Single cord: 2770100010000
2770100160000
2770100360000
2770100500000

Single cord/cable: 2770099010000
2770099160000
2770099360000
2770099500000



WARNING

- Before starting the wiring, joint the earth wire to the fixing bracket.
- Always unplug the appliance from the power socket before beginning installation or any sort of maintenance work.
- Use a qualified electrician for installation of this lighting fixture.
- Installation of this fixture must comply with local building codes.
- A fixture weighing more than 50lb must be mounted or supported independently of an outlet box.

INSTRUCTIONS

- Avant d'effectuer le câblage, relier le conducteur de terre à l'élément de fixation.
- Avant de procéder à l'installation de l'appareil, ainsi qu'avant toute opération d'entretien, il est nécessaire de couper le courant au disjoncteur.
- Employer un électricien qualifié pour l'installation de ce luminaire.
- L'installation de ce montage doit être conforme à codes du bâtiment locaux.
- Un montage pesant plus que 50lb doit être monté ou soutenu indépendamment d'une boîte de sortie.

ADVERTENCIAS

- Antes de realizar el cableo, acople el conductor de puesta a tierra a la brida de sujeción.
- Antes de proceder a la instalación del aparato y en cualquier caso antes de efectuar cualquier operación de mantenimiento, corte la tensión de red.
- Usar un electricista calificado para la instalación de esta luminaria.
- La instalación de este accesorio debe conformarse con códigos técnicos de la edificación locales.
- Un accesorio que pesa más que 50lb se debe montar o apoyar independientemente de una caja de enchufe.



LOCATION



ISTRUZIONI DI MONTAGGIO ASSEMBLY INSTRUCTIONS

L E U C O S®

FLAT CANOPY

Single cord
Single cord/cable

LEUCOS USA

11 Mayfield Avenue

Edison, NJ 08837 USA

Phone (732) 225-0010 Fax (732) 225-0250

info@leucosusa.com

www.leucosusa.com



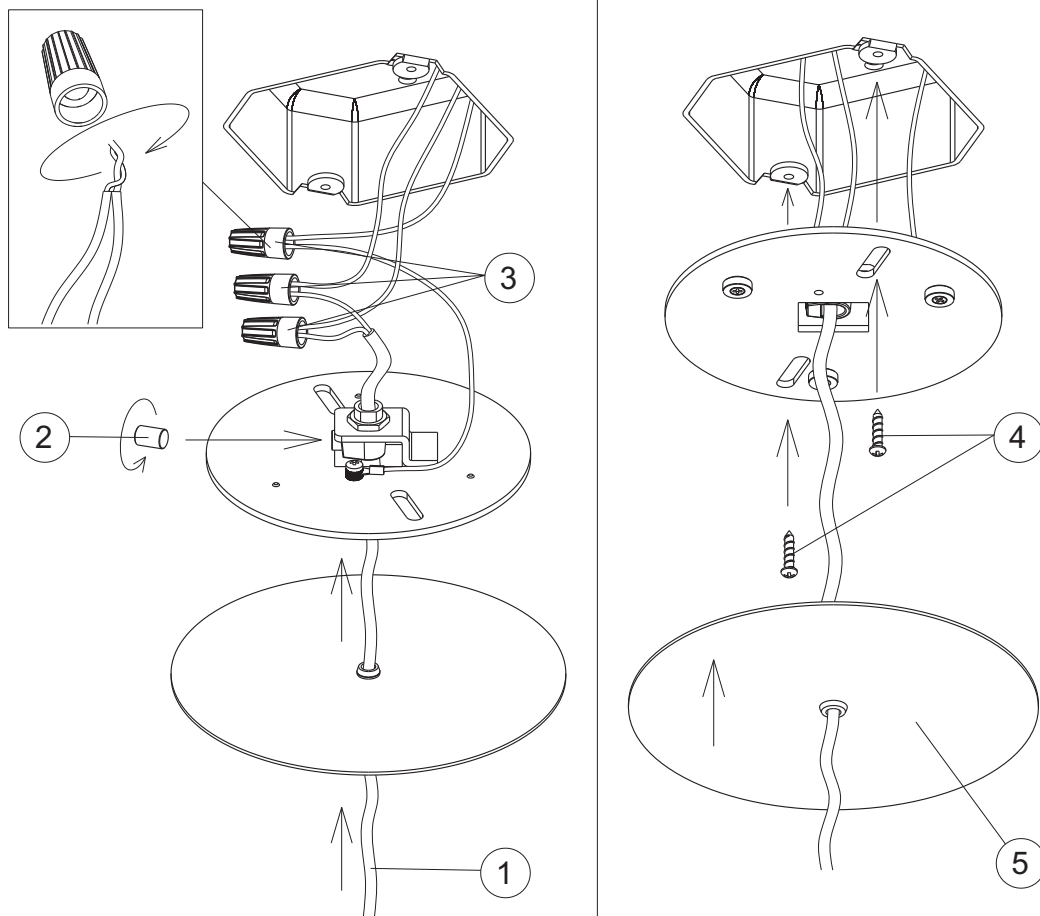
FOLLOW THE ASSEMBLY INSTRUCTIONS BY READING THE NUMERICAL PROGRESSION
EXÉCUTER LES OPERATIONS DE MONTAGE, EN SUIVANT L'ORDRE DE NUMÉRATION PROGRESSIF
EJECUTAR LAS OPERACIONES DEMONTAJE SIGUIENDO EL ORDEN NUMERICO PROGRESIVO

-The safety and reliability are guaranteed only when installation instructions are properly followed. Please retain this instruction sheet for future reference.
 -La seguridad de cet appareil n'est pas garantie en cas de non-respect de ces instructions, qu'il est necessaire de conserver.
 -La seguridad del aparato se garantiza sólo utilizando de forma apropiada las siguientes instrucciones, por lo tanto es necesario conservarlas.

SINGLE CORD CANOPY

WARNING: DISCONNECT POWER BEFORE INSTALLATIONS. FIXTURE TO BE INSTALLED BY A CERTIFIED ELECTRICIAN. INSTALL IN ACCORDANCE WITH THE NATIONAL AND LOCAL ELECTRICAL CODES. FOLLOW DIRECTIONS CAREFULLY IN ORDER TO AVOID SCRATCHING OR DAMAGING THE GLASS DIFFUSER. A FIXTURE WEIGHING MORE THAN 50 LBS MUST BE MOUNTED OR SUPPORTED INDEPENDENTLY OF AN OUTLET BOX.

1. Insert the electrical wire through the hole of the cover and through the cable clamp.
2. Lock the electrical wire with the plastic screw.
3. Make the electrical connections.
4. Attach the metal plate to the J-Box using the screws provided.
5. Secure the cover to the metal plate by the three magnets.
6. Restore power.



SINGLE CORD/CABLE CANOPY

WARNING: DISCONNECT POWER BEFORE INSTALLATIONS. FIXTURE TO BE INSTALLED BY A CERTIFIED ELECTRICIAN. INSTALL IN ACCORDANCE WITH THE NATIONAL AND LOCAL ELECTRICAL CODES. FOLLOW DIRECTIONS CAREFULLY IN ORDER TO AVOID SCRATCHING OR DAMAGING THE GLASS DIFFUSER. A FIXTURE WEIGHING MORE THAN 50 LBS MUST BE MOUNTED OR SUPPORTED INDEPENDENTLY OF AN OUTLET BOX.

1. Insert the electrical wire through the lateral hole of the cover and through the cable clamp.
2. Lock the electrical wire with the plastic screw.
3. Make the electrical connections.
4. Attach the metal plate to the J-Box using the screws provided.
5. Insert the aircraft cable through the center hole of the cover and onto the threaded thumb screw and through the griplock.
6. Screw the threaded thumb screw and make sure the aircraft cable is tightened (if necessary, tighten it with a tool).
7. Secure the cover to the metal plate with the three magnets.
8. Restore power.

