

CEILING SYSTEMS

[Between us, ideas become reality.]®

FILAMENTS™ Tegular Installation Tip Sheet

1. GENERAL

1.1. Product Description

Woven fabric-covered lay-in panels in a variety of colors and designs. Easy to install and configure, even in “as built” environments. Factory Mutual Certified for fire performance and acoustics. Ideal for offices, conference rooms and healthcare spaces.

1.2. Materials and Finishes

Filaments lay-in panels consist of wet-formed mineral fiber covered with woven fabric.

1.3. Storage and Handling

The ceiling panels shall be stored in a dry interior location and shall remain in cartons prior to installation to avoid damage. The cartons shall be stored in a flat position. Proper care should be taken when handling to avoid damage or soiling.

1.3.1. Working With Fiberglass & Mineral Fiber Products FIBERGLASS CEILINGS

MAN-MADE VITREOUS FIBER CEILING PANELS

▲ WARNING THIS PRODUCT CONTAINS MAN-MADE VITREOUS FIBERS. POSSIBLE CANCER AND RESPIRATORY TRACT HAZARDS CAN CAUSE TEMPORARY RESPIRATORY, SKIN AND EYE IRRITATION.

1.3.2. Precautionary Measures

During the installation be certain that the work site is well ventilated and avoid breathing dust. If high dust levels are anticipated during installation such as with the use of power tools, use appropriate NIOSH designated dust respirator. All power cutting tools must be equipped with dust collectors. Avoid contact with skin or eyes. Wear long-sleeve, loose fitting clothes, gloves and eye protection.

1.3.3. First Aid Measures

If contact occurs flush eyes and skin irritation with plenty of water for at least 15 minutes and remove contaminated clothing. After installing material, wash with warm water and mild soap. Wash work clothes separately from other clothing. Rinse washer thoroughly. Refer to Armstrong MSDS (which includes information on established occupational exposure limits) which are available from Armstrong or your employer.

1.4. Site Conditions

Install only after building is closed in and plaster and concrete are dry. Do not store or install under conditions where relative humidity exceeds 70%.

1.5. Product Directionality

Filaments Tegular panels are directional. The back of each panel will be marked with a directional arrow. Install all Filaments panels so the arrows are pointing in the same direction.

Panels will be labeled with a dye lot number (DL_____). Only mix panels with the same dye lot.

1.6. Cleaning Instructions

As routine maintenance, vacuum the fabric surface regularly to minimize dirt accumulation. If vacuuming does not remove the dirt, apply a dry or wet water-based cleaning agent that foams after it is applied. Work it into the fabric with a damp sponge. Remove excess residue by vacuuming.

2. SUSPENSION SYSTEM

2.1. General

The suspension system shall be standard 15/16” tee bar grid. The suspension system whether new or existing shall be properly installed and leveled using not less than 12-gage galvanized steel wire. Suspension system installation shall conform to ASTM C636 and all applicable code requirements.

2.2. Suspension Grid

Filaments panels install in a 2’ x 2’ module. The main beams shall be spaced 48” o.c. The 48” cross tees shall intersect the main beam at 90° every 24”. The 24” cross tees shall be installed at the mid points of the 48” cross tees.

3. INSTALLATION

3.1. General

Clean hands or wear gloves when handling Filaments panels to prevent soiling or staining of the fabric surface. Be sure the area in which Filaments is to be installed is clean.

Full size panels easily install into the grid like standard Tegular ceiling panels.



3.2. Cut Border Panels

Filaments ceiling panels are covered with fabric. The following guidelines are recommended for cutting Filaments border panels.

- Always use a sharp knife to cut the panel.
- Do not cut one panel on top of another panel.
- Never install a border panel with the cut fabric edge below the grid flange.
- Do not peel the fabric from the face of the panel.
- For irregular or curved borders make a template to transfer the shape to the panel.

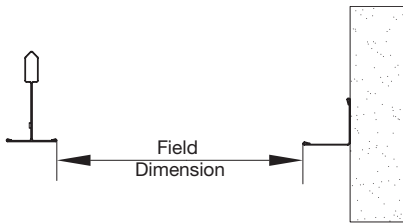
3.3. Installation Options

There are two options to install Filaments borders:

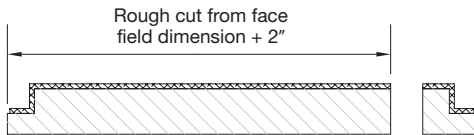
1. Grid Resting on Trim

The border panel must be cut to fit accurately for the best visual and performance.

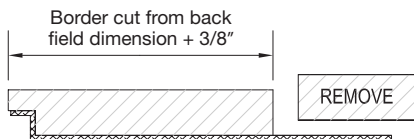
Measure the size of the opening from the edge of the T-bar grid to the edge of the molding (or Axiom® Perimeter Trim). Measure both sides to be accurate.



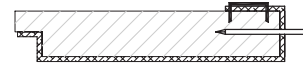
With the panel face up, mark the Field Dimension + 2". Use a sharp knife and straight edge to cut completely through the panel and fabric. This will allow approximately 1-1/2" of fabric to wrap the cut edge.



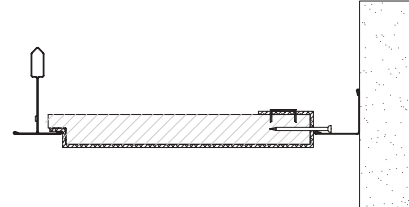
With the panel face down, mark the Field Dimension + 3/8" on both sides of the panel. Carefully cut the panel but not the fabric. Slide the panel so the cut is off the edge of your work surface. Gently make a final cut through the board. Slowly peel the scrap end of the board from the fabric. Use a putty knife or scraper to remove any excess board fragments from the fabric and make a clean straight edge. Use a clean brush as a final step to clean the fabric.



Wrap the excess fabric around the cut edge of the panel. Make sure it is straight and even. Do not pull the fabric too tight. Secure the fabric with staples or adhesive. To support this edge, gently twist a small 3d finish nail, pop rivet or short piece of hanger wire into the edge at the same height of the Tegular edge. Insert this edge support every 8".



Install the border panel with the fabric wrapped edge along the perimeter. Use a clean brush to gently remove any debris from the face of the panel.

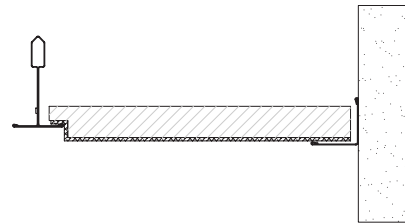


2. Panel Resting on Trim

For this installation the grid must be installed 3/8" above the wall trim. Shadow molding with a 3/8" reveal can also be used.

Measure the size of the opening from the edge of the T-bar grid to the wall.

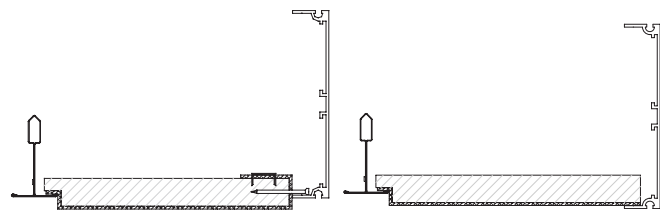
Mark this dimension on the face side of the panel. Use a sharp knife and straight edge to cut the panel. Install the same as a full size panel.



3.4. Axiom Perimeter Trim Options

Grid Resting on Trim

Panel Resting on Trim (Use AX-V-TBC)



3.5. Ceiling Penetrations

The fabric of the Filaments panel is adhered to the face of the board. Use a sharp knife to cut openings in the face of the panel for ceiling penetrations like sprinklers, speakers and light fixtures. All fixtures must have a trim ring to cover the cut edge.

MORE INFORMATION

For more information, or for an Armstrong representative, call 1 877 ARMSTRONG.

For complete technical information, detail drawings, CAD design assistance, installation information and many other technical services, call TechLine™ services at 1 877 ARMSTRONG or FAX 1 800 572 TECH.

For the latest product selection and specification data, visit armstrong.com/ceilings.

U.S. Patents Pending.

All Trademarks are owned by AWI Licensing Company

LA-297159-906

Printed in United States of America

