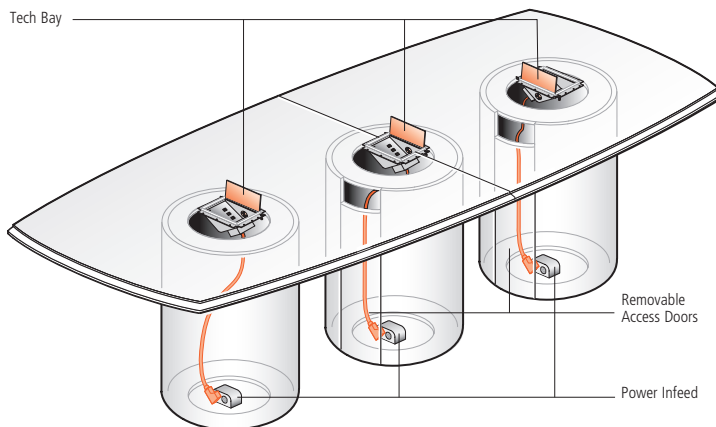


# Power & Data Options

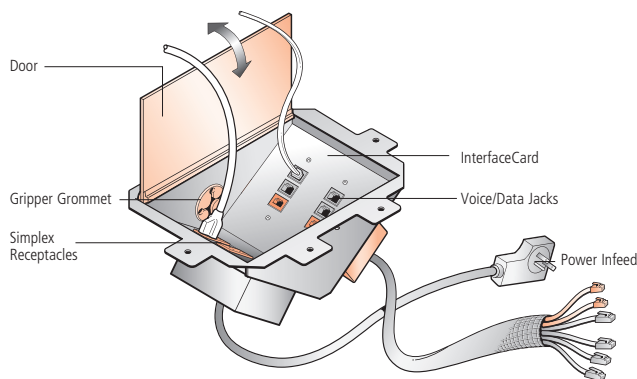
Tech Bay provides easy table top accessibility to power and voice/data connections. Each Tech Bay features a flip-up door that conceals power and voice/data connections. Flip-up doors are available in metal, wood and glass.



**Forté® Shown**

Tech Bay is equipped with the following components:

- Power infeed (plug-in only)
- Four (4) simplex receptacles
- One (1) NEMA size double-gang cutout
- (voice/data)
- One (1) Interface Card (serves as mounting platform for voice/data connectors)
- Four (4) RJ-45 (data) connectors (category 5e)
- Two (2) RJ-11 (voice) connectors
- 15 AMP circuit breaker



**Plug-N-Play Option Shown**

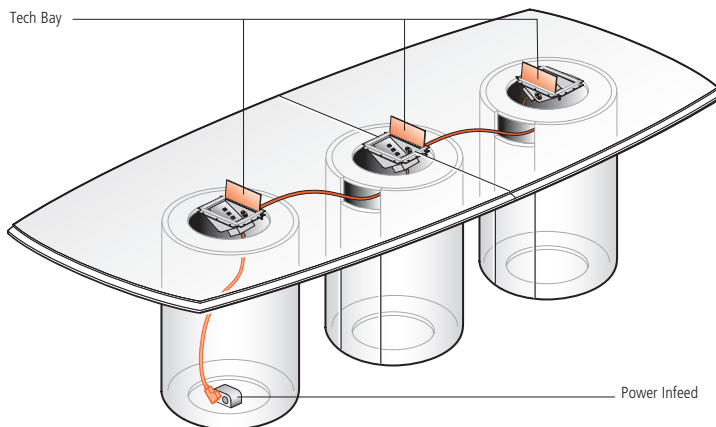
The gripper grommet provides access into the Tech Bay from under the table.

Tech Bay Plug-N-Play Option:

- Four (4) 10' data supply cords (category 5e)
- Two (2) 10' voice supply cords

The Tech Bay Daisy Chain option allows a single infeed to power all Tech Bays. The standard power infeed location for the Daisy Chain option on Conference Tables is at the end of a table. A table layout is required for non-standard infeed locations.

There is no standard infeed location for the Daisy Chain option on Saber Training Tables and Duomo Open Sight Line Tables. A table layout is required when these products are specified with the Daisy Chain option.



**Daisy Chain Option Shown**

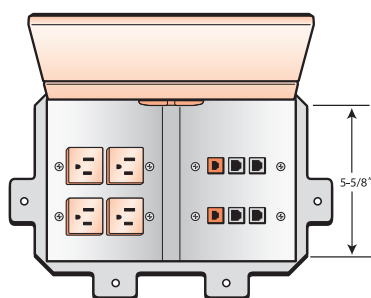
## Power and Voice/Data Capabilities

Tech Bay is available on all Nucraft conference table collections. Refer to individual product sections for specific Tech Bay application guidelines.

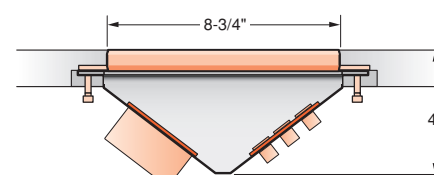
Table Length	Maximum Quantity Units	Simplex Receptacles Provided	Voice/Data Jacks Provided	Interface Cards
42-72" diam.	1	4	6	1
72"	1	4	6	1
84"	1	4	6	1
96"	3	12	18	3
120"	3	12	18	3
144"	3	12	18	3
168"	3	12	18	3
192"	3	12	18	3
216"	3	12	18	3
240"	4	16	24	4

## Dimensions

Plan View



End Elevation View



## Power Planning

### Tech Bay Electrical System

- Four (4) simplex receptacles provided per unit.
- 15-amp power infeed (plug-in only) with 10' cord.
- UL listed (unless Daisy Chain option is selected).

### Chicago Electrical Requirements

The city of Chicago may require hardwiring of electrical components. For Chicago applications, Nucraft provides a non-powered unit; specific electrical components such as receptacles must be purchased in the field. Chicago-designated units contain all standard voice/data components.

### Other Municipality Electrical Requirements

Other metropolitan areas besides Chicago may have special electrical requirements as well. Consult a local electrical contractor for proper code compliance information.

## Voice/Data Planning

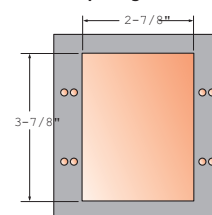
Tech Bay includes one (1) NEMA size double-gang cutout containing:

- One (1) Interface Card (serves as mounting platform for voice/data connector)
- Two (2) RJ11 (voice) snap-in connectors
- Four (4) RJ45 (data) snap-in connectors (category 5e)

Tech Bay Plug-N-Play option includes:

- Four (4) 10' data supply cords (category 5e)
- Two (2) 10' voice supply cords

Cutout Opening Dimensions



Nucraft recommends consulting an audio/visual (AV) integrator for specific assistance with voice/data planning.

### Voice/Data Product Manufacturers

Manufacturer	Phone Number	Web Site
AMP	1-800-522-6752	<a href="http://www.tycoelectronics.com">www.tycoelectronics.com</a>
Avaya	1-800-344-0223	<a href="http://www.avaya.com">www.avaya.com</a>
Krone	1-800-775-5766	<a href="http://www.kroneamericas.com">www.kroneamericas.com</a>
Leviton	1-800-722-2082	<a href="http://www.leviton.com">www.leviton.com</a>
Panduit	1-800-777-3300	<a href="http://www.panduit.com">www.panduit.com</a>
Siemon	1-800-274-2523	<a href="http://www.siemon.com">www.siemon.com</a>