



Making the Connection

NUCRAFT

Discovery Instructions

<u>Section</u>	<u>Pages</u>
Overview of Discovery Table	1
Typical Configurations	2
Discovery Table Components	3-4
How to Configure and Connect Tables	5-8
How to Disconnect and Reconfigure Tables	9
Connecting Ender Tables End-to-End	10

Overview of Discovery

Discovery conference tables are multiple-piece conference tables that may be reconfigured to support a variety of applications.

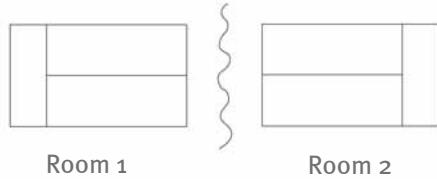
For example, the six-piece Discovery table (shown below in plan view) may be reconfigured into a number of configurations, several of which are shown on the facing page. Standard Discovery tables are offered in 4-, 6-, and 8-piece configurations.



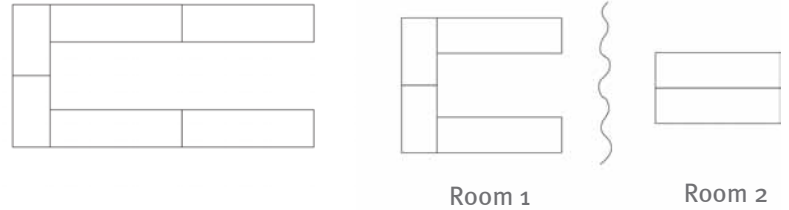
6-piece Discovery Table in Conference Configuration

Typical Configurations

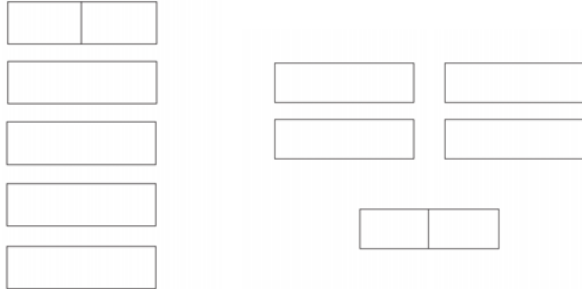
Dual Conferencing



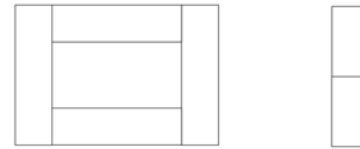
U-Shape



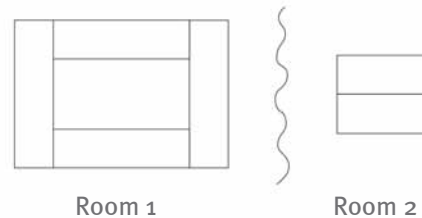
Classroom



Congress



Congress with Serving Table

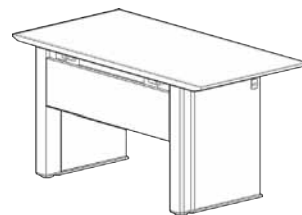


Congress and Breakout Table

Components

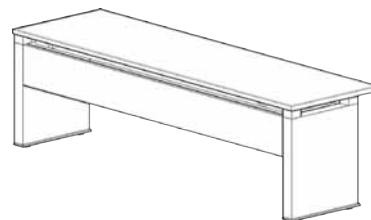
End Tables:

- Three sizes (L x W): 48" x 24", 54" x 27", and 60" x 30"
- Grain runs in the direction of the table length
- Bases are inset 7" from the edges of the table top ends
- Fixed, Pivoting or Inset Panel base options



Center Tables:

- Three widths: 24", 27", and 30"
- Multiple lengths available
- Grain runs in the direction of the table width
- Bases are flush to the edges of the table top ends
- Fixed Panel Base only (does not pivot)



Ender	Center	Center	Ender
	Center	Center	

6-piece Discovery Table in
Conference Configuration



Inset Panel
Base



Fixed Panel
Base



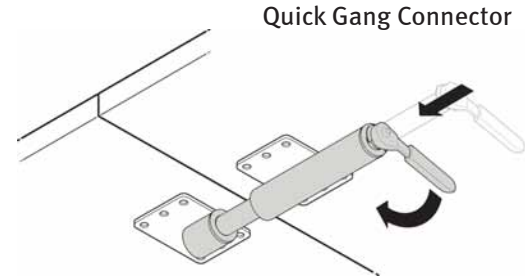
Pivoting Panel
Base (Ender only)

Quick Gang Connector

- Used to securely gang, level and flush adjacent tables
- Two on each Ender table
- Two on each Center table
- Located underneath each table near the edges



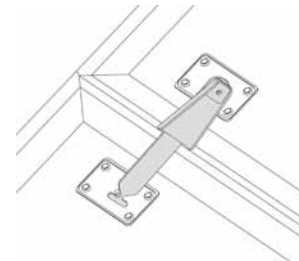
Center Table
Quick Gang Connector Locations



Ender Table
Quick Gang Connector Locations

Ender Table Ganging Connector

- Used to gang Ender tables end-to-end
- One on each Ender table
- Located underneath the top, near one end



Ender Table Ganging Connector

How to Configure and Connect Tables

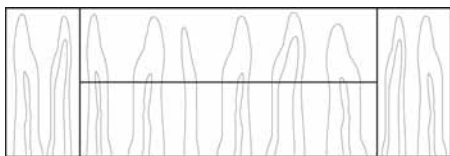
Step 1. Arrange tables in desired configuration.

For Conference Table Configurations:

Center Tables

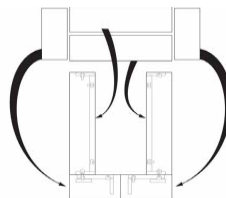


Note: To arrange individual tables into a single conference table configuration with a grain-matched top, locate and match numbered markings under the table (as shown above). The result will be a grain-matched top (as shown below).



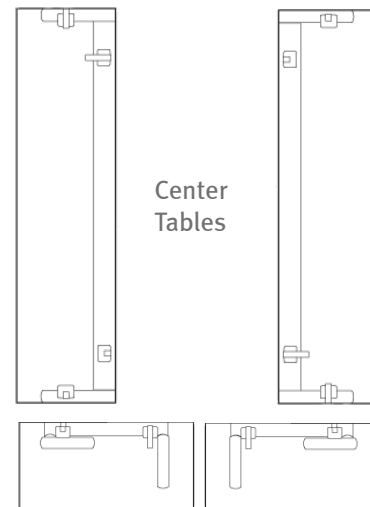
Wood Grain Match Example
(2 Ender tables and 2 Center tables)

Reconfiguration
Example



From
Conference
To
U-Shape

For U-Shape Configurations:

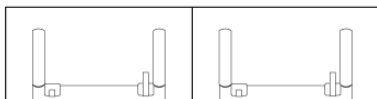


Ender
Tables

How to Configure and Connect Tables

For Classroom Configurations:

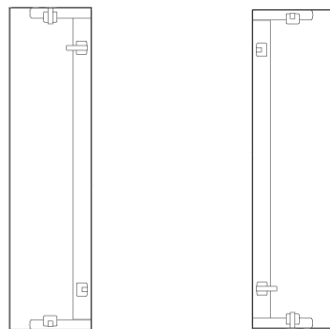
Center Tables



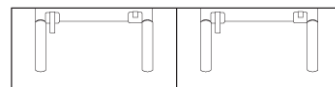
End Tables

For Congress Configurations (6-piece):

Center Tables



End Tables

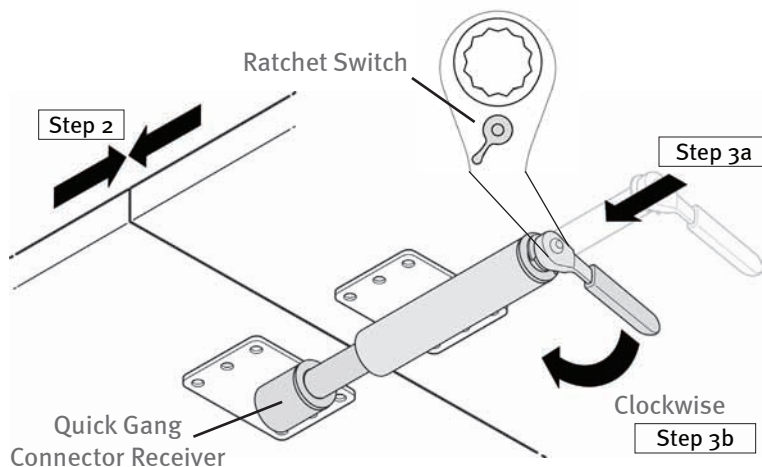


How to Configure and Connect Tables

Step 2. Push tables together, flushing the edges as much as possible. Locate Quick Gang Connectors (underside of tops). Be sure the ratchet switch is flipped to the left.

Step 3. (a) Grasp the handle and push connector (with force) into the Quick Gang Connector Receiver in the adjacent table. (b) Turn clockwise until tight. Note: Connector is designed to spring back if not adequately engaged.

Step 4. Rotate the ratchet handle up against the underside of the table top (it may be necessary to flip the ratchet switch to keep the handle from falling down).



Connect Quick Gang Connectors
as arrows indicate



How to Configure and Connect Tables

Step 5 (optional). On Pivoting Panel Bases only, locate the finger latch on outer side of the Ender table panel base. Press down finger latch and rotate the base inward for the closed position. Note: Ender table panel bases must be in the open position prior to disconnecting tables.

Bases in open position



Bases pivoting closed



Bases in closed position



How to Disconnect and Reconfigure Tables

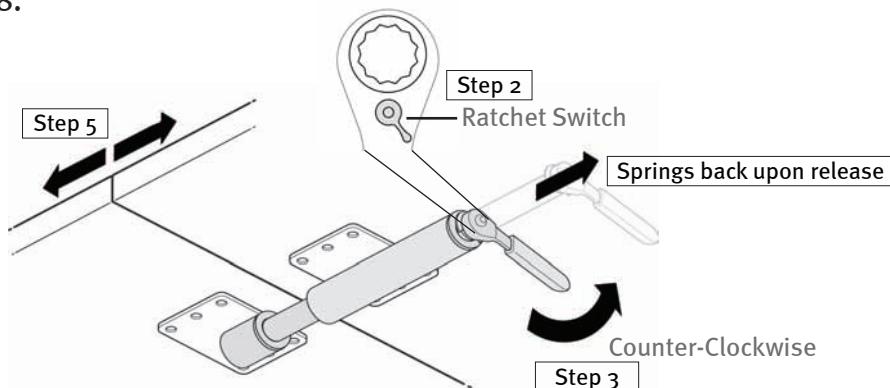
Step 1. If starting from a conference table configuration, make sure Ender bases are in the open position prior to disconnecting tables (see page 8).

Step 2. Locate Quick Gang Connectors (under side of tops). Be sure the ratchet switch is flipped to the right.

Step 3. Grasp the handle and turn counter-clockwise until the Quick Gang Connector releases from the adjacent table. Note: Connector is designed to spring back upon release.

Step 4. Rotate the handle up against the underside of the table top so the magnet holds it securely.

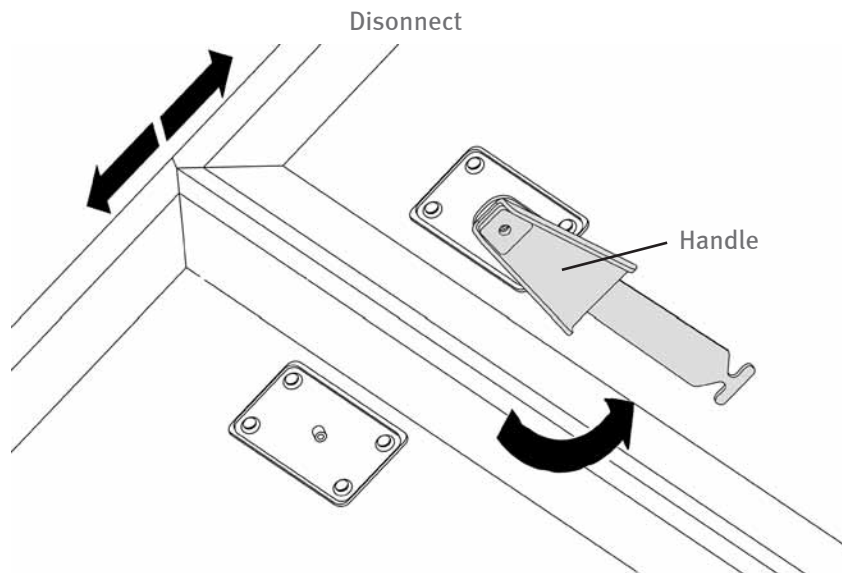
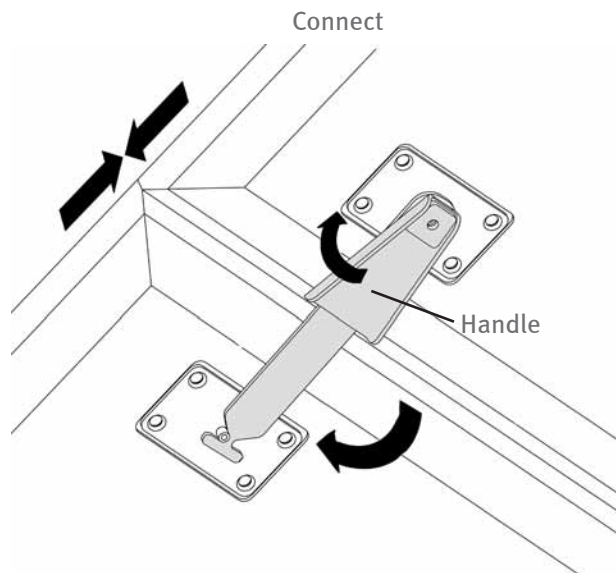
Step 5. Move tables into new desired configuration. See “How to Configure and Connect Tables” instructions on pages 5-8.



Connecting Ender Tables End-to-End

Step 1. To connect, swivel the Ender Table Ganging Connector until it connects with the adjacent table and continue to rotate the handle until tight.

Step 2. To disconnect, swivel Ender Table Ganging Connector away from adjacent table by rotating the handle.



Still have questions?

Please contact the Nucraft Customer Service Department at 1-877-NUCRAFT (1-877-682-7238).

Discovery

NUCRAFT

5151 West River Drive
Comstock Park, MI 49321
nucraft.com

p 616.784.6016
f 616.784.4402
1.877.NUCRAFT