

PEERLESS®  
An **Acuity** Brands Company

## Aero® & Enzo®

Should exceptional lighting performance be limited to a fortunate few? We think not. Aero and Enzo were first to deliver elegant form and advanced HOT-5® technology in a practical modular system for applications with lean budgets.

Their look is classic Peerless: refined architectural forms, minimal 6" x 2" dimensions, smooth fit and finish. Their optical systems deliver extraordinary performance in working and learning environments. Yet these linear systems are, quite simply, priced to please.

The angular Aero design and elliptically shaped Enzo may be specified as totally indirect; choose indirect/open or continuous window patterns of perforation for a bolder appearance and a hint of downlight below.

Aero and Enzo leverage Peerless' exclusive HOT-5 technology to deliver a remarkably smooth

distribution of light. They meet IES RP-1 standards for ceiling uniformity and reduced glare, even when spaced up to 12 feet on center, significantly reducing initial investment and life-cycle costs.

Strong and durable, Aero and Enzo 4', 8' and 12' modules join end-to-end to form perfectly straight, uninterrupted runs of virtually any length. Effortless power connections and a universal mounting system provide utmost flexibility and cost savings during installation.

# Aero & Enzo

## SPECIFICATIONS

### CONSTRUCTION

Die-formed cold-rolled steel housing. Flat steel end plate.

### SHIELDING

Partially Perforated windows on AEM2 and EZM2. Continuous perforated window with option CWIN on AEM2 and EZM2.

### REFLECTORS

Die-formed pre-painted white steel or specular aluminum.

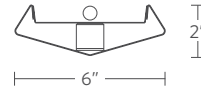
### FINISH

Fine textured white polyester powder paint standard, custom colors available.

### FIXTURE LENGTH

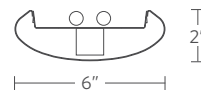
4', 8' and 12' individual fixture sections for nominal suspension spacing of 4', 8' and 12'. Add 1/16" for each standard end cap or to determine total fixture length. Using internal joiners, 4', 8' and 12' sections can be joined to form longer length fixtures.

## DIMENSIONS / LAMPING



### AEM Aero

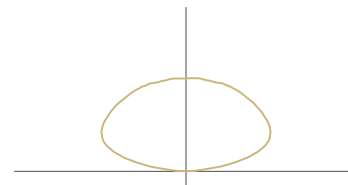
(1, 2) T5, T5HO



### EZM Enzo

(1, 2) T5, T5HO

## PERFORMANCE



### EZM1 (1) T5HO

100.0% Indirect

0.0% Direct

86.3% Efficiency

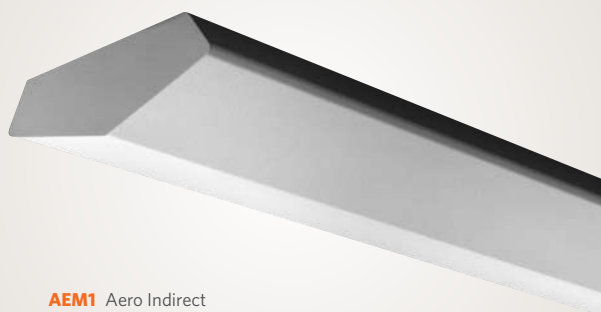
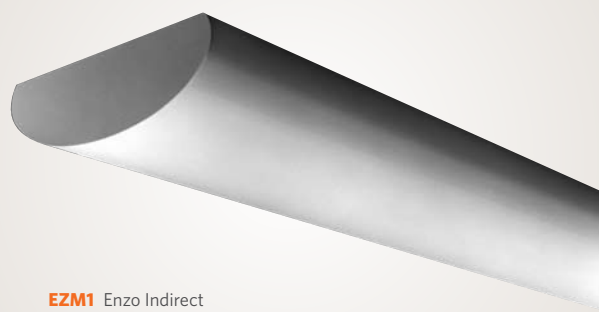
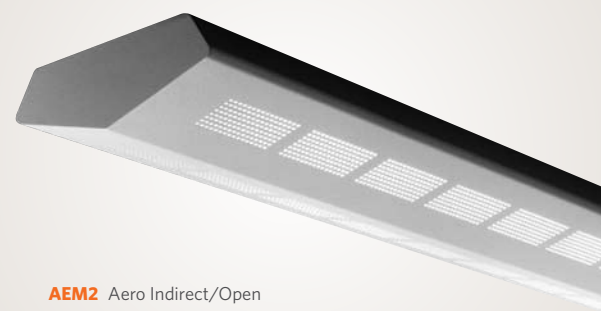
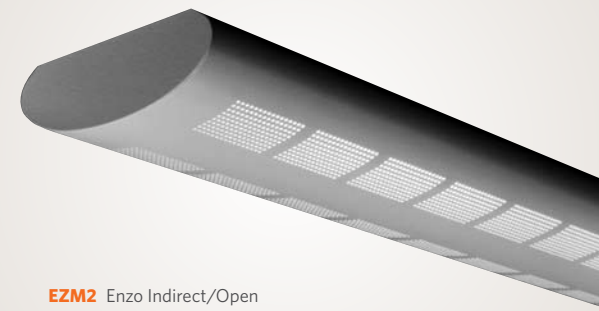
For complete photometric data see specification sheets at [www.peerless-lighting.com](http://www.peerless-lighting.com).

## ORDERING INFORMATION

Fixture	# of Lamps in Cross Section	Lamp Type	Reflector	Shielding	Nominal Row Length*	Maximum Section Length	Voltage	Ballast Type	# of Emergency Modules	Emergency Type	▶▶▶
AEM1	1	54T5HO	WHR White Reflector	(Blank) None	_____ FT	R4 4' section	120	GEB10 <10% THD Electronic Ballast	(Blank) None	(Blank) None	
AEM2	2	28T5	SPR Specular Reflector	CWIN* Continous Perf. Windows	*Must be in 4" increments.	R8 8' section	277	ADEZ <sup>1,2</sup> Advance Mark 10 dim	1SE 1 section	EL Emerg. Battery Pack	
EZM1						R12 12' section	347	ECO10 <sup>1</sup> Lutron ECO-10 dim	2SE 2 sections	EC Emerg. / Night Light Circuit	
EZM2				*EZM2 & AEM2 only				OSDIM <sup>1,2</sup> Osram 0-10V dim	XSE X sections	EN Emerg. Battery Pack w/ Night Light Circuit	
<sup>1</sup> Not available in 347 Volt. <sup>2</sup> Not available with 28T5 Lamp Type. Reference Ballast Chart on website or consult factory for other options.											



Sample Catalog Number: AEM1 1 54T5HO WHR 40FT R12 277 GEB10 2SE EL SCT LP841 C518 GLR F1/24

**AEM1** Aero Indirect**EZM1** Enzo Indirect**AEM2** Aero Indirect/Open**EZM2** Enzo Indirect/Open**AEM2 CWIN** Aero Continuous Window**EZM2 CWIN** Enzo Continuous Window

Switching	Lamp Color	Finish	General Options	Mounting Type /	Overall Suspension	Mounting Options
<b>SCT</b> Single Circuit	<b>L/LP</b> No Lamp	<b>C110</b> Painted Silver to Match Anodized Aluminum Finish	<b>DL</b> Damp Location Label	<b>F1</b> T-Bar Ceiling (Universal Mounting Bracket)	<b>12</b> 12"	<b>ACG</b> Adjustable Cable Grippers
<b>DCT</b> Dual Circuit	<b>LP830</b> 3000K 80+ CRI		<b>DU</b> Dust Cover		<b>15</b> 15"	<b>CP</b> Chicago Plenum (F1A)
	<b>LP835</b> 3500K 80+ CRI	<b>C518</b> Textured White (Low Gloss)	<b>ELH</b> EM Through Wire w/ Separate Feed	<b>F1A</b> T-Bar Ceiling (Universal Mounting Bracket w/ integrated J-box)	<b>21</b> 21"	<b>MCS</b> Matching Feed Canopy at Support
	<b>LP841</b> 4100K 80+ CRI	<b>C099</b> Custom Color (consult factory)	<b>ELS</b> EM Through Wire w/ Single Feed		<b>24</b> 24"	<b>OJB</b> Offset J-Box at Feed Location
	<b>T5 only:</b>		<b>ELS2</b> Normal Feed w/ EM Separate Neutral (Dual Feed Cord)	<b>F2</b> Hard Ceiling (Horizontal J-box)	<b>XX</b> XX"	
	<b>LP830P</b> 3000K 80+ CRI Premier		<b>GLR</b> Fusing (Fast Blow)	<b>F4A</b> IDS Clip 15/16" Tee		
	<b>LP835P</b> 3500K 80+ CRI Premier		<b>GMF</b> Fusing (Slow Blow)	<b>F4B</b> IDS Clip 9/16" Tee		
	<b>LP841P</b> 4100K 80+ CRI Premier		<b>NYC</b> New York City Code	<b>F4C</b> IDS Clip Screw Slot		
	Reference Lamp Chart on website or consult factory for other options.					



[www.peerless-lighting.com](http://www.peerless-lighting.com)

---

**PEERLESS LIGHTING** ▪ Box 2556, Berkeley, CA 94702-0556 ▪ **Tel:** 510.845.2760 ▪ **Fax:** 510.845.2776

© 2009 Acuity Brands Lighting, Inc. All Rights Reserved. "Peerless" is a registered trademark, and "Aero" and "Enzo" is a trademark of Acuity Brands Lighting. Products in this brochure may be covered by one or more U.S. Patents and Patents Pending. Peerless Lighting reserves the right to change materials or modify the design of its product without notification as part of the company's continuing product improvement program.

An **Acuity Brands** Company