

# Limestone 010

Echo 2551

## Specifications

### Contents

100% recycled polyester

### Weight

10.0 ± 0.5 oz./lin. yd.

### Width

54" min. useable

### Repeat

11.25" vertical, 6.75" horizontal

### Treatment

polyester binder

## Cleaning Code

Standard Care Label W-S.

Clean with water based cleaning agents, foam or pure, water free solvents. Vacuuming or light brushing is recommended to prevent dust and soil buildup.

## Performance



### Breaking Strength (ASTM D5034)

225 lbf min. warp and 200 lbf min fill

### Tear (ASTM D2261)

15 lbf min. warp and fill

### Seam Slippage (ASTM D4034)

70 lbf min. warp and fill

### Pilling resistance (ASTM D3511)

Class 4 min.

### Colorfastness to light (AATCC 16 Option 3)

Grade 4 min. at 40 hours

### Colorfastness to crocking (AATCC 8)

Grade 4 min. dry & Grade 3 min. wet

### Colorfastness to water (AATCC 107)

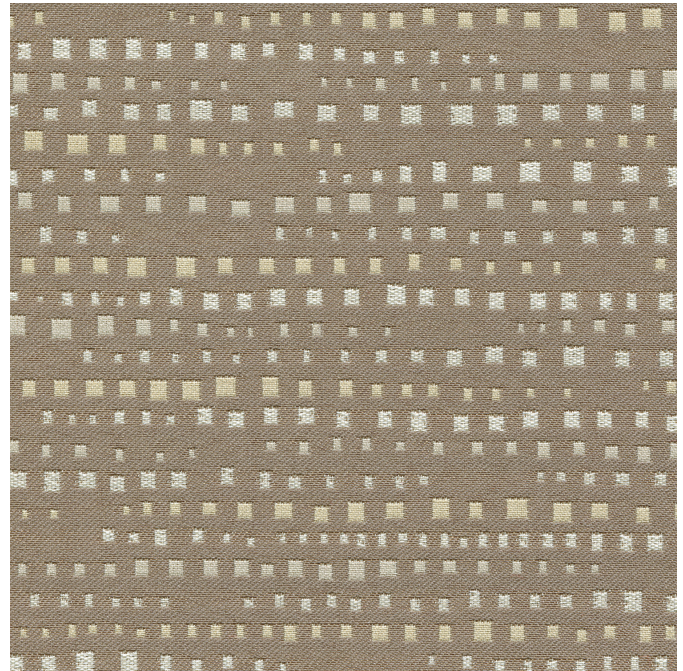
Class 3 min. for staining  
Class 4 min. for color change

### Wyzenbeek Abrasion resistance (ASTM D4157)

100,000 double rubs min. cotton duck

### Flammability

CA Tech Bulletin 117 Sec. E  
NFPA 260/UFAC Fabric Classification - Class I



Terratex is a registered trademark of True Textiles, Inc. and designates fabrics that are made from 100% recycled or compostable material using increasingly sustainable manufacturing practices to produce a high quality product that is recyclable at the end of its useful life. (terratex.com)



CO<sup>2</sup> emissions from 100% of the electricity used by the manufacturer to produce this product have been measured and offset in accordance with the CarbonNeutral Protocol.



**Guilford of Maine**