

DESIGN
TEX

Komposition
2745

Upholstery
Wrapped Panel



Komposition

2745



2745-101



2745-102



2745-103



2745-201



2745-202



2745-203



2745-301



2745-302



2745-401



2745-402



2745-501



2745-503



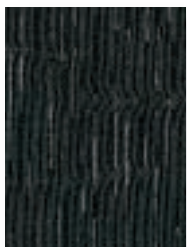
2745-504



2745-701



2745-801



2745-802



2745-803



2745-804

Usage	Upholstery Wrapped Panel
Width	55"
Weight	12.16 oz./lin.yd.
Repeat	V-16 1/4" H-14 1/4"
Contents	100% Polyester
Abrasion	100,000 Wyzenbeek
Cleaning Code	WS
Warranty	10 years

Fabric shown railroaded.

Pass ASTM E-84 Unadhered Class A

Custom colors available through Unique Solutions.

Meets or exceeds these ACT Performance standards:



*ACT Registered Certification Marks

GuggenheimMUSEUM

Abstract Matters is the second collection resulting from a unique, ongoing relationship between Designtex and the Guggenheim Museum.

There may be variation in color, texture and finish between the sample shown and the actual product.

©Designtex

Designtex
800 221 1540
www.designtex.com

A Steelcase Company