

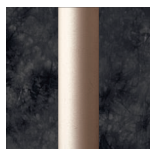


UMBRELLAS &
UMBRELLA BASES

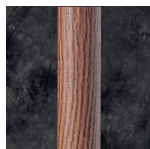
ALUMINUM MARKET

Size	Vents	Pole	Lift	Tilt
7 1/2' Octagon	Single	1 1/2"	Crank	Push-Button
9' Octagon	Single	1 1/2"	Crank	Push-Button
9' Octagon	Single	1 1/2"	Crank	Auto-Tilt
9' Octagon	Single	1 1/2"	Crank	Collar-Tilt

- 2-piece aluminum pole offers easy storage and assembly.
- 8-Rib canopy support construction.
- Easy-to-use ratchet crank with push-button tilt, auto-tilt, or collar-tilt available.
- 4 Pole Colors Available:



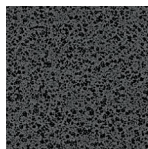
Champagne



Dark Wood



Pecan

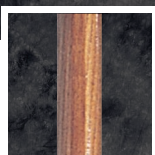
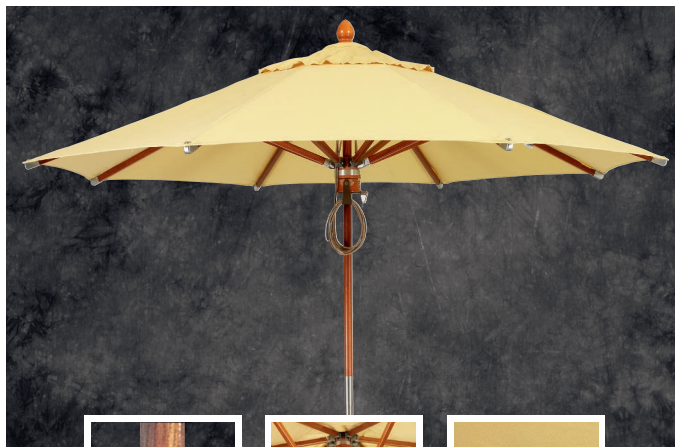


Hammered Pewter

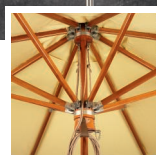


Please see your price list for specific size/color combinations available.

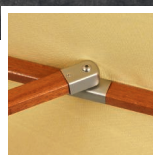
WOOD MARKET



Teak



Hub



Joint

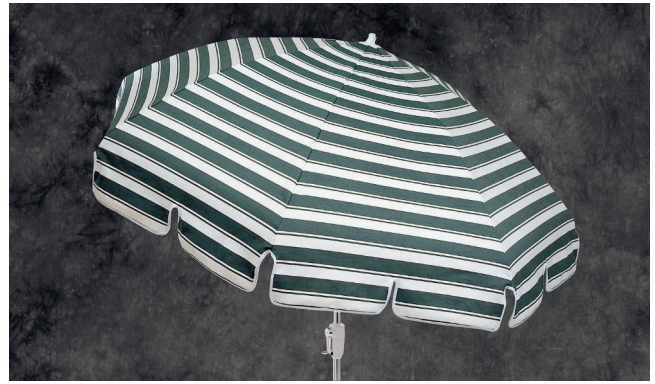
Size	Model #	Vents	Pole	Lift
9' Octagon	9821TW	Single	1 1/2"	Pulley

- Solid ash 2-piece pole laminated for strength and protection against warping.
- Sealed with multiple varnish coats for beautiful stained teak finish.
- Solid brass pole connector provides maximum stability.
- 8-Rib canopy support construction.
- Multi-laminate hub and finial made from Northern Ash hard wood. Hub internally reinforced with stainless steel hardware.
- 8" aluminum flush pole guard protects pole and minimizes swelling in stand.
- Single-vent canopy allows for airflow and helps prevent wind damage.

STANDARD CONVENTIONAL TOP

Size	Lift	Tilt Mechanism	Solid Colors/Patterns
7 1/2' x 8-Rib	Crank	Push-Button	77W210
8 1/2' x 12-Rib	Crank	Push-Button	78W210
8 1/2' x 12-Rib	Crank	Auto-Tilt	78W610

- Crank lift is engineered to prevent handle "fly-back."
- Positive braking system eliminates accidental lowering.
- 1 1/2" diameter aluminum pole.



77W210

FIBERBUILT UMBRELLAS

BRIDGEWATER



Hub

FiberTeak

Size	Model #	Vents	Pole	Lift
8' Octagon	1480BRPUW	Single	1 1/2"	Push-Up
9' Octagon	1490BRPUW	Single	1 1/2"	Push-Up
11' Octagon	1411BRPUW	Single	1 1/2"	Push-Up

- 1-piece simulated wood pole.
- Solid wood hub with stainless steel hardware.
- Fiberglass 8-rib canopy support construction.
- Single-vent construction.

UMBRELLA BASES

Cast Base:



76C721*

*Available with Woodard Wrought Iron, Aluminum and Cast Aluminum tables.

- For use with both market and conventional umbrellas.
- Constructed from cast aluminum with a total weight of 50 pounds.
- Can be powder-coated in any standard or premium Woodard finish.



Free-Standing Market Umbrella Base:



97210W

- For use with market umbrellas less than 10' in size.
- Construction: Cement filled, high-density, blow-molded plastic.
- Available in: 70 pounds, 20" diameter.



50 lb. Conventional Umbrella Base:

97200W	White
97201W	Sandstone
97202W	Taupe
97204W	Black
97209W	Brown

- For use with all Woodard tables.