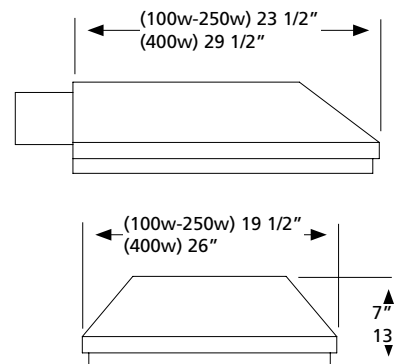


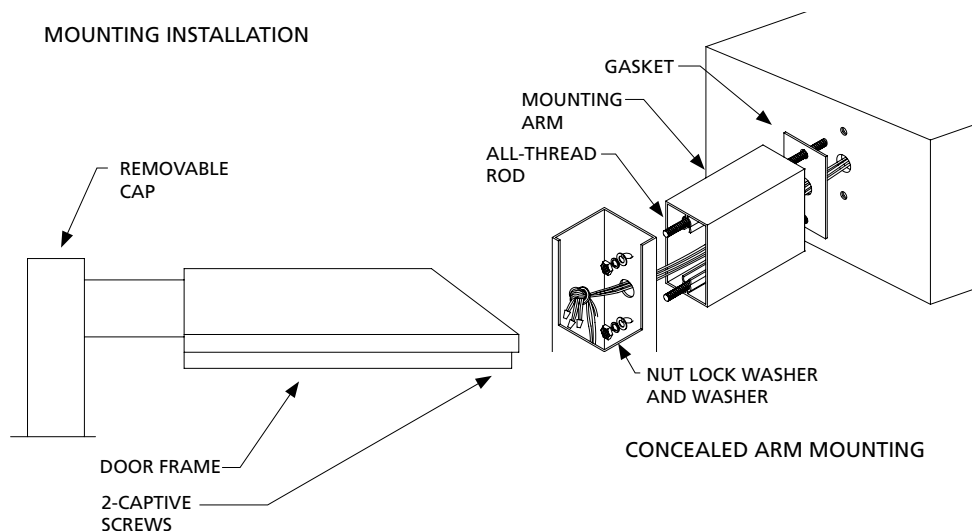
## INSTALLATION SHEET

### Safety, Warnings and Suggestions

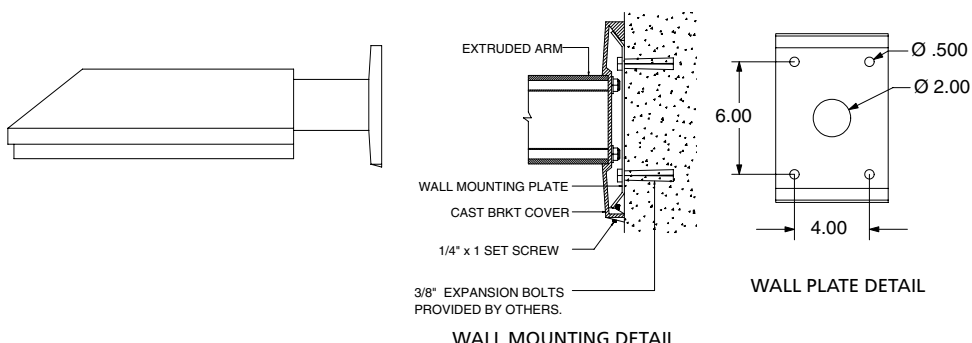
- <sup>1</sup> **Care** should be taken not to position fixtures in locations where bare skin can come into contact with the potentially high temperatures on the lens.
- <sup>2</sup> **Make** sure that electrical power is disconnected before any work is performed.
- <sup>3</sup> **All** gaskets and sealing surfaces must be kept clean during installation.
- <sup>4</sup> **All** wiring and installation should meet local, state and national electrical codes.
- <sup>5</sup> **Install** correct lamp type and wattage.



#### MOUNTING INSTALLATION



#### TYPICAL CONFIGURATION TO POLE MOUNTING OPTION



#### TYPICAL CAST WALL BRACKET MOUNTING CONFIGURATION

#### 1. (CAST BRACKET INSTALLATION)

Remove the fixture from the box and remove the wall plate by loosening (2) 1/4-20 set screws from the bottom of the cast cover. Secure the wall plate to the wall with (4) 3/8 bolts or anchor bolts (hardware by others). (See step 3) Then reinstall the unit by mounting it over the wall plate and retightening the bottom set screws (See wall mounting detail).

#### 2. (CONCEALED ARM INSTALLATION)

Remove the fixture from the box and remove (2) 3/8 hex bolts from the back of the unit and throw away. Open the arm kit and install the 3/8" all-thread rods with the crimped end toward the unit as shown on the arm detail. Apply the gasket to the unit, slide the arm over the rods and feed the wires through. Slide the rods into the pole and tighten the nuts inside the pole using a flat washer, lock washer and nut.

3. Make power and ground connections using UL approved connectors at the top of the pole section.

4. Open the door by loosening the (2) captive screws at the door. Swing the door down. Install the correct lamp, close the door, and retighten the captive screws.