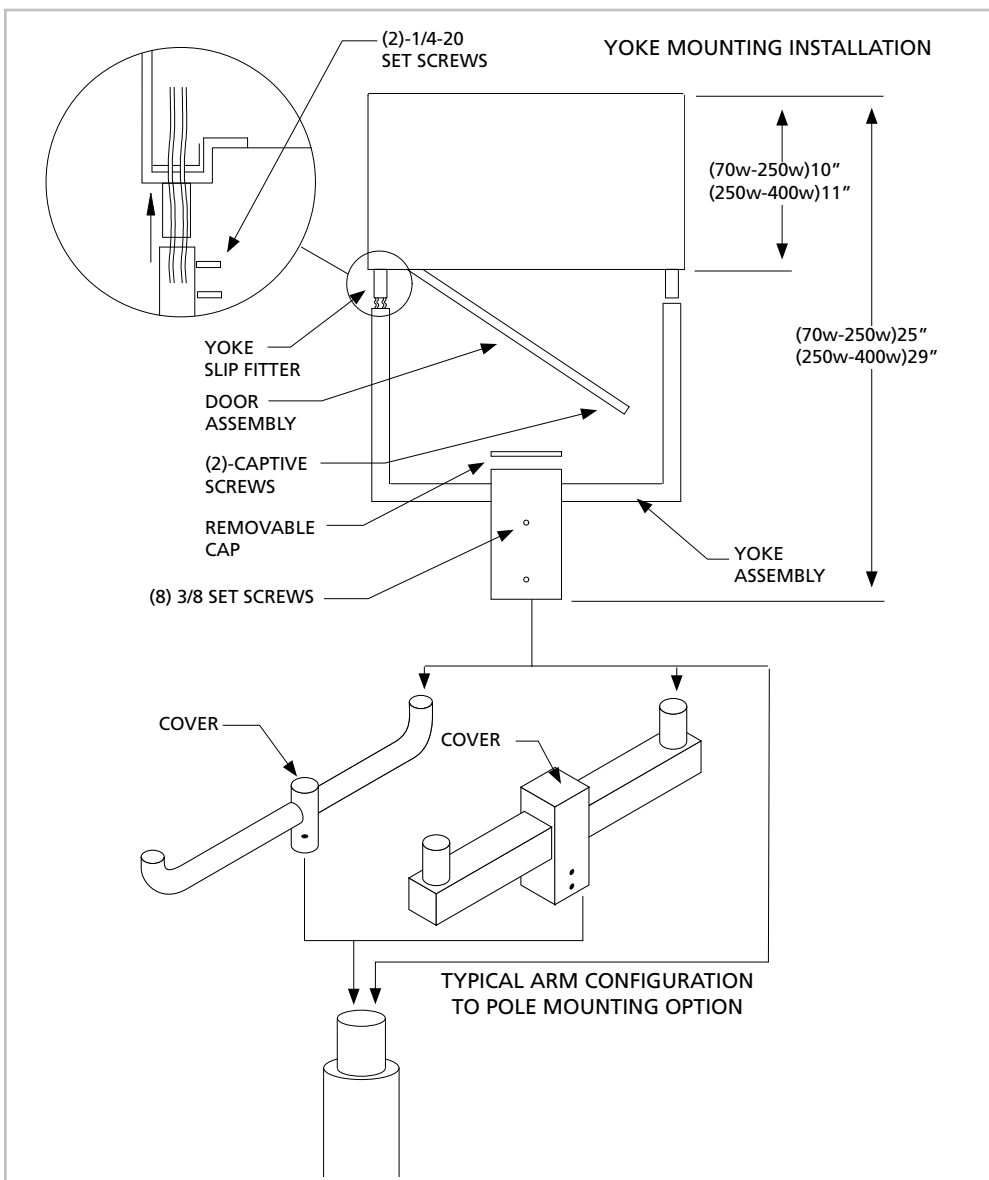


INSTALLATION SHEET

Safety, Warnings and Suggestions

- ¹ **Care** should be taken not to position fixtures in locations where bare skin can come into contact with the potentially high temperatures on the lens.
- ² **Make** sure that electrical power is disconnected before any work is performed.
- ³ **All** gaskets and sealing surfaces must be kept clean during installation.
- ⁴ **All** wiring and installation should meet local, state and national electrical codes.
- ⁵ **Install** correct lamp type and wattage.



1. (YOKE INSTALLATION)

Remove the fixture and yoke assembly from the box. Install the fixture to the 2 3/8" O.D. tenon on the pole or arm assembly. Secure the fixture to the tenon with the (8) set screws provided with the unit.

2. Make power and ground connections using UL approved connectors at the yoke splice compartment and/or at the top of the pole section.

3. Open the door by loosening the (2) captive screws at the door. Swing the door down. Install the correct lamp, close the door and retighten the captive screws.

Note: If fixture must be removed from yoke assembly, loosen (4) 1/4-20 set screws on yoke arm (See circle detail). Reassemble in same fashion.