

Building Mount

Corridor

Walkways

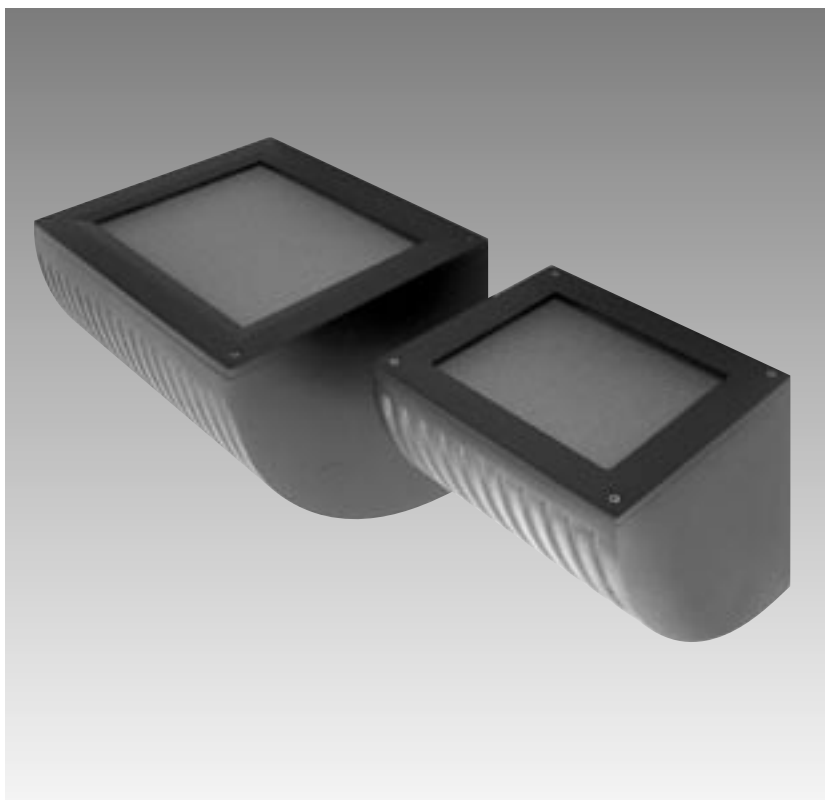
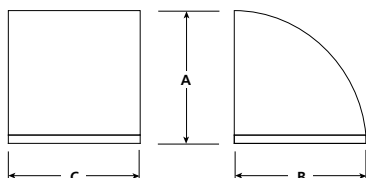
Accent

Building Entrances



Luminaire Dimensions

Luminaire	A	B	C
BL-80	9"	8-3/4"	9-3/4"
BL-81	12"	12-1/2"	14-1/2"



Specifications



Certifications

The fixture shall be ETL and CETL listed for wet location. Also meets IP65 standard.

Ballast Housing

Cast aluminum.

Lens Frame

Cast aluminum mounted to ballast housing with stainless steel screws.

Lens

The lens shall be clear tempered prismatic glass (BL-80).
The lens shall be clear tempered glass (BL-81).

Reflector

The reflector shall be an adjustable (40°) assymetric reflector (BL-81). Optional spot and flood reflectors available.

Up/Down Mounting

Each fixture can be mounted in an upward or downward orientation.

Finish

BK-BZ-WH-GR-GY-NA baked enamel standard, other colors available.

Product Order Guide

Series	Max Watts	Lamp Type	Voltage ¹	Lens	Finish ¹	Options
BL-80	42 CFT	CFT ²	120	PG Prismatic Tempered Glass	BK Black	CG Clear Tempered Glass
	70 HPS	E-17	208		BZ Bronze	
	70 MH	E-17	240		WH White	
			277		GR Green	
BL-81	175 MH	E-17		CG Clear Tempered Glass	NA Natural Aluminum	PG Prismatic Tempered Glass
	150 HPS	E-17			GY Gray	
	18 LPS	T17			CC Custom Color	
	(2) 42 CFT	CFT ²				
						ADJ Adjustable Assymetric
						SPT Spot 1V1H
						FLD Flood 3V3H
						EMG Emergency battery Backup

¹ Consult factory for other colors and voltages

² CF = single biax, CFQ = double biax, CFT = triple biax

PROJECT

FIXTURE TYPE

CATALOG#