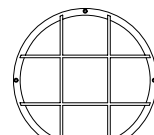


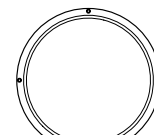
## INSTALLATION SHEET

### Safety, Warnings and Suggestions

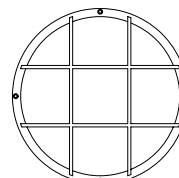
- <sup>1</sup> **Care** should be taken not to position fixtures in locations where bare skin can come into contact with the potentially high temperatures on the lens.
- <sup>2</sup> **Make** sure that electrical power is disconnected before any work is performed.
- <sup>3</sup> **All** gaskets and sealing surfaces must be kept clean during installation.
- <sup>4</sup> **All** wiring and installation should meet local, state and national electrical codes.
- <sup>5</sup> **Install** correct lamp type and wattage.



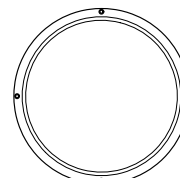
BL-36



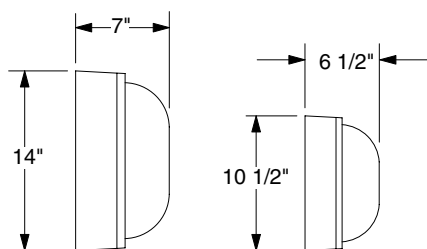
BL-37



BL-38



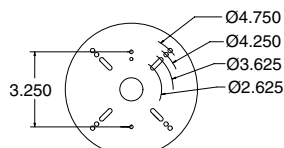
BL-39



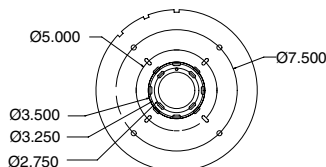
BL-38/39

BL-36/37

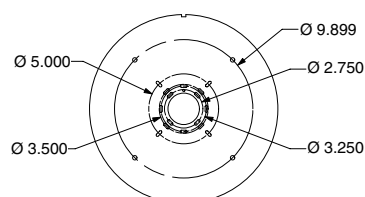
TYPICAL FIXTURE DIMENSIONS



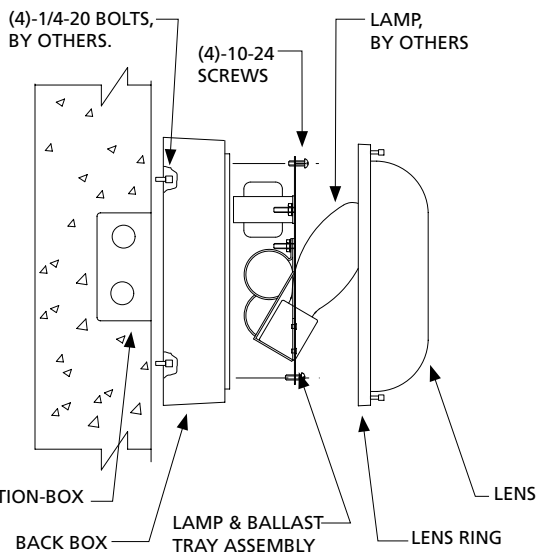
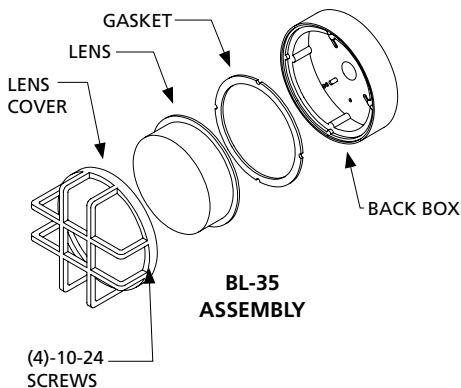
BL-35  
MOUNTING DETAIL



BL-36/37  
MOUNTING DETAIL



BL-38/39  
MOUNTING DETAIL



TYPICAL WALL INSTALLATION

1. Remove the fixture from the box. Remove the lens and lens ring by loosening (4)-10-24 cap screws. Remove the ballast tray assembly by loosening (4)-10-24 screws.

1A. (BL-35 ONLY)

Remove the fixture from the box. Remove the lens and lens ring by loosening (4)-8-32 Phillips head screws. Remove the ballast tray assembly by loosening (3)-10-24 screws.

2. Secure the back box to the wall with (4)-1/4-20 bolts or to the junction box with 8-32 screws, hardware by others. (BL-35 use 8-32 screws as required) Make power and ground connection using UL approved connectors at the Junction-box (J-box by others), Reinstall the ballast tray with the (4)-10-24 screws provided.

3. (LAMP INSTALLATION)

Install the correct lamp type and wattage. Reinstall the lens and lens ring. Tighten the (4)-10-24 cap screws, (for the BL-35 use the phillips head screws.