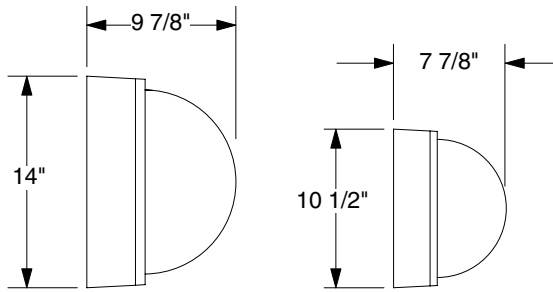
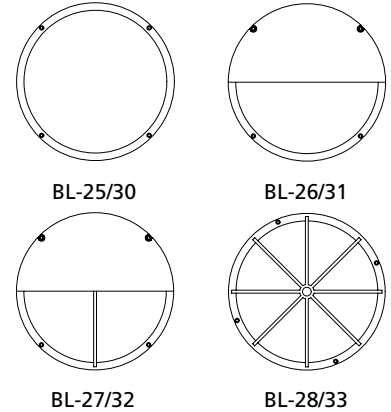


INSTALLATION SHEET

Safety, Warnings and Suggestions

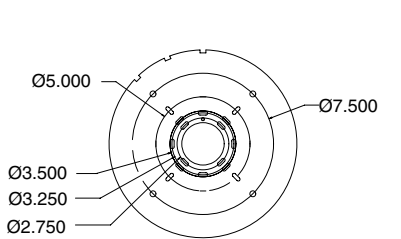
- ¹ *Care* should be taken not to position fixtures in locations where bare skin can come into contact with the potentially high temperatures on the lens.
- ² *Make* sure that electrical power is disconnected before any work is performed.
- ³ *All* gaskets and sealing surfaces must be kept clean during installation.
- ⁴ *All* wiring and installation should meet local, state and national electrical codes.
- ⁵ *Install* correct lamp type and wattage.



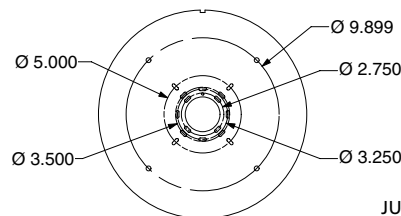
BL-30 THRU 33

BL-25 THRU 28

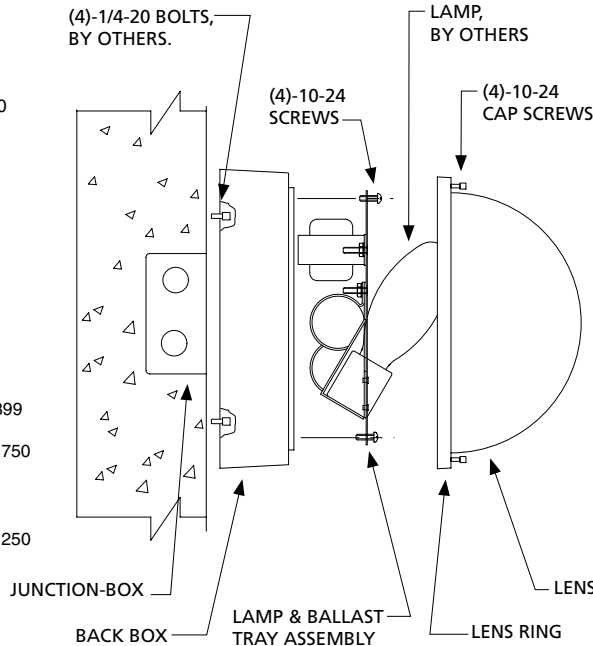
TYPICAL FIXTURE DIMENSIONS



**BL-25 THRU 28
MOUNTING DETAIL**



**BL-30 THRU 33
MOUNTING DETAIL**



TYPICAL WALL INSTALLATION

1. Remove the fixture from the box. Remove the lens and lens ring by loosening (4)-10-24 cap screws. Remove the ballast tray assembly by loosening (4)-10-24 screws.
2. Secure the back box to the wall with (4)-1/4-20 bolts or to the junction box with 8-32 screws, hardware by others. Make power and ground connection using UL approved connectors at the Junction-box (J-box by others), Reinstall the ballast tray with the (4)-10-24 screws provided
3. (LAMP INSTALLATION)
Install the correct lamp type and wattage. Reinstall the lens and lens ring. Tighten the (4)-10-24 cap screws.

BL