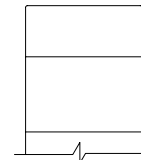


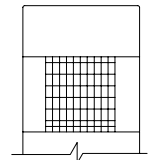
INSTALLATION SHEET

Safety, Warnings and Suggestions

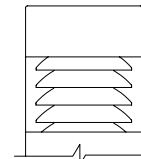
- ¹ **Care** should be taken not to position fixtures in locations where bare skin can come into contact with the potentially high temperatures on the lens.
- ² **Avoid** installing fixtures in locations where water collects and stands for prolonged periods.
- ³ **Make** sure that electrical power is disconnected before any work is performed.
- ⁴ **All** gaskets and sealing surfaces must be kept clean during installation.
- ⁵ **All** wiring and installation should meet local, state and national electrical codes.
- ⁶ **Install** correct lamp type and wattage.



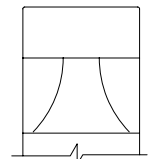
LL-04/05



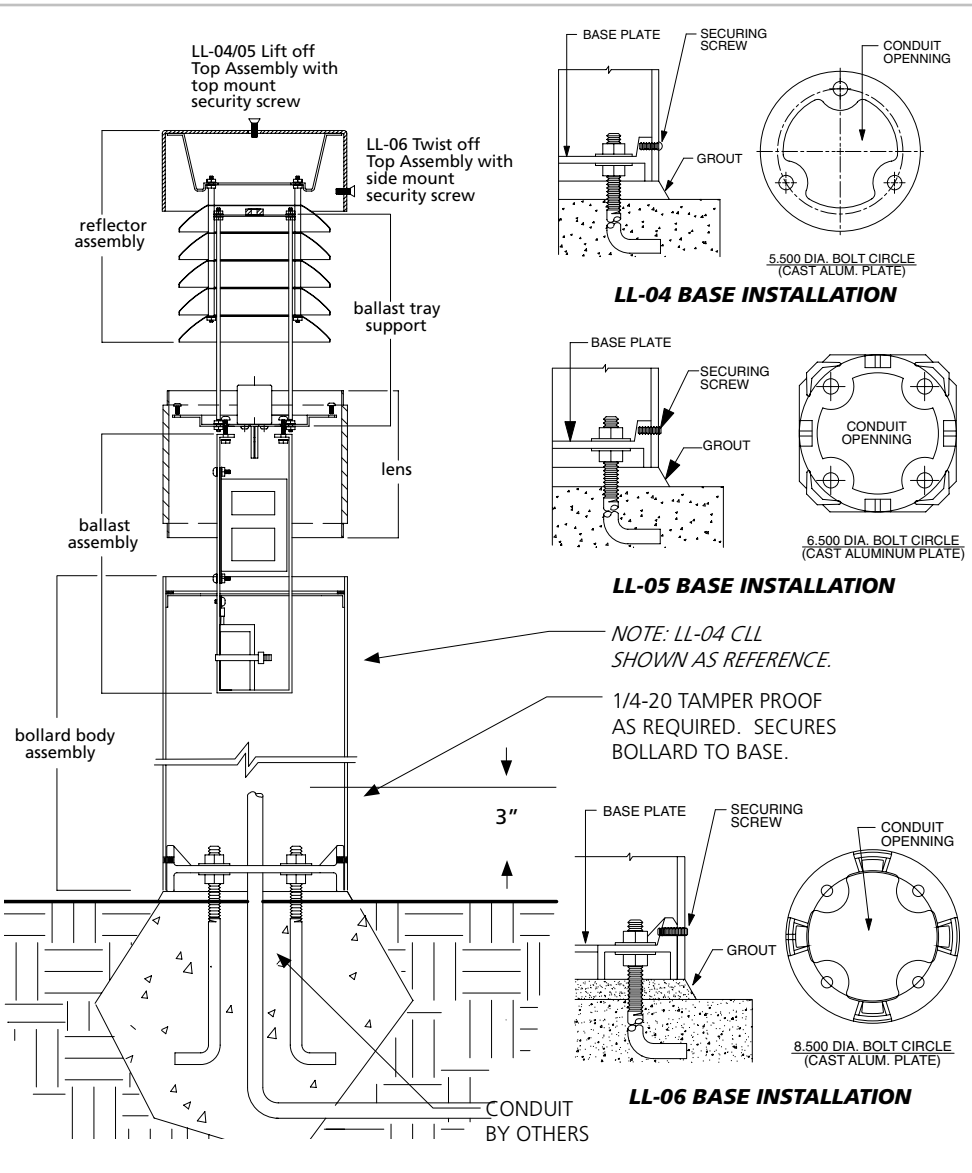
LL-04/05 CLF



LL-04/05/06 CLL



LL-04/05/06 CLR

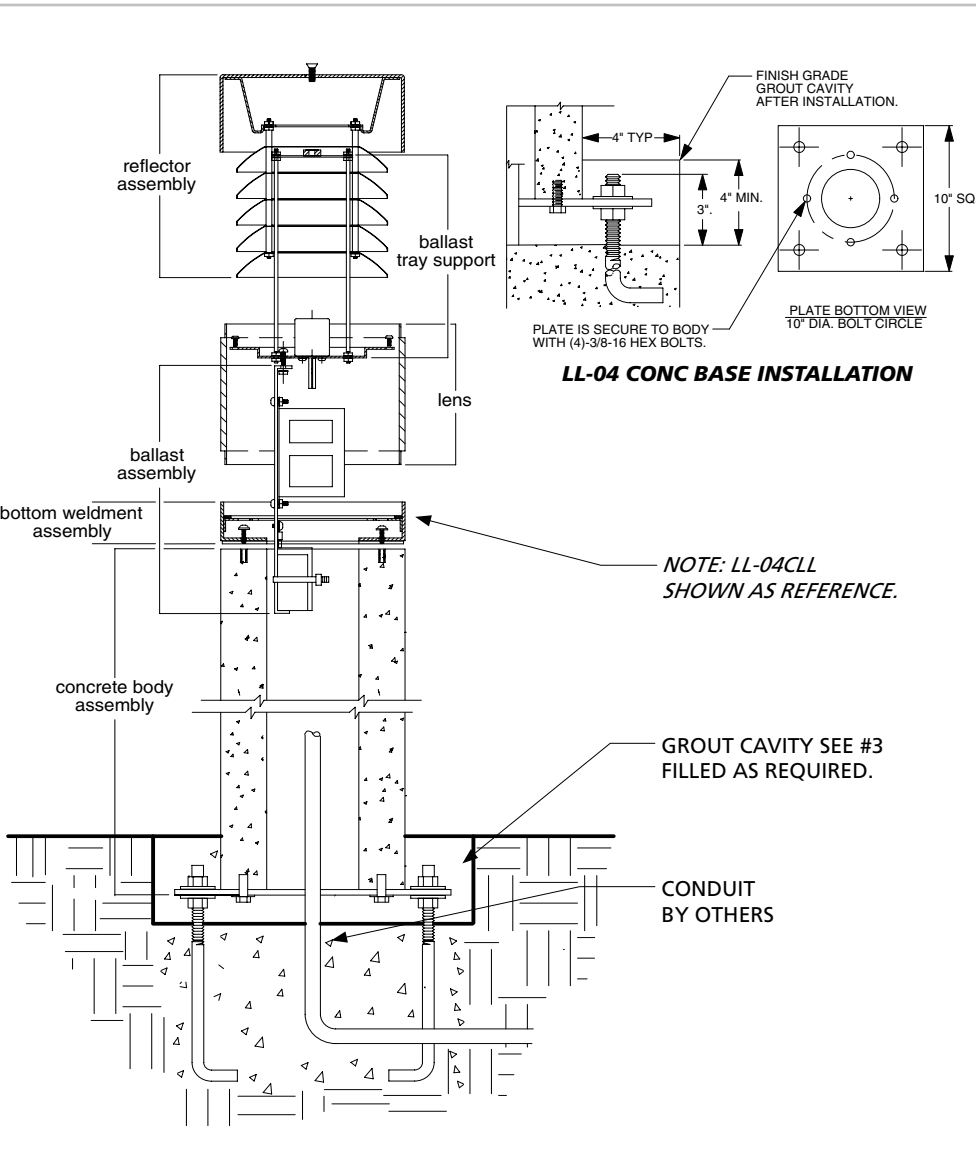
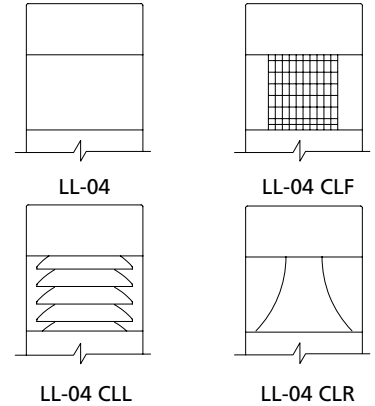


1. Prepare the site with adequate excavation and install the anchor bolts as per factory supplied template.
2. Remove the bollard from base by removing (securing bolts). Install the base to anchor bolts and level.
3. Remove the top/reflector assembly, the lens and the ballast tray support from the fixture housing by loosening the top flat head screw (LL-04 and LL-05) or side mount pan head security screw (LL-06).
4. Take the bollard body assembly and install over the cast base and secure the body with the 1/4-20 tamper proof screws.
5. Replace the ballast tray support and make power and ground connection using UL approved connectors. At this time install the lamp.
6. LL-04/LL-05. Replace the lens and the top/reflector assembly and secure with the 1/4-20 flat screw. **NOTE: MAKE SURE BEFORE INSTALLING THE LENS, THAT THE GASKET IS PROPERLY SEATED.**
6. LL-06. Replace the lens and the top/reflector assembly and secure with the 1/4-20 pan head security screw.

INSTALLATION SHEET

Safety, Warnings and Suggestions

- ¹ **Care** should be taken not to position fixtures in locations where bare skin can come into contact with the potentially high temperatures on the lens.
- ² **Avoid** installing fixtures in locations where water collects and stands for prolonged periods.
- ³ **Make** sure that electrical power is disconnected before any work is performed.
- ⁴ **All** gaskets and sealing surfaces must be kept clean during installation.
- ⁵ **All** wiring and installation should meet local, state and national electrical codes.
- ⁶ **Install** correct lamp type and wattage.



1. Prepare the site with adequate excavation and install the anchor bolts as per factory supplied template.
2. With the concrete bollard already at the job site, install the bollard to anchor bolts and level.
3. Fill in the grout cavity as required after the concrete body has been properly secured.
4. Remove the fixture from the package and remove the reflector assembly, the lens and the ballast tray support from the bottom weldment assembly by loosening the top flat head screw.
5. Now install the bottom weldment assembly to the top of the bollard with (4)-10-24 screws provided.
6. Install the ballast tray support and make power and ground connection using UL approved connectors. At this time install the lamp.
7. Replace the lens and the reflector assembly with the 1/4-20 flat screw. NOTE: MAKE SURE BEFORE INSTALLING THE LENS, THAT THE GASKET IS PROPERLY SEATED.