

Low Level Lighting
8" Square Aluminum Bollard
Landscape Accent
Walkways
Building Entrances
Planter Areas
Parks
Parking Lots



Specifications



- Certifications** The fixture shall be ETL and CETL listed for wet location.
- Light Distribution** The LL-05 luminaire shall meet the specified light distribution and footcandle levels with an internal optical system.
- Assembly** The fixture shall be factory pre-wired, with high temperature wire completely assembled and tested prior to shipment. Field installation to mounting base shall be accomplished without having to remove or disassemble any fixture components. Fixture shall be ETL listed "suitable for wet locations."
- Housing** The fixture housing shall be constructed from 1/8" aluminum sheet 5052 alloy.
- Ballast** Ballast shall be readily accessible, removable, and insulated. Quick disconnects are standard.
- Lens** Clear or opal 1/4" thick acrylic or polycarbonate.
- Optical Assembly** The specified optical system shall be of all non-ferrous components, mounted and removable as a one-piece self-contained unit.
- Finish** BK-BZ-WH-GR-GY-NA baked enamel standard, other colors available. Anodized finish also available.

PROJECT
FIXTURE TYPE
CATALOG#

2930 South Fairview Street
 Santa Ana, CA 92704
 Phone: 714 668 3660
 Fax: 714 668 1107
 allighting@earthlink.net
 http://www.allighting.com

LL-05

Product Order Guide

Series	Max Watts	Lamp Type	Voltage ¹	Optical System	Overall Height	Finish ¹	Options
LL-05	35 LPS	T17	120	O	30"	BZ Bronze	F Fusing
	100 MH	E-17	208	CLF	36"	BK Black	FF Double Fusing
	100 HPS	E-17	240	CLR ³	42"	WH White	PL Polycarbonate Lens
	26 CFQ	CFQ ²	277	CLL		GR Green	HSS House Side Shield
	42 CFT	CFT ²				NA Natural aluminum	EMG Emergency Battery Backup
	13 CF	CF ²				GY Gray	HDBP Heavy Duty Base plate
						CC Custom Color	
						BAA Clear Anodized	
						BZA Bronze Anodized	
						BKA Black Anodized	

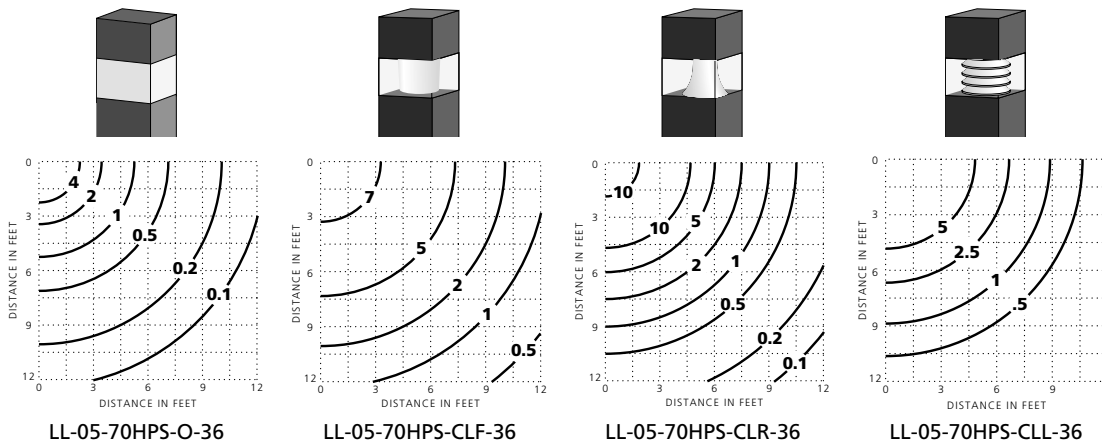
¹ Consult factory for other colors and voltages

² CF = single biax, CFQ = double biax, CFT = triple biax

³ 4 CLR does not accept 35LPS lamp.

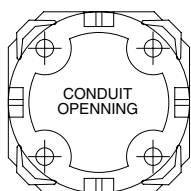
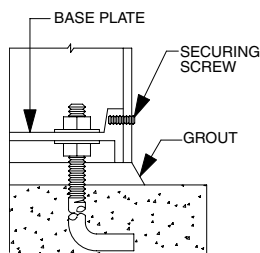
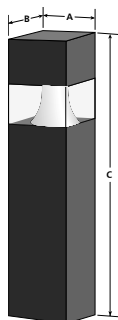
Example: LL-05-70HPS-E17-120-CLR-42-BZ-PL

Photometric Data



Luminaire Dimensions

Luminaire	A	B	C	Weight
LL-05	8"	8"	30"	29#
			36"	32#
			42"	34#



Anchor Bolt Size
 (4) 1/2" x 12" x 3"