

Specification Grade

Sign Accent

Building Entrances

Doorways

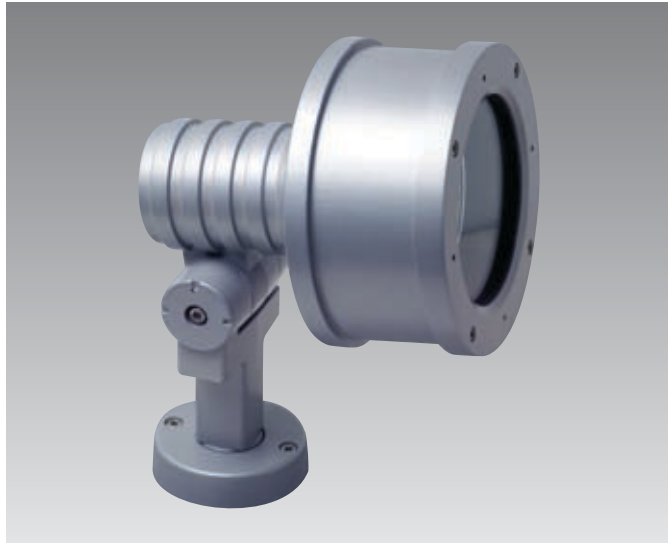
Pedestrian Areas

Walkways

Building Accent

Tree Lighting

Landscape Areas



OTTEP
CIELLO

Specifications



Certifications

ETL and CETL listed for wet location and meets IP65 standard, dust-tight and water-jet proof.

Fixture Housing/Knuckle

The housing and the DK (standard) and CK (optional) knuckles are constructed of die cast aluminum castings with a minimum 1/8" thickness. Both knuckles come with 1/2" NPT threads for mounting to standard junction boxes or with an additional cast swivel for mounting to the available ballast housings. The knuckles provide 120° vertical (30° down, 90° up) and 360° horizontal adjustability.

Lens

Clear tempered 3/16" thick, sealed to lens frame with injection molded silicone gasket.

Lens Frame

Die cast aluminum minimum thickness of 1/8". Attached to fixture housing with four captive stainless steel 8-32 socket cap screws.

Adjustable Reflectors

Spun aluminum highly specular Alzak™ finish for either type SPT spot or FLD flood for T6, T4 or BT5 lamps. Both reflectors are provided with an adjustable spot to flood external aiming mechanism.

Lamp Holder

Porcelain 4kv pulse rated medium base for HID and Incandescent lamp sources.

Options

Color Filter (CF), Medium Visor (MV), Snoot (SN), Linear Spread Lens (LSL), Prismatic Spread Lens (PSL), Internal Hex Cell Louver (HL), Classic Knuckle (CK).

Finish

BK-BZ-WH-GR-GY-NA baked enamel paint standard. Powder coat and custom colors available on request.

Safety

Caution: Care should be taken when specifying fixtures for use in pedestrian areas to avoid problems that may be caused by high lens and fixture temperatures. Consult factory for more information.

Warning

Caution: Care should be taken not to install in-ground and ground mounted fixtures in areas where water can stand for prolonged periods of time. Sufficient drainage must be provided to avoid problems. Consult factory for more information.

PROJECT
FIXTURE TYPE
CATALOG#

Product Order Guide

Series	Max Watts	Lamp Type	Voltage ¹	Optics	Finish ^{2,3}	Options
SL-51	13CF	CF	120	SPT (T6/T4/BT5)	BK Black	LSL Linear Spread Lens
	26CFQ	CFQ	208	FLD (T6/T4/BT5)	BZ Bronze	PSL Prismatic Spread Lens
	32CFT ⁴	CFT	240	FLD 6H6V (CFT)	WH White	SN ⁸ Snoot
			277		GR Green	MV ⁸ Medium Visor
	20MH ⁴	BT5			NA Natl Aluminum	GF Glass Color Filter
	39MH ⁴	PAR20			GY Gray	HL Internal Hex Cell Louver
	35MH ⁴	R111			CC Custom Color	DK ⁷ Designer Knuckle
	70MH ⁴	T6				CK Classic Knuckle
	70MH ⁴	T4				JBS Junction Box Square
	70MH ⁴	PAR30				JBR ⁵ Junction Box Round
						JBRTM Tree Mount Junction Box
	50INC	PAR20	120			STNM Stanchion Mount
	50INC	AR111	120			LP Plastic Post
	75INC	PAR30	120			CBH Composite Ballast Housing
	75INC	MR16	120/277/12			RCBH Remote CBH
	100INC	T4mini	120			RWMS ⁵ Remote WMS
						WMR Wall Mount Recessed
						WMS ⁵ Wall Mount Surface
3X1WLED ⁶ MR16 120/277 2, 4, 10, 16, 25, 50, 80, 2x70, 10x60						UD Up/Down Mount

¹ Consult factory for other voltages.

² Consult factory for other finishes.

³ Baked enamel paint is standard, powder coat is optional.

⁴ Requires ballast enclosure.

⁵ Specify Junction Box Mounting or Surface Conduit Connection.

⁶ Specify Color Red, Blue, Green, Amber, White (5000°K).

⁷ The Designer Knuckle (DK) is provided as standard.

⁸ Care should be taken if these options are used in an up aiming orientation as debris can collect inside and obstruct the light and cause thermal problems. Consult factory for more information.

CF=single biax, CFQ = double biax, CFT = triple biax

Example: SL-51-70MH-T6-277-SPT-BK-CBH

Luminaire Dimensions

Luminaire	A		B		C		D		E		F		G		Weight	
	Inch	mm	Inch	mm	Inch	mm	Inch	mm	Inch	mm	Inch	mm	Inch	mm	lbs.	kg
SL-51	7.60	193	6.50	165	10.28	261									7	3.2
SL-51-CBH	7.60	193	6.50	165	10.28	261	12.00	305							15	6.8
SL-51-CBH-MV	13.13	336	6.50	165	10.28	261	12.00	305							16	7.3
SL-51-CBH-SN	14.13	359	6.50	165	10.28	261	12.00	305							16	7.3
WMR									6.38	162	8.38	213	3.50	89	12.5	5.7
WMS									6.38	162			3.50	89	12.5	5.7
SL-51-UD	16.25	413			10.28	261			10.38	264	6.00	152	3.50	89	24	10.9

