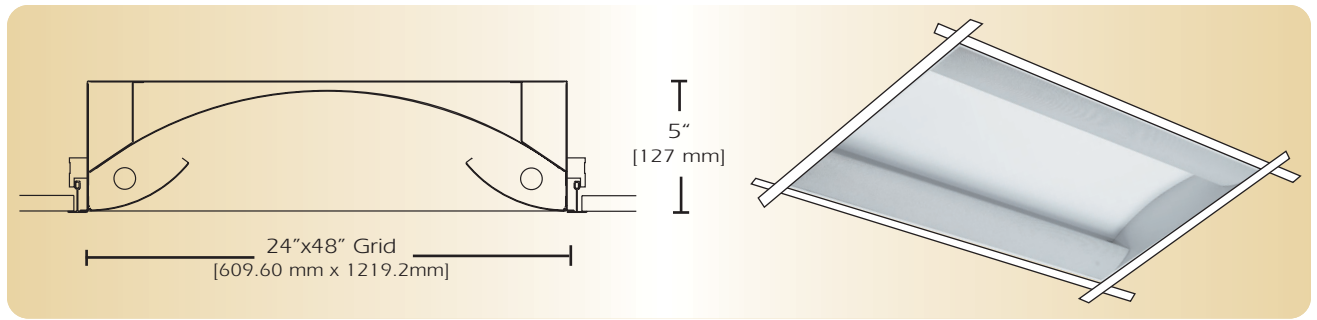


New Age Series

NAS-PS



TYPE _____

FEATURES

The NAS-PS is one variation of a complete group of Recessed Direct luminaires featuring two side metal perforated lamp shields with an acrylic overlay to obscure direct lamp image. The two side perforated lamp shields are positioned above the ceiling plane. Lamp output is distributed over a computer designed reflector system to provide soft glare-free illumination. The NAS-PS series can be used in any installation where high performance and comfortable lighting are required.

SPECIFICATIONS

- Housing:** Die formed 20-gauge cold rolled steel finished in baked white enamel. Housing has an access plate on top with two 7/8" diameter knockouts.
- Shielding:** Die formed 20 gauge perforated steel lamp shields has a 41% opening with white acrylic .020 translucent overlay. The hinged lamp shield is removable for easy lamp access.
- Reflector:** Die formed .020 aluminum 90% minimum reflectivity finished in low glare matte baked white enamel.
- Electrical:** Ballast is electronic, high power factor, thermally protected class P, sound rated A, with less than 20% total harmonic distortion. The minimum number of ballasts will be used unless otherwise specified.
- Mounting:** Standard installation is 2 x 4 exposed inverted T-bar ceiling. Optional trims are also available for installations in miniature grid, drywall or plaster ceiling. For mounting detail information consult factory. Four support brackets are included with each fixture.
- Finish:** Fixture housing and steel components are finished in baked white enamel applied over a five-stage pretreatment process.
- Lamps:** Fixtures are provided for use with 40 or 50 watt compact fluorescent or 32 watt T8 lamps. (Supplied by Others)
- Certification:** Luminaires are U. L. Listed, C.S.A. certified and are Union Made in the United States of America I.B.E.W.

ORDERING GUIDE

| MODEL NO. | LAMPS | SIZE | MOUNTING | FINISH | VOLTAGE | OPTIONS |
|---------------|--|----------------|--|--|----------------------------|--------------------------|
| NAS-PS | - | 24 | - | - | - | - |
| NAS-PS | 440-CF 450-CF 232-T8 432-T8 | 24= 2X4 | G= Standard Lay-in Grid MG= Miniature Grid F= Flanged | W= White CC= Custom Color | 120v 277v | See Options Below |
| | O= Other Specify | | | | | |

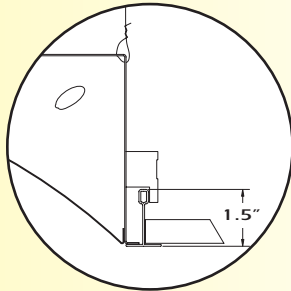
Example: **NAS-PS-232T8-24-G-W-277V**
New Age Series with two perforated lamp shields two 32 watt T8 fluorescent 2x4 grid fixture finished in baked white enamel 277 volt electronic ballast less than 20% harmonics.

OPTIONS

- E10=** Electronic ballast, high power factor, thermally protected class P, sound rated A, <10% total harmonic distortion
- DIM=** Dimming Ballast
- EPC=** Emergency Battery Pack
- EMC=** Emergency Circuit
- TCW=** Two Circuit Wiring
- ARS=** Air return system
- FWH=** Flexible wiring harness
- OTH=** See Accessory Section for other options available

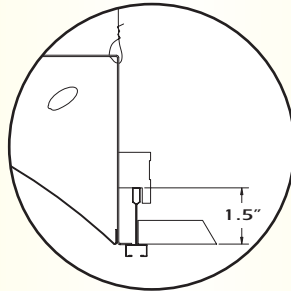
LINEAR SECTIONS AND SUSPENSION LOCATION

MOUNTING "G"



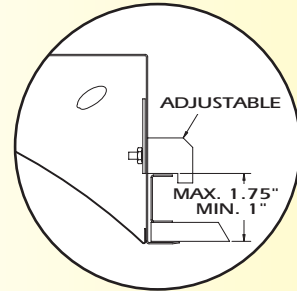
STD. 1 1/2" INVERTED "T" BAR

MOUNTING "MG"



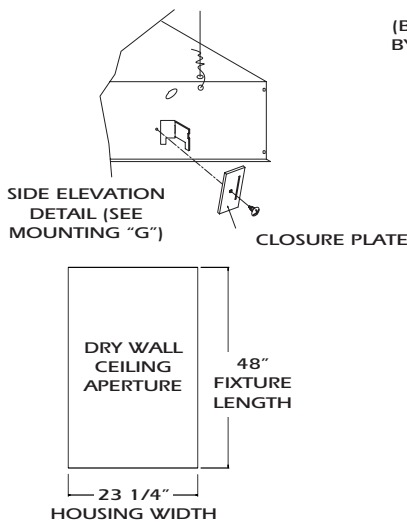
1 1/2" MINIATURE GRID CEILING

MOUNTING "F"

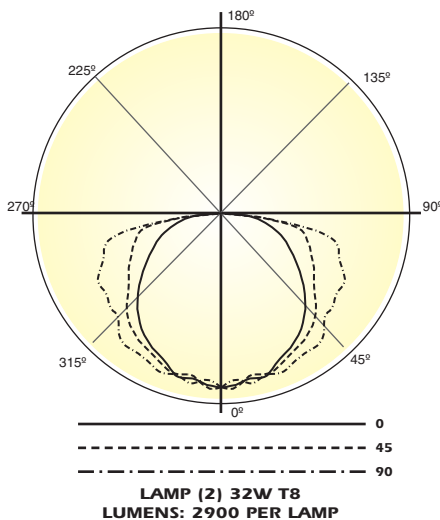


PLASTER OR DRY WALL CEILING

INSTALLATION PREPARATION



PHOTOMETRY



Candela Distribution:

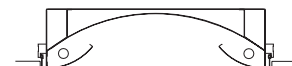
| Vert. Angle | 0 | 22.5 | 45 | 67.5 | 90 |
|-------------|------|------|------|------|------|
| 0 | 851 | 851 | 851 | 851 | 851 |
| 5 | 866 | 834 | 844 | 820 | 838 |
| 10 | 816 | 817 | 800 | 802 | 878 |
| 15 | 808 | 836 | 799 | 820 | 820 |
| 20 | 770 | 793 | 799 | 810 | 841 |
| 25 | 736 | 758 | 767 | 794 | 820 |
| 30 | 705 | 718 | 762 | 775 | 802 |
| 35 | 668 | 694 | 737 | 768 | 798 |
| 40 | 635 | 628 | 701 | 752 | 805 |
| 45 | 560 | 596 | 654 | 700 | 732 |
| 50 | 501 | 531 | 598 | 670 | 721 |
| 55 | 438 | 489 | 542 | 643 | 699 |
| 60 | 402 | 422 | 512 | 648 | 696 |
| 65 | 330 | 386 | 481 | 609 | 670 |
| 70 | 291 | 347 | 460 | 566 | 625 |
| 75 | 232 | 304 | 418 | 546 | 604 |
| 80 | 175 | 252 | 370 | 449 | 464 |
| 85 | 108 | 149 | 176 | 166 | 166 |
| 90 | 20.5 | 26.7 | 27.1 | 29.4 | 29.5 |

Optical Distribution:
100% Direct

Coefficients of Utilization - Zonal Cavity Method:

pfc = 0.20

| | .8 | .7 | .5 | .3 | .1 | 0 |
|-----|----|----|----|----|----|----|
| pcc | .8 | .7 | .5 | .3 | .1 | 0 |
| pw | .7 | .5 | .3 | .1 | .5 | .3 |
| RCR | .1 | .7 | .5 | .3 | .1 | .5 |
| 0 | 66 | 66 | 66 | 66 | 65 | 65 |
| 1 | 59 | 55 | 52 | 50 | 57 | 54 |
| 2 | 52 | 47 | 42 | 39 | 51 | 46 |
| 3 | 47 | 40 | 35 | 31 | 46 | 39 |
| 4 | 43 | 35 | 30 | 26 | 42 | 35 |
| 5 | 39 | 31 | 26 | 22 | 38 | 31 |
| 6 | 36 | 28 | 22 | 18 | 35 | 27 |
| 7 | 33 | 25 | 20 | 16 | 32 | 25 |
| 8 | 31 | 23 | 18 | 14 | 30 | 22 |
| 9 | 29 | 21 | 16 | 13 | 28 | 20 |
| 10 | 27 | 19 | 14 | 11 | 26 | 19 |



Total Luminaire Optical Efficiency = 56.0%