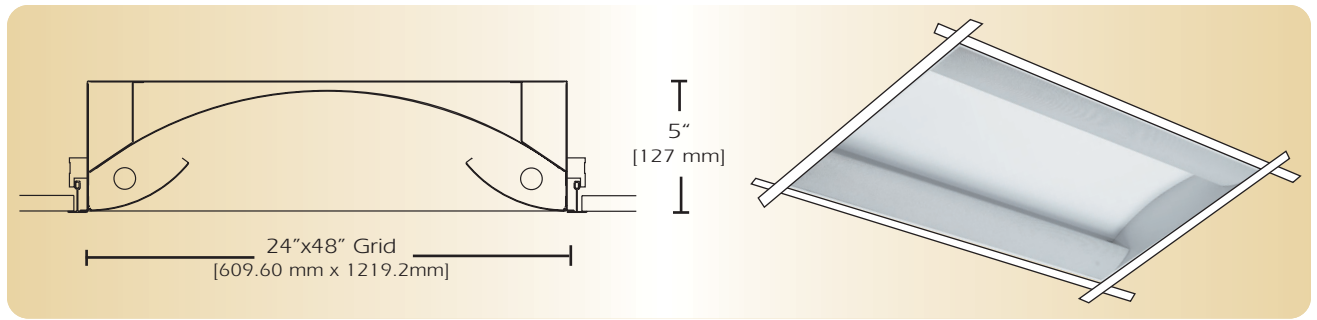


New Age Series

NAS-PS



TYPE _____

FEATURES

The NAS-PS is one variation of a complete group of Recessed Direct luminaires featuring two side metal perforated lamp shields with an acrylic overlay to obscure direct lamp image. The two side perforated lamp shields are positioned above the ceiling plane. Lamp output is distributed over a computer designed reflector system to provide soft glare-free illumination. The NAS-PS series can be used in any installation where high performance and comfortable lighting are required.

SPECIFICATIONS

- Housing:** Die formed 20-gauge cold rolled steel finished in baked white enamel. Housing has an access plate on top with two 7/8" diameter knockouts.
- Shielding:** Die formed 20 gauge perforated steel lamp shields has a 41% opening with white acrylic .020 translucent overlay. The hinged lamp shield is removable for easy lamp access.
- Reflector:** Die formed .020 aluminum 90% minimum reflectivity finished in low glare matte baked white enamel.
- Electrical:** Ballast is electronic, high power factor, thermally protected class P, sound rated A, with less than 20% total harmonic distortion. The minimum number of ballasts will be used unless otherwise specified.
- Mounting:** Standard installation is 2 x 4 exposed inverted T-bar ceiling. Optional trims are also available for installations in miniature grid, drywall or plaster ceiling. For mounting detail information consult factory. Four support brackets are included with each fixture.
- Finish:** Fixture housing and steel components are finished in baked white enamel applied over a five-stage pretreatment process.
- Lamps:** Fixtures are provided for use with 40 or 50 watt compact fluorescent or 32 watt T8 lamps. (Supplied by Others)
- Certification:** Luminaires are U. L. Listed, C.S.A. certified and are Union Made in the United States of America I.B.E.W.

ORDERING GUIDE

MODEL NO.	LAMPS	SIZE	MOUNTING	FINISH	VOLTAGE	OPTIONS
NAS-PS	-	24	-	-	-	-
NAS-PS	440-CF 450-CF 232-T8 432-T8 O=Other Specify	24= 2X4	G= Standard Lay-in Grid MG= Miniature Grid F= Flanged	W= White CC= Custom Color	120v 277v	See Options Below

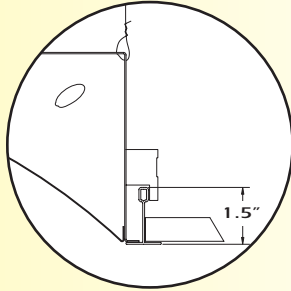
Example: **NAS-PS-232T8-24-G-W-277V**
New Age Series with two perforated lamp shields two 32 watt T8 fluorescent 2x4 grid fixture finished in baked white enamel 277 volt electronic ballast less than 20% harmonics.

OPTIONS

- E10=** Electronic ballast, high power factor, thermally protected class P, sound rated A, <10% total harmonic distortion
- DIM=** Dimming Ballast
- EPC=** Emergency Battery Pack
- EMC=** Emergency Circuit
- TCW=** Two Circuit Wiring
- ARS=** Air return system
- FWH=** Flexible wiring harness
- OTH=** See Accessory Section for other options available

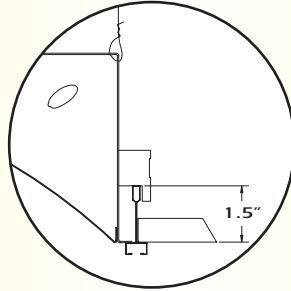
LINEAR SECTIONS AND SUSPENSION LOCATION

MOUNTING "G"



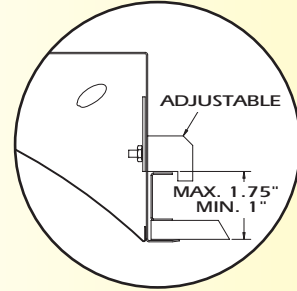
STD. 1 1/2" INVERTED "T" BAR

MOUNTING "MG"



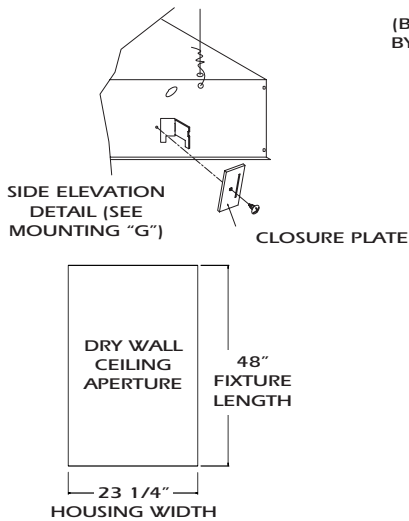
1 1/2" MINIATURE GRID CEILING

MOUNTING "F"

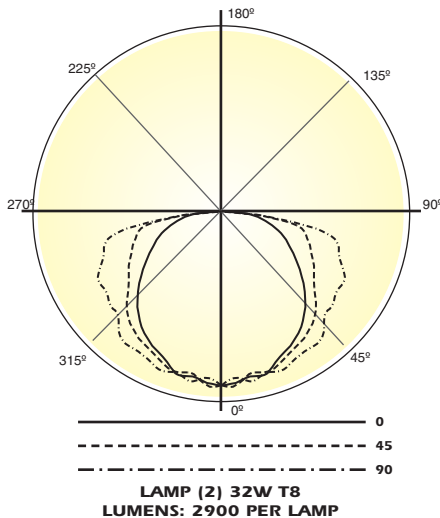


PLASTER OR DRY WALL CEILING

INSTALLATION PREPARATION



PHOTOMETRY



Candela Distribution:

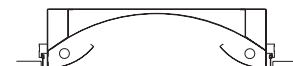
Vert. Angle	0	22.5	45	67.5	90
0	851	851	851	851	851
5	866	834	844	820	838
10	816	817	800	802	878
15	808	836	799	820	820
20	770	793	799	810	841
25	736	758	767	794	820
30	705	718	762	775	802
35	668	694	737	768	798
40	635	628	701	752	805
45	560	596	654	700	732
50	501	531	598	670	721
55	438	489	542	643	699
60	402	422	512	648	696
65	330	386	481	609	670
70	291	347	460	566	625
75	232	304	418	546	604
80	175	252	370	449	464
85	108	149	176	166	166
90	20.5	26.7	27.1	29.4	29.5

Optical Distribution:
100% Direct

Coefficients of Utilization - Zonal Cavity Method:

pfc = 0.20

	.8	.7	.5	.3	.1	0												
pcc	.8	.7	.5	.3	.1	0												
pw	.7	.5	.3	.1	.5	.3	.1	.5	.3	.1	0							
RCR																		
0	66	66	66	66	65	65	65	65	62	62	62	59	59	59	57	57	57	55
1	59	55	52	50	57	54	51	49	52	49	47	49	47	46	47	46	44	43
2	52	47	42	39	51	46	42	38	44	40	37	42	39	36	40	38	35	34
3	47	40	35	31	46	39	35	31	38	33	30	36	32	29	35	32	29	28
4	43	35	30	26	42	35	29	25	33	29	25	32	28	25	30	27	24	23
5	39	31	26	22	38	31	25	21	29	25	21	28	24	21	27	23	21	19
6	36	28	22	18	35	27	22	18	26	22	18	25	21	18	24	21	18	17
7	33	25	20	16	32	25	20	16	24	19	16	23	19	16	22	18	16	14
8	31	23	18	14	30	22	18	14	22	17	14	21	17	14	20	17	14	13
9	29	21	16	13	28	20	16	13	20	16	12	19	15	12	19	15	12	11
10	27	19	14	11	26	19	14	11	18	14	11	18	14	11	17	14	11	10



Total Luminaire Optical Efficiency = 56.0%