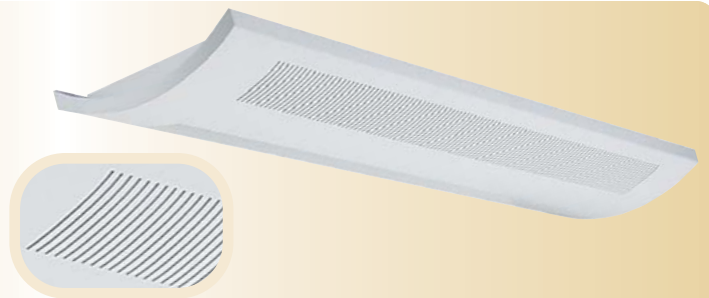
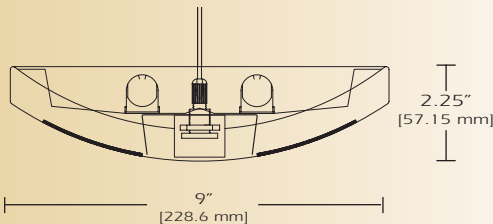


Stylelite (Steel)

STYS-DI-7



TYPE _____

FEATURES

The Stylelite is a low profile contemporary design direct and indirect fluorescent luminaire. The Stylelite is available in ten architectural design perforations and utilizes energy efficient T5 technology. The highly reflective specular reflector creates high efficiency optics. The Stylelite is available in suspended or wall-mounted applications. The steel luminaire is an excellent choice where affordability, design, and technology are required in a lighting system.

SPECIFICATIONS

Housing: One piece die formed 20-gauge cold rolled steel welded construction forming a 2 1/4" x 9" curved profile. Continuous rectangular pattern is 1 15/16" x 1/8" straight with white .020 translucent overlay. Finished end caps are laser cut 18-gauge cold rolled steel, welded with no exposed hardware or knockouts. Aligner brackets are provided to eliminate light leaks and for precision alignment of continuous rows.

Reflector: Die formed .025 specular reflector minimum 90% reflectivity.

Electrical: Ballast is electronic, high power factor, thermally protected class P, sound rated A, with less than 10% total harmonic distortion. The minimum number of ballasts will be used unless otherwise specified.

Mounting: Standard Installation is an adjustable self-locking aircraft cable assembly 48" x 3/32" in diameter with 5" canopy. One 16/4 SJT straight 54" cord is supplied with each power feed. Standard pendants are available in 24" lengths. See Accessories for additional mounting.

Finish: Fixture housing and steel components are finished in baked white enamel applied over a five stage pretreatment process.

Lamps: Fixtures are provided for use with one, two or three 28 watt T5 or one, two or three 54 watt T5 HO lamps. (Supplied by Others)

Certification: Luminaires are U. L. listed, C. S. A. certified and are Union Made in the United States of America. I.B.E.W.

ORDERING GUIDE

MODEL NO.	DIRECTION	SHIELDING	LAMPS	MOUNTING	LENGTH	FINISH	VOLTAGE	OPTIONS
STYS	DI	7						
STYS	DI=Direct/ Indirect	7=Rectangular Continuous	128T5 228T5 328T5 154T5 HO 254T5 HO 354T5 HO O=Other Specify	AC= Cable PD= Pendant WM= Wall Mount See Accessories	4= 4 ft 8= 8 ft for other, please enter row length (eg. 48=48ft)	W= White CC= Custom Color	120v 277v	See Options Below

Example: **STYS-DI-7-254T5HO-AC-4-W-277V**

Stylelite with continuous rectangular pattern with opal overlay for two 54 watt T5 HO lamps with two 48 inch aircraft cables and power feed four foot fixture finished in baked white enamel with 277v electronic ballast less than 10% total harmonic distortion.

OPTIONS

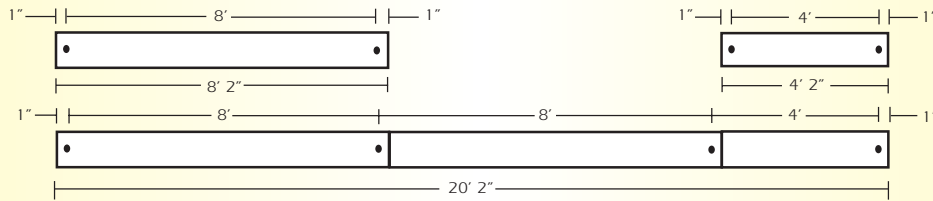
DIM=	Dimming Ballast
EPC=	Emergency Battery Pack
EMC=	Emergency Circuit
TCW=	Two Circuit Wiring
TDW=	Tandem Wiring
OTH=	See Accessories for other options available

Stylelite (Steel)

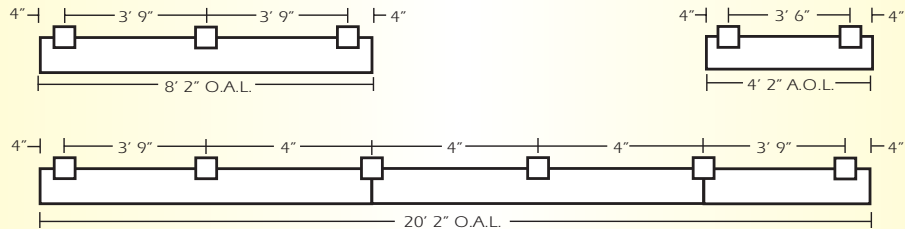
STYS-DI-7

LINEAR SECTIONS AND SUSPENSION LOCATION

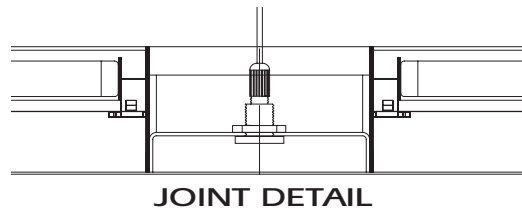
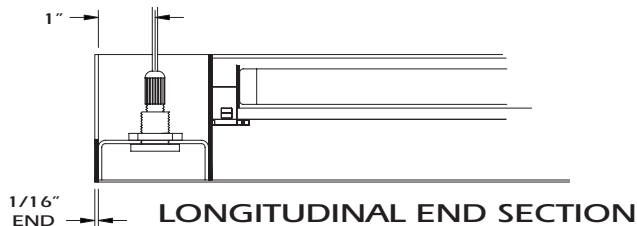
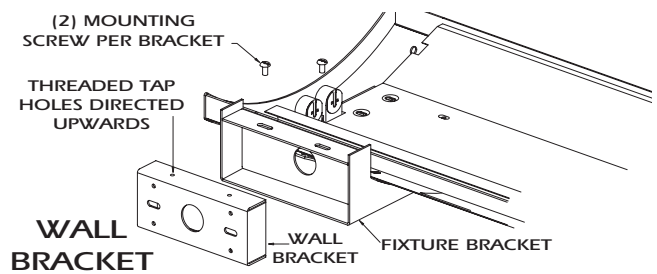
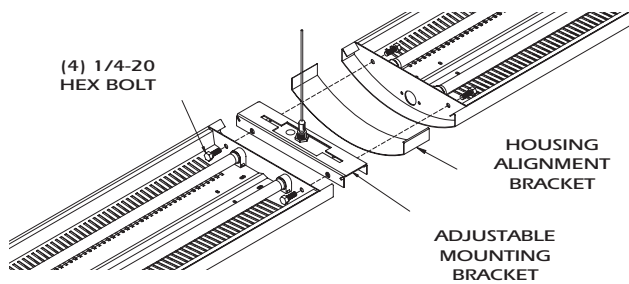
SUSPENSION MOUNTING



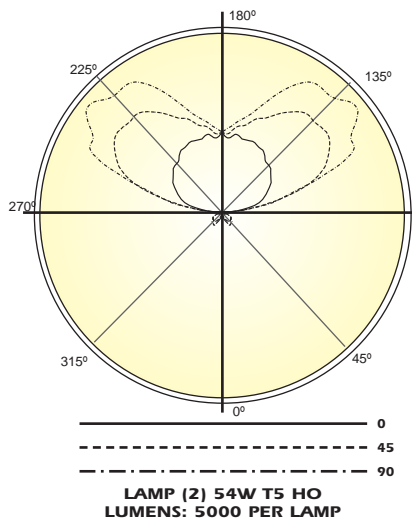
WALL MOUNTING



INSTALLATION PREPARATION



PHOTOMETRY



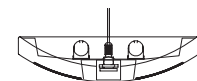
Candela Distribution:

Vert. Angle	0	22.5	45	67.5	90
0	0	0	0	0	0
5	0	3.35	11.7	17.8	6.70
15	1.13	20.6	59.5	94.9	110
25	2.07	61.1	129	174	197
35	9.37	76.1	186	241	233
45	11.4	108	206	217	222
55	13.6	131	172	182	169
65	10.7	109	126	105	85.7
75	10.8	64.9	29.7	2.53	0.000
85	7.02	7.88	21.3	27.4	25.6
95	120	303	315	299	291
105	353	927	1241	1146	1107
115	489	1203	1821	2160	2298
125	671	1356	2026	2511	2541
135	832	1349	2064	2375	2536
145	999	1220	1925	2336	2493
155	1119	1276	1610	1915	2029
165	1135	1252	1367	1500	1562
175	1137	1174	1204	1288	1294
180	1234	1234	1234	1234	1234

Coefficients of Utilization - Zonal Cavity Method:

pfc = 0.20

	.8			.7			.5			.3			.1			0		
pc	.7	.5	.3	.1	.7	.5	.3	.1	.5	.3	.1	.5	.3	.1	.5	.3	.1	0
pw																		0
RCR																		0
0	87	87	87	87	76	76	76	76	53	53	53	33	33	33	14	14	14	5
1	79	76	72	69	68	65	63	60	46	44	43	28	28	27	12	12	11	4
2	72	66	61	56	62	57	53	49	40	38	35	25	23	22	10	10	9	3
3	66	58	51	46	56	50	45	41	35	32	29	22	20	18	9	8	2	2
4	60	51	44	39	51	44	38	34	31	27	25	19	17	15	8	7	6	2
5	54	45	38	33	47	39	33	29	27	24	21	17	15	13	7	6	5	1
6	50	40	33	28	43	34	29	24	24	20	18	15	13	11	6	5	4	1
7	46	35	29	24	39	31	25	21	22	18	15	13	11	9	5	4	4	1
8	42	32	25	21	36	28	22	18	20	16	13	12	10	8	5	4	3	1
9	39	29	22	18	34	25	20	16	18	14	11	11	9	7	4	3	3	0
10	36	26	20	16	31	23	17	14	16	12	10	10	8	6	4	3	2	0



Total Luminaire Optical Efficiency = 90.9%