

TYPE \_\_\_\_\_

## FEATURES

The G4-DI-8 presents a unique ultra shallow winged profile and is one variation of a complete family of suspended linear fluorescent luminaires. The G4-DI-8 is a direct/indirect version of the family of luminaires and provides exceptional performance. Constructed of perforated steel and aluminum extrusions, it features a "reveal" between modules in continuous rows. The computer designed optical system creates a widespread indirect distribution while offering a wide variety of direct perforated accent patterns along its wings creating its own unique styling contrast.

## SPECIFICATIONS

**Housing:** One piece die formed 20 gauge cold rolled steel welded construction forming a 1 3/4" x 8 7/8" wave profile. Diagonal obround pattern is 3/16" x 5/8" straight with white .020 translucent overlay. The housing ends are die formed extruded aluminum. The decorative intermediate end caps are provided for mounting and joining individual fixtures in rows. Finished ends are laser cut aluminum, with no exposed hardware or knockouts.

**Reflector:** Die formed 20-gauge cold rolled steel minimum 90% reflectivity in high gloss white enamel with die formed .025 specular anodized aluminum center reflector.

**Electrical:** Ballast is electronic, high power factor, thermally protected class P, sound rated A, with less than 10% total harmonic distortion. The minimum number of ballasts will be used unless otherwise specified.

**Mounting:** Standard Installation is an adjustable self-locking aircraft cable assembly 48" x 3/32" in diameter with 5" canopy. One 16/4 SJT straight 54" cord is supplied with each power feed. Standard pendants are available in 24" lengths. See Accessories for additional mounting.

**Finish:** Fixture housing and steel components are finished in baked white enamel applied over a five stage pretreatment process.

**Lamps:** Fixtures are provided for use with two 28 watt T5 or two 54 watt T5 HO lamps. (Supplied by Others)

**Certification:** Luminaires are U. L. listed, C. S. A. certified and are Union Made in the United States of America I.B.E.W.

## ORDERING GUIDE

MODEL NO.	DIRECTION	SHIELDING	LAMPS	MOUNTING	LENGTH	FINISH	VOLTAGE	OPTIONS
<b>G4</b>	<b>DI</b>	<b>8</b>						
<b>G4</b>	<b>DI</b> = Direct/ Indirect	<b>8</b> =Obround Diagonal	<b>228T5</b> <b>254T5 HO</b>	<b>AC</b> = Cable <b>PD</b> = Pendant	<b>4</b> = 4 ft <b>8</b> = 8 ft	<b>W</b> = White <b>CC</b> = Custom Color	<b>120v</b> <b>277v</b>	<b>See Options Below</b>

O=Other  
Specify

See Accessories

for other, please  
enter row length  
(eg. 48=48ft)

Example: **G4-DI-8-254T5HO-AC-4-W-277V**

Generation Four with diagonal obround continuous pattern with opal overlay for two 54 watt T5 HO lamps with two 48 inch aircraft cables and power feed four foot fixture finished in baked white enamel with 277v electronic ballast less than 10% total harmonic distortion.

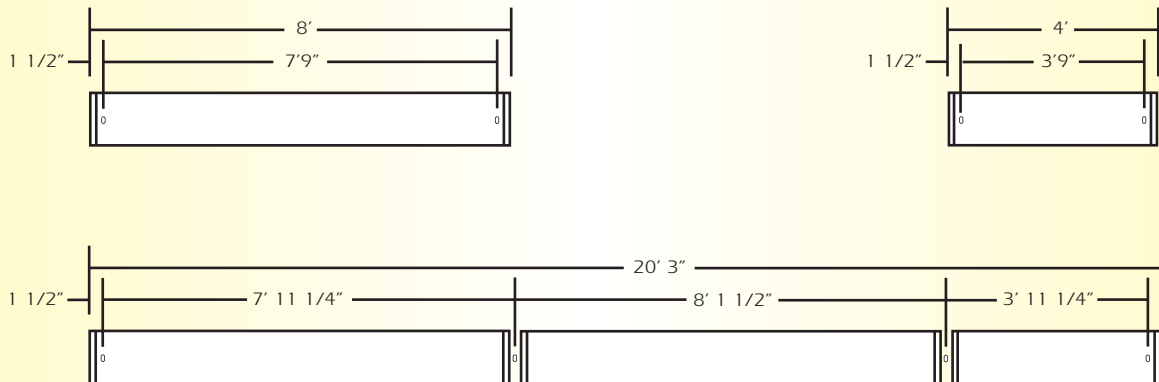
## OPTIONS

<b>DIM=</b>	Dimming Ballast
<b>EPC=</b>	Emergency Battery Pack
<b>EMC=</b>	Emergency Circuit
<b>TCW=</b>	Two Circuit Wiring
<b>TDW=</b>	Tandem Wiring
<b>QCW=</b>	Quick Connect Wiring
<b>OTH=</b>	See Accessories for other options available

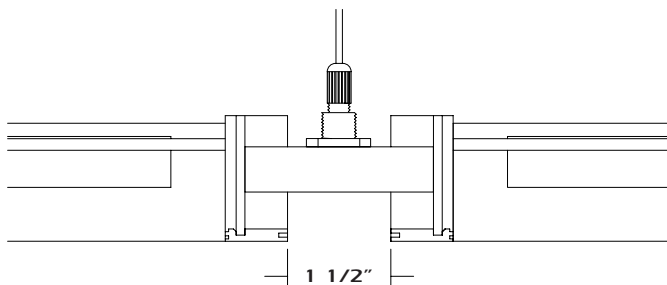
# Generation Series 4

G4-DI-8-2T5

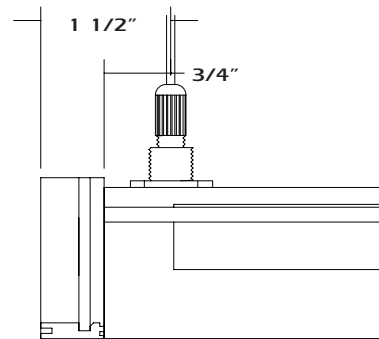
## LINEAR SECTIONS AND SUSPENSION LOCATION



## INSTALLATION PREPARATION

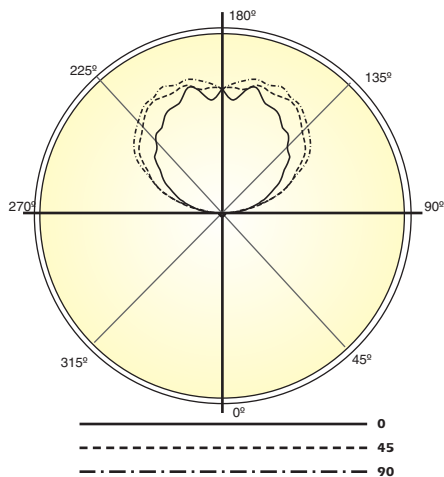


TYPICAL JOINT DETAIL



TYPICAL END DETAIL

## PHOTOMETRY



LAMP (2) 54W T5 HO  
LUMENS: 5000 PER LAMP

### Candela Distribution:

Vert. Angle	0	22.5	45	67.5	90
0	39	39	39	39	39
5	38	35	23	32	25
15	33	30	26	27	34
25	30	24	26	33	28
35	23	20	28	30	33
45	21	24	29	31	31
55	19	19	25	33	34
65	12	18	27	32	38
75	10	15	23	36	33
85	5	18	31	46	51
95	215	181	145	120	108
105	506	624	656	646	650
115	809	965	1098	1118	1125
125	1076	1266	1394	1479	1504
135	1332	1495	1674	1716	1745
145	1479	1606	1827	1912	1918
155	1620	1742	1875	1960	2011
165	1794	1773	1847	1914	1956
175	1687	1786	1822	1869	1776
180	1832	1832	1832	1832	1832

Optical Distribution:  
98% Indirect: 2% Direct

### Coefficients of Utilization - Zonal Cavity Method:

pfc = 0.20

pcc	.8			.7			.5			.3			.1			0		
pw	.7	.5	.3	.1	.7	.5	.3	.1	.5	.3	.1	.5	.3	.1	.5	.3	.1	0
RCR																		
0	68	68	68	68	59	59	59	59	41	41	41	24	24	24	9	9	9	2
1	62	59	57	54	53	51	49	47	35	34	33	21	20	20	7	7	7	1
2	56	52	48	44	48	44	41	38	31	29	27	18	17	16	6	6	6	1
3	51	45	40	37	44	39	35	32	27	25	22	16	15	14	5	5	5	1
4	47	40	35	31	40	34	30	27	24	21	19	14	13	11	4	4	4	1
5	43	35	30	26	37	30	26	23	21	18	16	13	11	10	3	3	3	0
6	39	31	26	22	33	27	23	19	19	16	14	11	10	8	3	3	3	0
7	36	28	23	19	31	24	20	17	17	14	12	10	8	7	2	2	2	0
8	33	25	20	17	28	22	17	14	15	12	10	9	7	6	2	2	2	0
9	31	23	18	14	26	20	15	13	14	11	9	8	7	6	2	2	2	0
10	29	21	16	13	24	18	14	11	13	10	8	7	6	5	2	2	2	0



Total Luminaire Optical  
Efficiency = 71.4%