

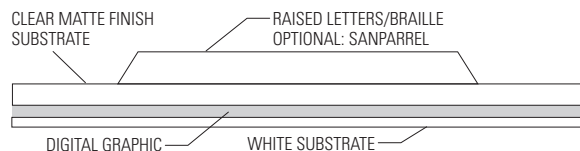
PRODUCTION STYLES

InPro SignScape offers different production styles for the construction of signs to meet your specific needs.



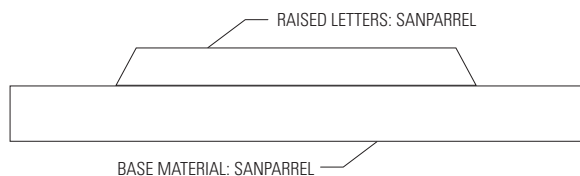
DIGITAL GRAPHICS

Image is sub-surface printed on a clear, non-glare surface. Options include ADA raised characters and Grade 2 Braille.



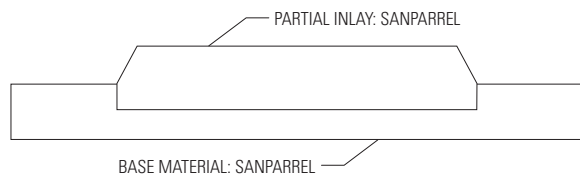
TACTILE

Letters are securely adhered to sign. Used for compliancy with ADA raised characters.



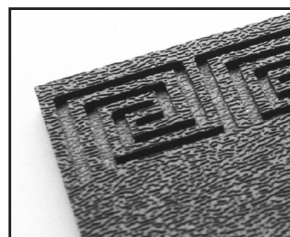
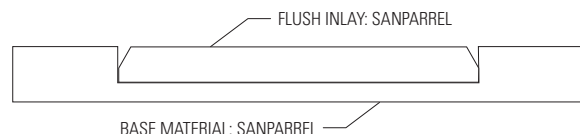
PARTIAL INLAY

Engraved and raised letter process where the letters are secured partially inside the engraved text. Used for compliancy with ADA raised characters. For use in high abuse and vandal prone areas.



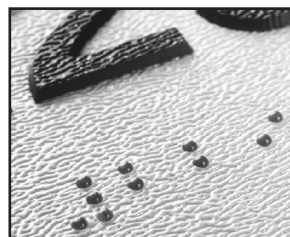
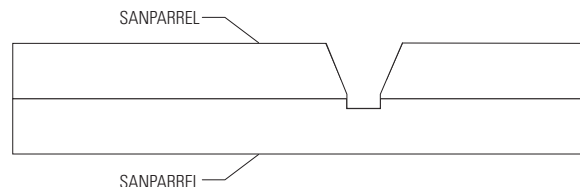
FLUSH INLAY

Combination of engraved and raised letter process where letters are secured inside the engraved text. For use in high abuse and vandal prone areas.



ENGRAVED

Text and graphics are routed into the sign.



GRADE 2 BRAILLE

A communications system for the blind that uses characters made up of the injected clear Rasters™ Method.

