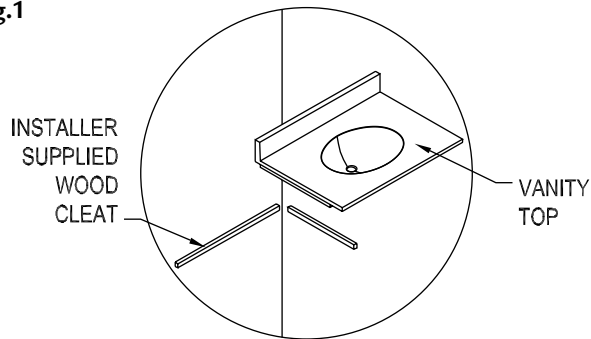


Installation Instructions

Lippert® Modesty Wall

Please read all instructions
before installing products.

fig.1



1. Level the vanity top and measure the distance from the bottom of the vanity top to the floor along the edge where the modesty wall will be located. See Figure 1.
2. Cut the modesty wall the required height. Scribe and sand the wall to match any unevenness in the floor or back wall.
3. Attach the wall to the floor and the back wall with installer supplied angle brackets. See Figure 2.
4. Attach installer supplied wood block to support the edge of the vanity top. See Figure 3.

fig.2

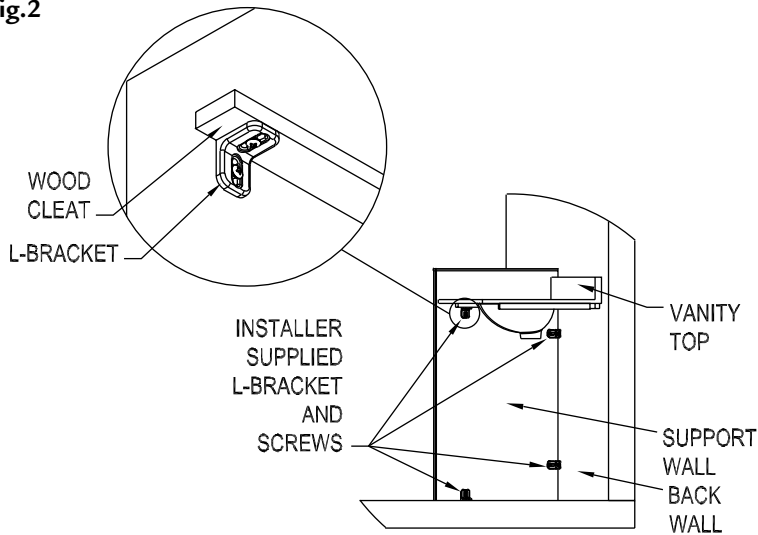


fig.3

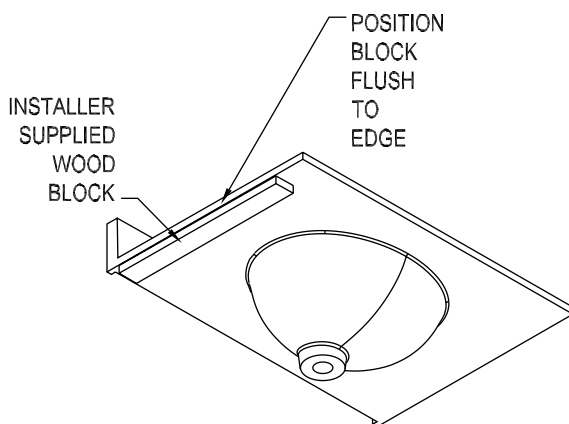
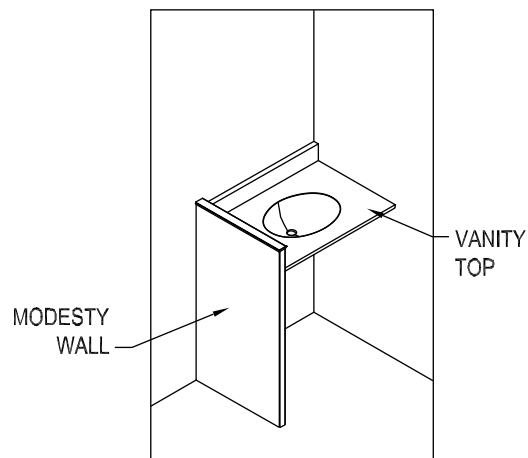


fig.4 - Completed Installation



IPC.720/REV.1