

Lippert® Vanity Tops



LIPPERT® *Cultured Marble*

- ▶ Designed to fit your needs with standard straight tops or custom top styles such as angled or L-shape tops
- ▶ One piece size must fit within a 60" x 140" rectangle; larger tops can be ordered in two pieces that butt together
- ▶ 4" coved backsplash standard for a finished appearance on 19" deep and 22" deep tops, detached backsplash and integral or detached sidesplash available, sizes up to 24" deep available
- ▶ 23/4" coved backsplash standard on a 17" deep top, detached backsplash and sidesplash available
- ▶ Large selection of cultured marble colors to allow for design flexibility
- ▶ Seven standard integral ink styles available
- ▶ Vessel sink, Decolav stainless steel undermount sink and Barclay china undermount sink available
- ▶ Standard faucet drills include a 4" spread, single faucet and 8" spread
- ▶ Four edge profiles to select from for a customized top
- ▶ For an easier installation, all standard cultured marble vanity tops have a scribe to ensure flush to the wall installations



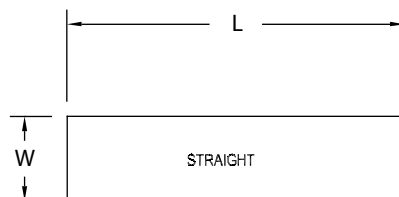
IPC.711/REV.2

P.O. Box 406 · Muskego, Wisconsin 53150 USA
inprocorp.com
Nationwide 800.222.5556/Fax 888.715.8407
International Sales 262.679.5521/Fax 262.679.5524

INPro
IPC Interior Protection Products
and Decorative Surfaces

Vanity Top Shapes & Sizes Detail Drawings

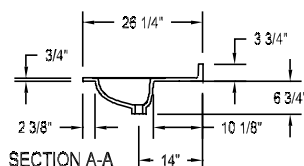
Standard Vanity Top



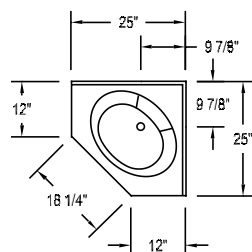
Standard Vanity Top Sizes	
Includes vanity top, 4" coved backsplash, centered integral bowl, 4" faucet spread drilling unless otherwise specified.	
Style	length x width
Single Bowl	19" x 17"
	25" x 17"
	31" x 17"
	37" x 17"
	25" x 19"
	31" x 19"
	37" x 19"
	25" x 22"
	31" x 22"
	37" x 22"
	43" x 22"
	49" x 22"
	61" x 22"
	73" x 22"
Double Bowls	61" x 22" 73" x 22"

Corner Vanity Tops

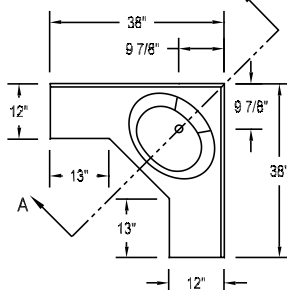
Available with integral Ovallav 2000 sink only with 3" integral backsplash on two sides



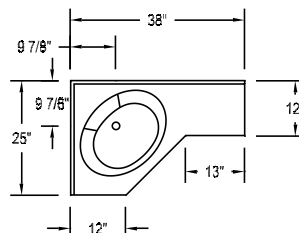
Small Corner Top



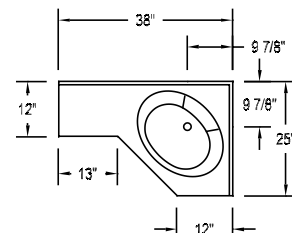
Large Corner Top



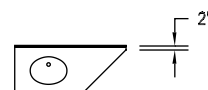
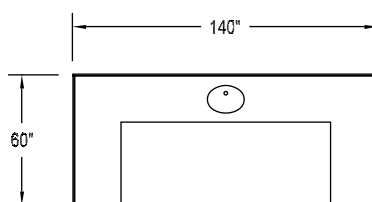
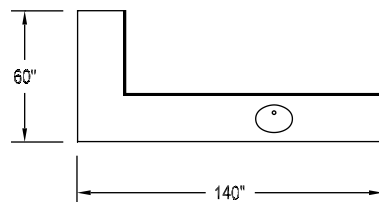
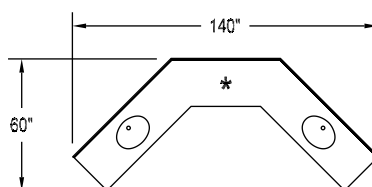
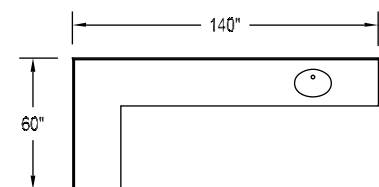
Corner Top with Leg, Bowl Left



Corner Top with Leg, Bowl Right



Custom Vanity Tops

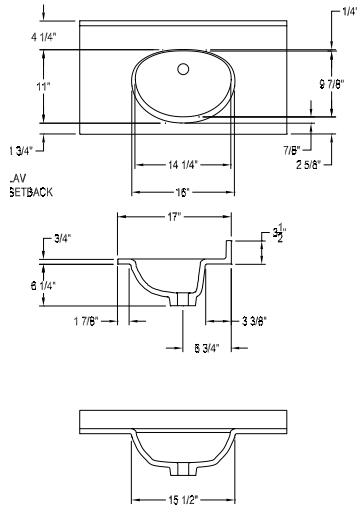


* Require template

Lippert® Vanity Tops Sink Styles

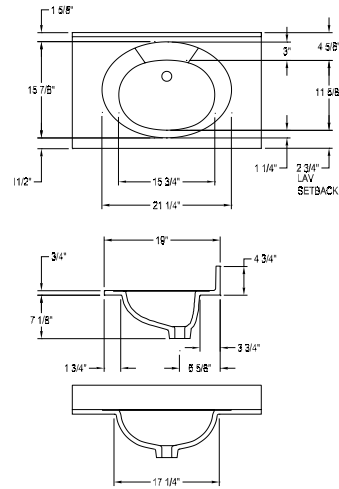
Ovallav 1410

with drip ring

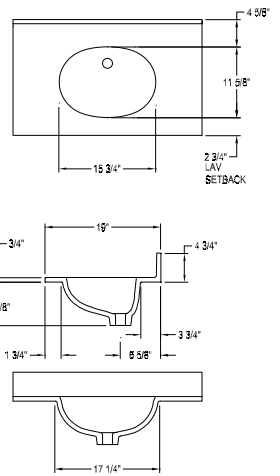


Ovallav 2000

with drip ring

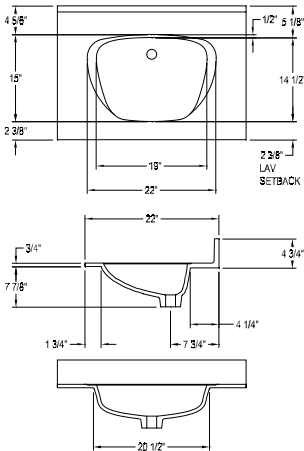


without drip ring

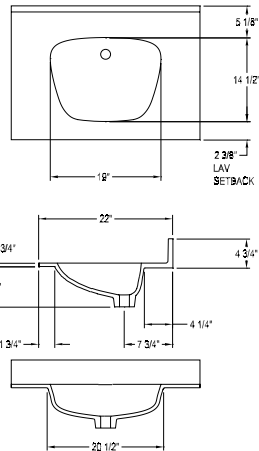


Naturelav

with drip ring

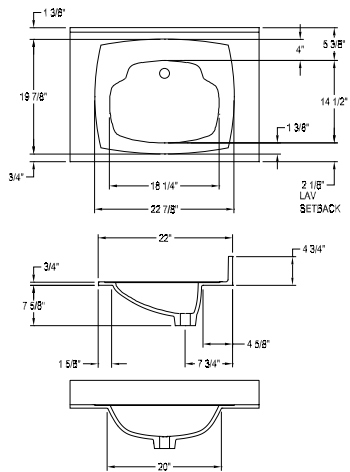


without drip ring

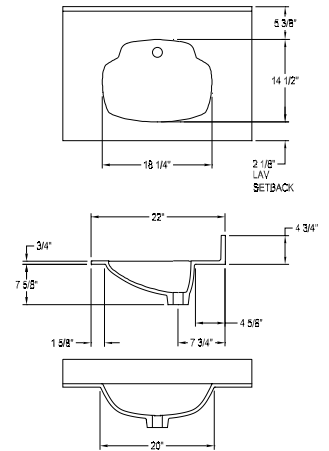


Aurora

with drip ring



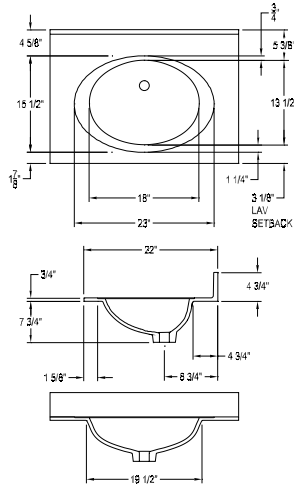
without drip ring



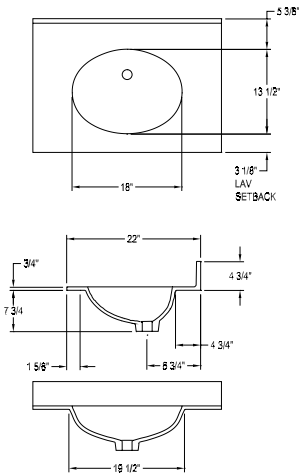
Lippert® Vanity Tops Sink Styles

Ovallav 2300

with drip ring

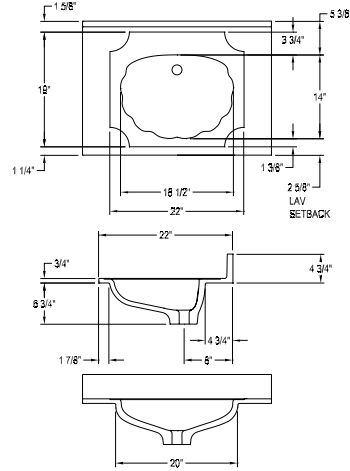


without drip ring

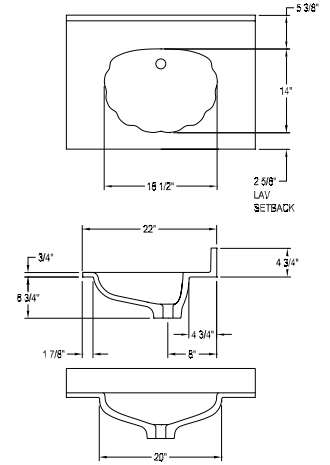


Shellav

with drip ring

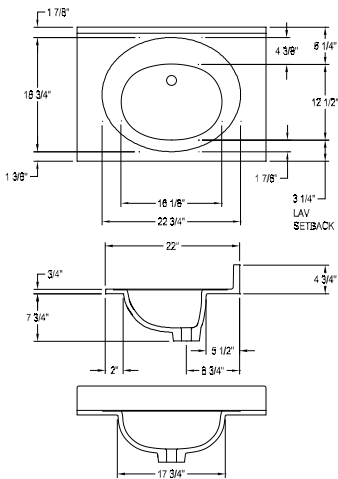


without drip ring

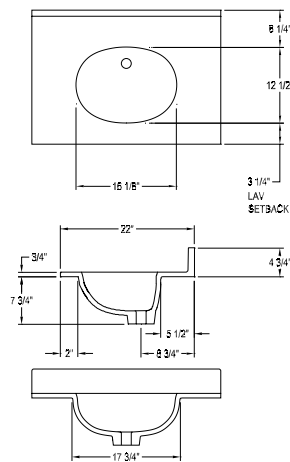


M400

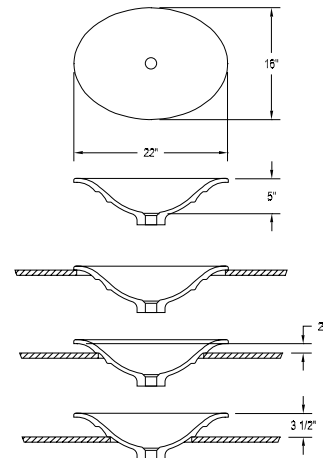
with drip ring



without drip ring

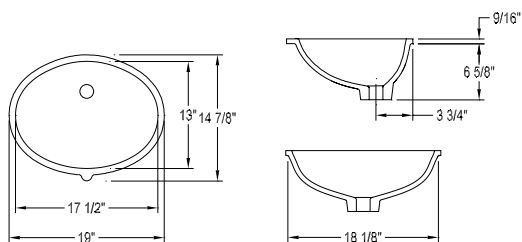


Lotus Lav Vessel

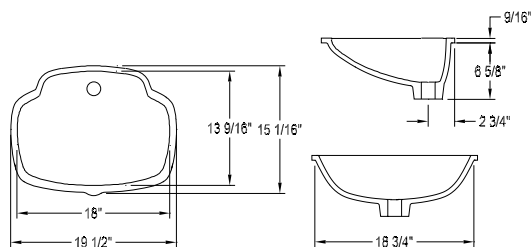


Lippert® Vanity Tops Undermount Sink Styles

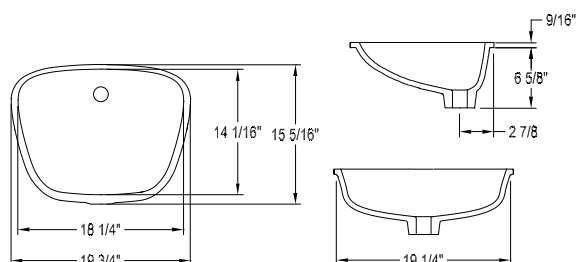
Undermount Ovallav 2300



Undermount Aurora

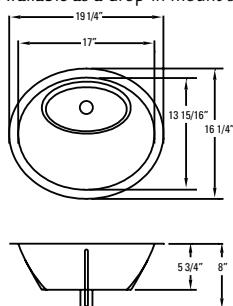


Undermount Naturelav

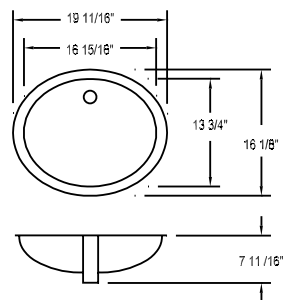


Undermount Decolav Stainless Steel

Available as a drop-in mount sink



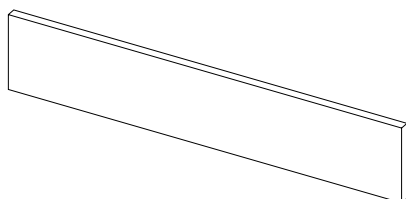
Undermount Barclay China



Splashes

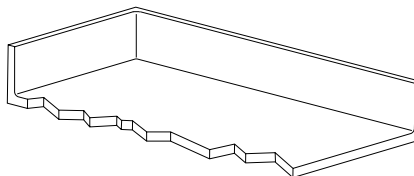
Standard Sidesplash

1/2" thick, for tops with coved backsplash.



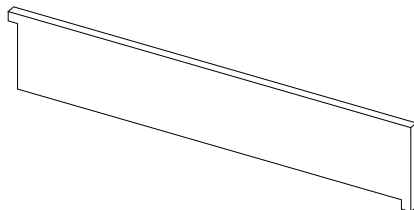
Integral Sidesplash

3/4" thick, for 22" deep tops with a minimum length of 31" and coved backsplash, available on one side only. Standard thick edge only. Minimum of 13-1/2" from side of top to center of sink.



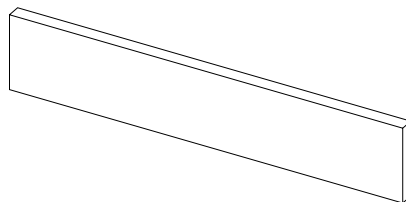
Special Sidesplash

1/2" thick, for 22" deep tops with coved backsplash to cover up to 1/2" of space between top and wall. Standard thick edge vanity tops only.



Detached Backsplashes and Sidesplashes

3/4" thick, for use on tops without integral backsplash. Standard 4" height, other heights available.



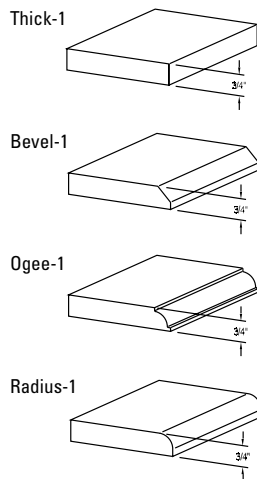
Lippert® Vanity Tops

Detail Drawings

Edge Treatments

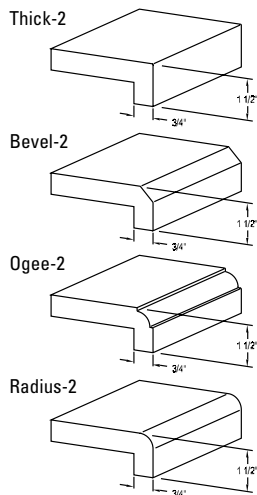
Edge Treatment 1

Available only with detached or no backsplash vanity tops.
Also available on flat stock.



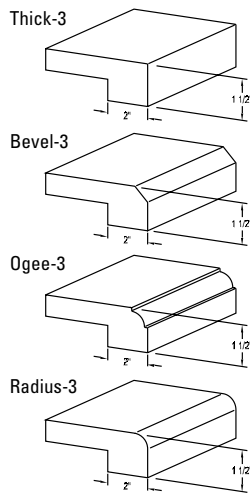
Edge Treatment 2

Designed to hang over cabinet.
Available only with detached or no backsplash vanity tops. Also available on flat stock.



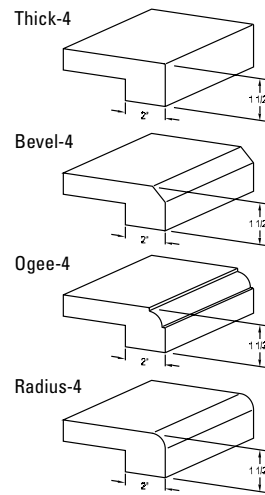
Edge Treatment 3

Designed to sit on top of cabinet.
Available only with integral backsplash on vanity tops.



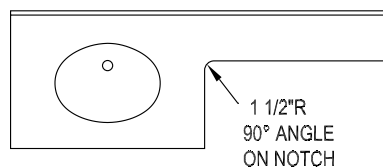
Edge Treatment 4

Designed to sit on top of cabinet.
Available only with detached or no backsplash on vanity tops. Also available on flat stock.

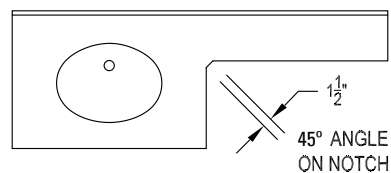


Notch Details for Banjo Tops

For thick and radius edge banjo, top will have a 90° angle on the notch



For bevel and ogee edge banjo, top will have a 1 1/2" inside angle on notch

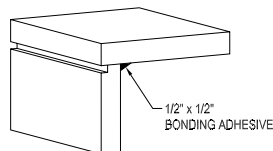
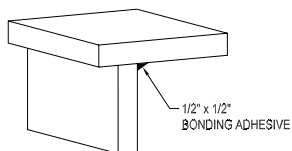


Lippert® Vanity Tops Detail Drawings

Aprons

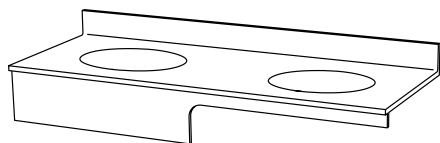
3/4" setback

1/4" x 1/4" reveal



Custom Apron Applications

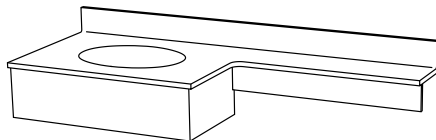
Notched for Wheelchair Access



Curved Front Apron



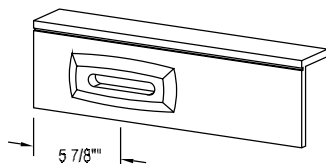
Two Different Size Aprons on One Top



Apron Accessories

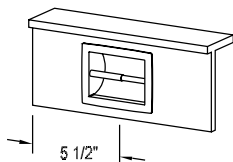
Integral Facial Tissue Dispenser

Requires a minimum of 8" apron height and 11-3/4" length. Metal box to hold tissue box is factory bonded to back of apron.



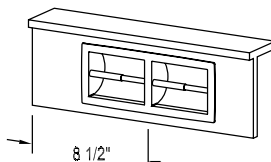
Integral Single Toilet Paper Holder

Requires a minimum of 8" apron height and 11" length; includes plastic roller.



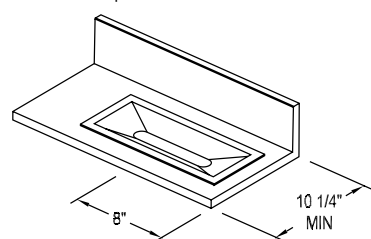
Integral Double Toilet Paper Holder

Requires a minimum of 8" apron height and 17" length; includes two plastic rollers.



Drop-In Facial Tissue Dispenser

Requires a minimum of 16" length; metal box to hold a 9-1/2"x4-3/4"x2" tissue box is factory bonded to back of dispenser which can be lifted out of cutout in top.



Lippert® Vanity Tops

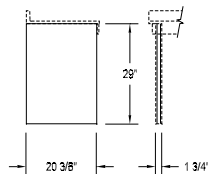
Detail Drawings

Support Walls and Support Legs

Designed for use when vanity top is not supported by a cabinet. Each of these options are fully assembled by InPro over a wood core or wood framework.

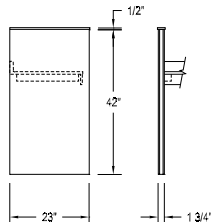
Support Wall

Vanity top rests on top of wall. Consists of (2) 20-3/8" x 29" x 3/8" and (1) 1" x 29" x 3/8" walls or specify dimensions that fit your needs. (show drawing)



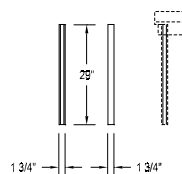
Modesty Wall

Used next to the vanity top and has a wood cleat factory bonded to a specified height to support the top. Consists of (2) 23" x 42" x 3/8", (1) 1" x 42" x 3/8" and (1) 23-1/8" x 2-1/4" x 1/2" walls or specify dimensions that fit your needs.



Support Leg

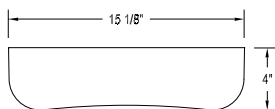
Can be used in place of a standard metal leg. Consists of (2) 1-3/4" x 29" x 3/8" and (2) 1" x 29" x 3/8" legs or specify height to fit your needs.



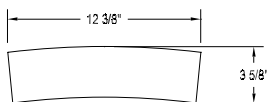
Faucet Plates

1/4" thick decorative piece designed to cover existing faucet drillings and are used as a template to drill new holes. Specify new faucet drilling size.

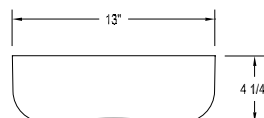
Ovallav 2300 Faucet Plate



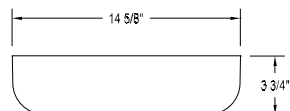
Ovallav 2000 Faucet Plate



Shellav Faucet Plate



Naturelav Faucet Plate



Aurora Faucet Plate

