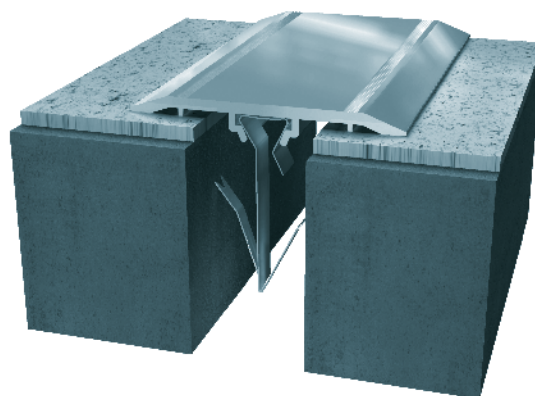


801, 802, 804 Series

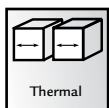
A01 - Floor to Floor

A02 - Floor to Wall



Movement Rating $\pm 25\%$ to $\pm 50\%$

Product Guide



801

- ▶ Designed with beveled edges for pedestrian safety
- ▶ Easy to install
- ▶ Economical solution for retrofit and surface mount installations
- ▶ Mill finish aluminum
- ▶ Available in stainless steel and brass
- ▶ Load rated
- ▶ Wider widths available

802

- ▶ Designed to accommodate various flooring thicknesses from carpet to VCT
- ▶ Overlap design reduces sightline
- ▶ Easy to install
- ▶ Economical solution for retrofit and surface mount installations
- ▶ Mill finish aluminum
- ▶ Load rated

804

- ▶ Designed for interior floors
- ▶ Spring clip design for easy on-site installation
- ▶ Attractive and economical solution for retrofit and surface mount applications
- ▶ Mill finish aluminum
- ▶ Seamlessly integrates with coordinating wall and ceiling systems

Wall 804-A07/A09 Ceiling 804-A07/A09

SYSTEM DATA

Application	System	W		H1		H2		S		B		Movement +/-				Load	
		Joint Width		Frame Height 1		Sub Height 2		Sight Line		Blockout		Horizontal		Vertical		US ton	kN
		US	mm	US	mm	US	mm	US	mm	US	mm	US	mm	US	mm		
Floor/Floor	801-A01-025	1"	25	1/8"	3	*	*	4 1/8"	105	*	*	1/2"	13	*	*	3.9	35
	801-A01-050	2"	51	1/8"	3	*	*	5 5/8"	143	*	*	1"	25	*	*	3.9	35
Floor/Wall	801-A02-025	1"	25	1/8"	3	*	*	1 1/2"	38	*	*	1/2"	13	*	*	3.9	35
	801-A02-050	2"	51	1/8"	3	*	*	3"	76	*	*	1"	25	*	*	3.9	35

Application	System	W		H1		H2		S		B		Movement +/-				Load	
		Joint Width		Frame Height 1		Height 2		Sight Line		Blockout		Horizontal		Vertical		US ton	kN
		US	mm	US	mm	US	mm	US	mm	US	mm	US	mm	US	mm		
Floor/Floor	802-A01-050/3	2"	51	1/8"	3	1/8"	4	2"	51	*	*	1/2"	13	*	*	3.9	35
	802-A01-050/6	2"	51	1/8"	3	1/4"	6	2"	51	*	*	1/2"	13	*	*	3.9	35
	802-A01-050/10	2"	51	1/8"	3	3/8"	10	2"	51	*	*	1/2"	13	*	*	3.9	35

802 Series available in 3 sub heights – Specify /3 (1/8") for VCT, /6 (1/4") or /10 (3/8") for carpeting.

Application	System	W		H1		H2		S		B		Movement +/-				Load	
		Joint Width		Frame Height 1		Height 2		Sight Line		Blockout		Horizontal		Vertical		US ton	kN
		US	mm	US	mm	US	mm	US	mm	US	mm	US	mm	US	mm		
Floor/Floor	804-A01-025	1"	25	1/8"	4	*	*	3"	76	*	*	1/2"	13	1/8"	3	HP	HP
	804-A01-050	2"	51	1/8"	4	*	*	4 1/2"	114	*	*	1/2"	13	1/8"	3	HP	HP
Floor/Wall	804-A02-025	1"	25	1/8"	4	*	*	2"	51	*	*	1/2"	13	1/8"	3	HP	HP
	804-A02-050	2"	51	1/8"	4	*	*	3 1/4"	83	*	*	1/4"	6	1/8"	3	HP	HP



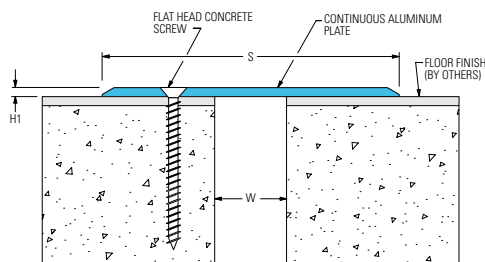
IPC.879/REV.7

P.O. Box 406 · Muskego, Wisconsin 53150 USA
 inprocorp.com
 Nationwide 800.222.5556/Fax 888.715.8407
 International Sales 262.679.5521/Fax 262.679.5524

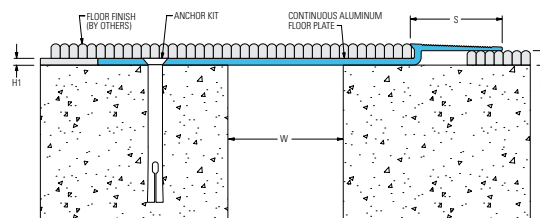
INPRO CORPORATION
 Interior and Exterior Architectural Products

801, 802, 804 Series Floor and Wall Systems

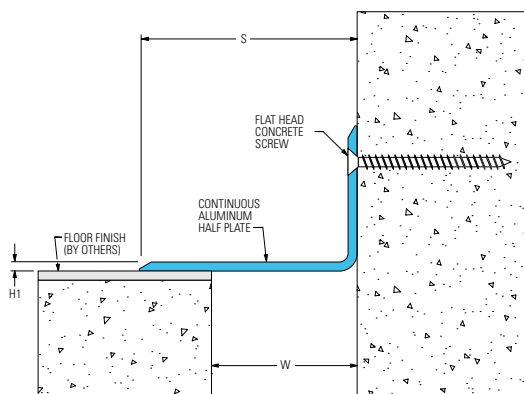
801-A01 Floor/Floor
(1" (25mm) system shown)



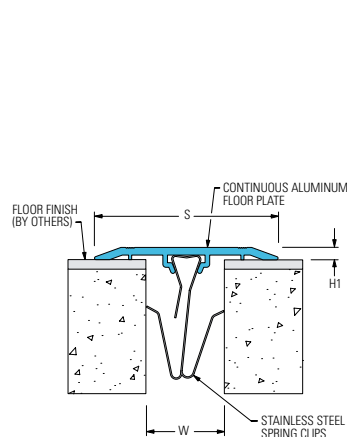
802-A01 Floor/Floor
(2" (50mm) system shown)



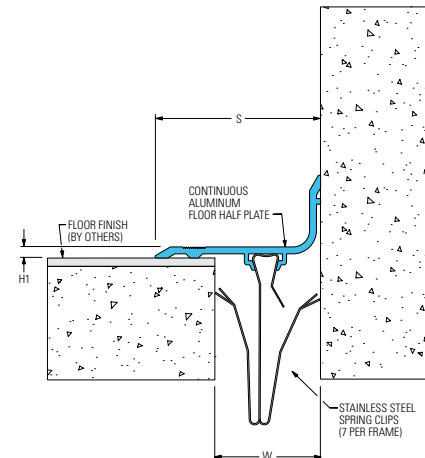
801-A02 Floor/Wall
(2" (50mm) system shown)



804-A01 Floor/Floor
(1" (25mm) system shown)

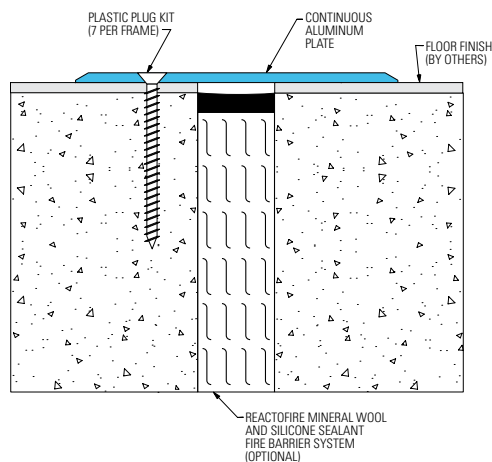


804-A02 Floor/Wall
(1 1/2" (38mm) system shown)



801, 802, 804 Series Options

801-A01 with Reactofire Mineral Wool & Silicone System
(1" (25mm) system shown)



804-A01 with Reactofire Mineral Wool & Silicone System
(1" (25mm) system shown)

