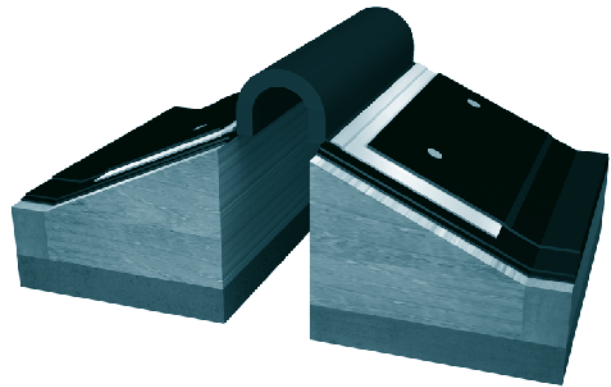


672, 674 Series

G01 - Roof to Roof

G02 - Roof to Wall



Movement Rating \pm 50%				
Product Guide				
	Seismic	Exterior	Fire Rated Option	Quick Ship Available

- ▶ Weatherproof roof system that will remain watertight during the severest seismic events
- ▶ Splicing kits or simple installation
- ▶ EPDM bellows with galvanized flanges standard
- ▶ Wider joint widths available
- ▶ Optional Neoprene bellows available
- ▶ Optional stainless steel, copper, aluminum and PDM flanges available
- ▶ Factory preformed transitions available
- ▶ Model 672 - available in 10' and 50' rolls

Application	System	W		H1		H2		S		B		Movement +/-				Load	
		Joint Width		Frame Height 1		Sub Height 2		Sight Line		Blockout		Horizontal		Vertical		US ton	kN
		US	mm	US	mm	US	mm	US	mm	US	mm	US	mm	US	mm		
Roof/Roof	672-G01-050	2"	51	*	*	*	*	*	*	*	*	1"	25	1"	25	*	*
	672-G01-075	3"	76	*	*	*	*	*	*	*	*	1 1/2"	38	1 1/2"	38	*	*
	672-G01-100	4"	102	*	*	*	*	*	*	*	*	2"	51	2"	51	*	*
	672-G01-150	6"	152	*	*	*	*	*	*	*	*	3"	76	3"	76	*	*
	672-G01-200	8"	203	*	*	*	*	*	*	*	*	4"	102	4"	102	*	*
Roof/Wall	672-G02-050	2"	51	*	*	*	*	*	*	*	*	1"	25	1"	25	*	*
	672-G02-075	3"	76	*	*	*	*	*	*	*	*	1 1/2"	38	1 1/2"	38	*	*
	672-G02-100	4"	102	*	*	*	*	*	*	*	*	2"	51	2"	51	*	*
	672-G02-150	6"	152	*	*	*	*	*	*	*	*	3"	76	3"	76	*	*
	672-G02-200	8"	203	*	*	*	*	*	*	*	*	4"	102	4"	102	*	*
Curb Flange Roof/Roof	674-G01-050	2"	51	*	*	*	*	*	*	*	*	1"	25	1"	25	*	*
	674-G01-075	3"	76	*	*	*	*	*	*	*	*	1 1/2"	38	1 1/2"	38	*	*
	674-G01-100	4"	102	*	*	*	*	*	*	*	*	2"	51	2"	51	*	*
	674-G01-150	6"	152	*	*	*	*	*	*	*	*	3"	76	3"	76	*	*
	674-G01-200	8"	203	*	*	*	*	*	*	*	*	4"	102	4"	102	*	*
Curb Flange Roof/Wall	674-G02-050	2"	51	*	*	*	*	*	*	*	*	1"	25	1"	25	*	*
	674-G02-075	3"	76	*	*	*	*	*	*	*	*	1 1/2"	38	1 1/2"	38	*	*
	674-G02-100	4"	102	*	*	*	*	*	*	*	*	2"	51	2"	51	*	*
	674-G02-150	6"	152	*	*	*	*	*	*	*	*	3"	76	3"	76	*	*
	674-G02-200	8"	203	*	*	*	*	*	*	*	*	4"	102	4"	102	*	*

Shear movement – 25% movement rating.

672 also available for extra wide joint widths, 10"-24".

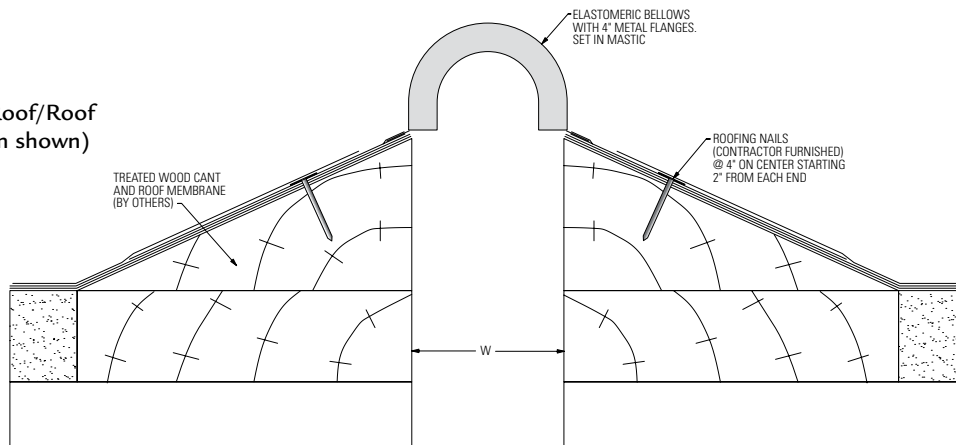
IPC.867/REV.5

P.O. Box 406 · Muskego, Wisconsin 53150 USA
 inprocorp.com
 Nationwide 800.222.5556/Fax 888.715.8407
 International Sales 262.679.5521/Fax 262.679.5524

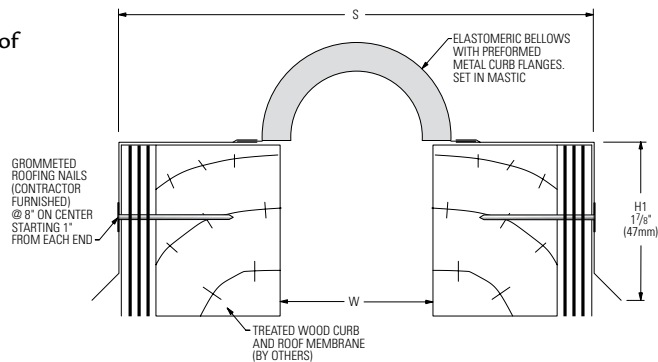
INPRO CORPORATION®
 Interior and Exterior Architectural Products

672, 674 Series Bellows Roof Systems

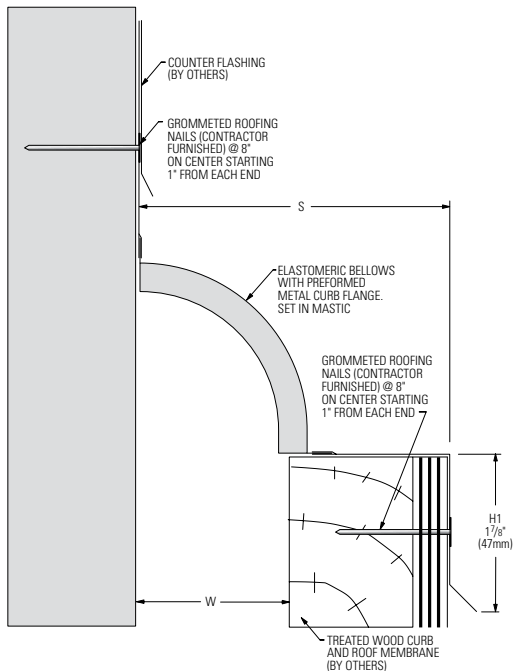
**672-G01 Canted Roof/Roof
(2" (50mm) system shown)**



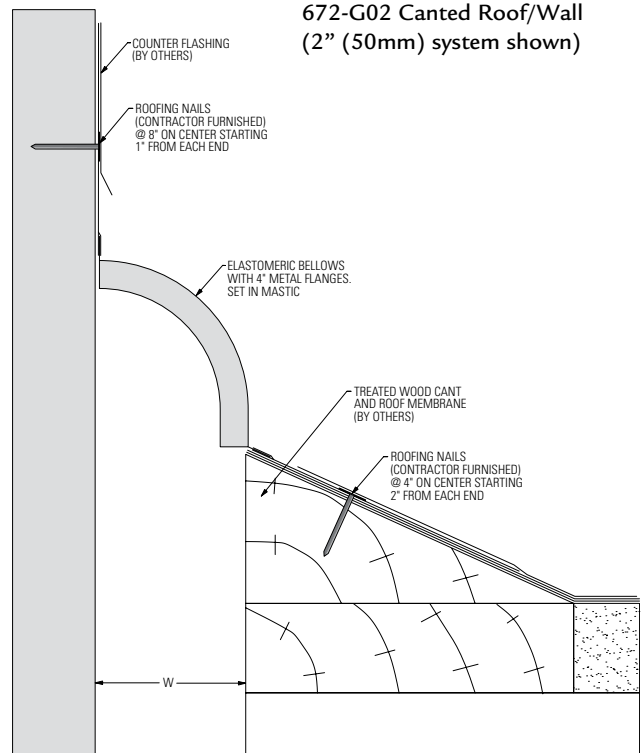
**674-G01 Curb Flange Roof/Roof
(2" (50mm) system shown)**



**674-G02 Curb Flange Roof/Wall
(2" (50mm) system shown)**

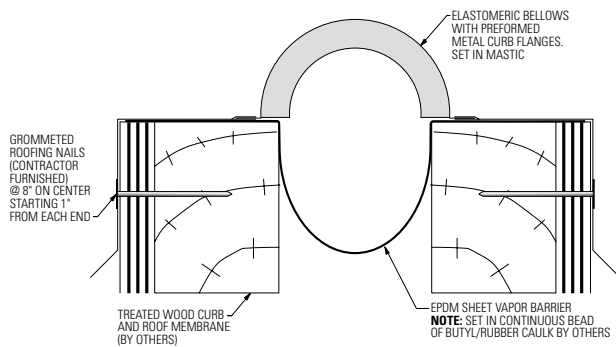


**672-G02 Canted Roof/Wall
(2" (50mm) system shown)**

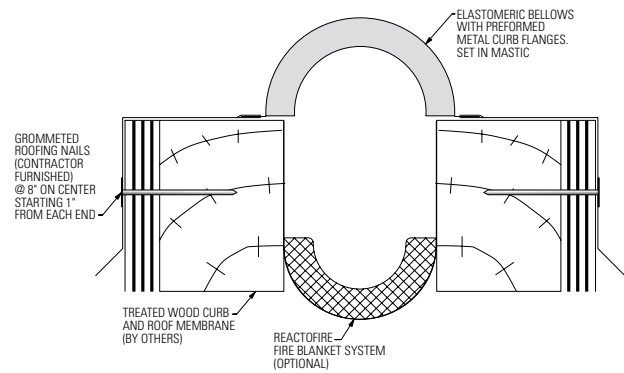


672, 674 Series Options

Wrap Around Vapor Barrier (674-G01-050 system shown)



Reactofire Fire Blanket System (674-G01-050 system shown)



Factory Preformed Intersections/Transitions
Consult factory for available configurations.

