

Installation Instructions

Joint System: 221, 222, 223-A02

Note: Verify that the structural gap and blockout dimension is in conformance with submittal data before beginning installation. If this is a Fire Rated Assembly, the fire barrier must be installed before the Architectural Joint System. Refer to the fire barrier instructions for specific system installation.

Fig. 1 (221-A02 Floor to Wall shown)

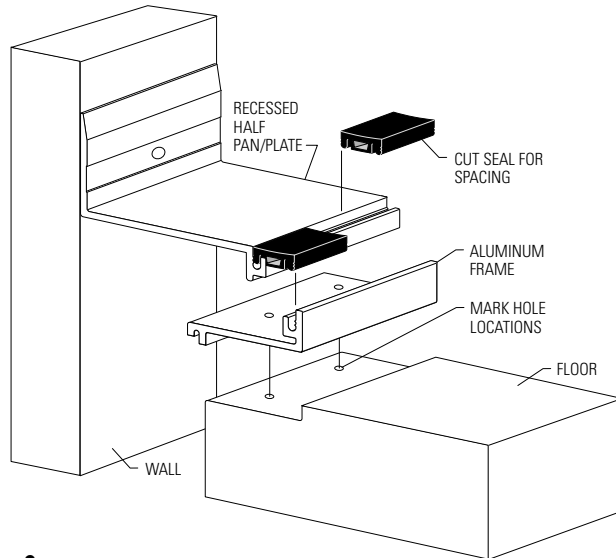


Fig. 2

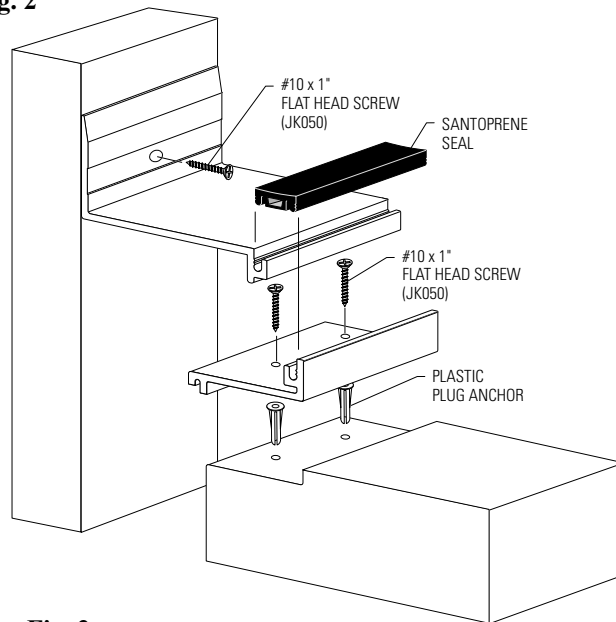
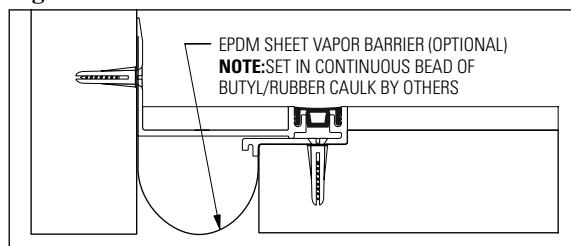


Fig. 2a



1. Install the architectural joint system on a level surface within the blockout. To determine blockout depth, deduct thickness of floor finish from frame height. Make sure top of floor frame is level with the finished floor height. This may require adding leveling compound to raise the top of the frame.

Figure 1

2. Cut the aluminum components to the desired length.
3. Place the floor frame in the blockout so that the angle of the base leg is against the side of the structural gap.
4. Mark the pre-drilled hole locations from the floor frame on the substrate.
5. Remove the floor frame from the blockout.

Figure 2

6. Drill holes in the blockout using a 1/4" (6mm) concrete drill bit to 1 1/8" (30mm) depth. Insert plastic plug anchors.
 - 6a. Optional EPDM Vapor Barrier: Lay continuous bead of butyl rubber caulk in the blockout and on the wall. Starting at one end of the frame assembly, place vapor barrier evenly in blockout and wall allowing the excess material to drape into the structural gap. If necessary, vapor barrier may be fastened to substrate with masonry nails. Fold ends up or weep out. (See Figure 2a)
7. Return the floor frame in position over the drilled hole locations and secure in place using one JK050 #10 x 1" flat head screw for each plastic plug.
8. Place the aluminum half pan/plate firmly against the finished wall with the base leg resting on the floor frame. Align level.
9. Mark the pre-drilled hole locations from the vertical leg of the half pan/plate on the wall substrate.
10. Remove the half pan/plate from the wall.
11. Drill all marked holes using 1/4" (6mm) drill bit to 1 1/8" (30mm) depth. Insert plastic plug anchors.
12. Return the half pan/plate into position over the drilled hole locations and secure in place using one JK050 #10 x 1" flat head screw for each plastic plug.
13. Insert the Santoprene seal into the recessed frame slots until the seal is flush with the top of the frame.

NOTE: To assist in installing the seal, apply a mist of soapy water solution to the back of the seal. A 1" wide seam roller may be used to fully engage the seal ears into the frame slots.

Installation Instructions

Joint System: 221, 222, 223-A02

Fig. 3 (221-A02 Floor to Wall completed installation)

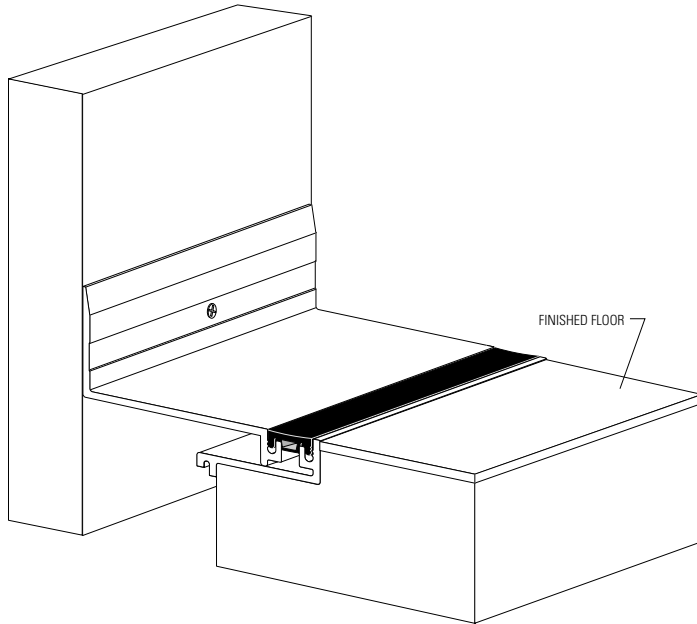
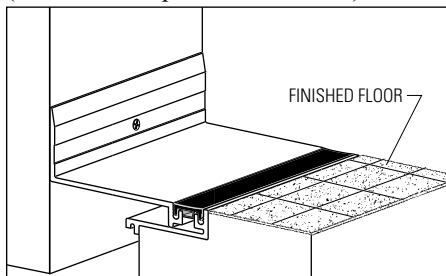


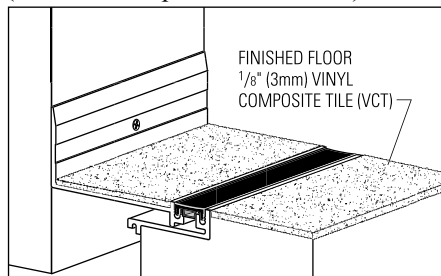
Figure 3

- 14.** Backfill the blockout and install the floor finish level to the top of the frame. For 222 and 223 systems, install floor finish level to the top of half pan/plate. Clean the exposed surfaces with a non-solvent cleaner, such as 409, as required.

(221-A02 completed installation)



(222-A02 completed installation)



(223-A02 completed installation)

