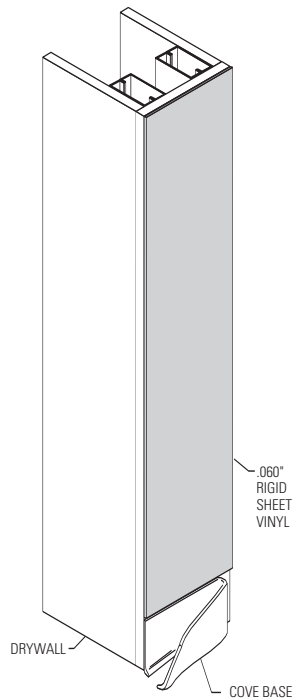


Installation Instructions

BluNose End Wall Protectors

Models: 150DBN, 160DBN

FIG. 1

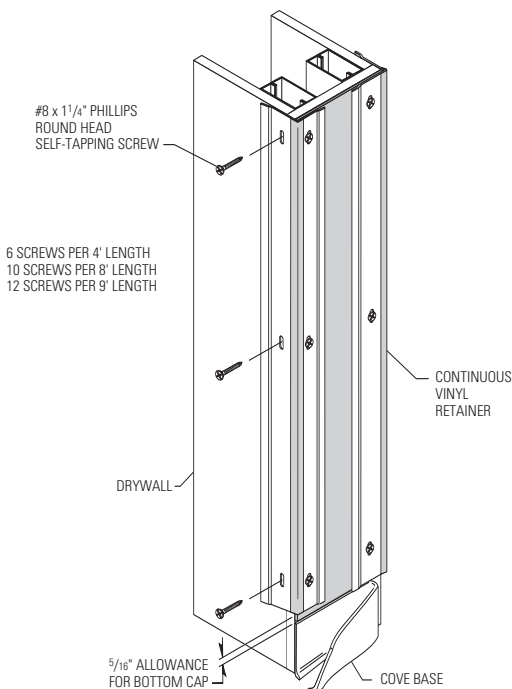


Please read all instructions before installing corner guards. Material must be stored, installed and used in environmentally controlled conditions.

1. Adhere sheet material to wall with factory applied adhesive backing or recommended IPC adhesive (Fastbond 30 Contact Cement, XT-2000 Adhesive, InPro Bond Adhesive). See Figure 1.
2. Position vinyl retainer against wall, leaving allowance for bottom cap. Secure retainer to the wall by staggering fasteners on each wing of the retainer. See Figure 2.

Note for concrete installation: Use the slotted tabs on the top and bottom caps to transfer and drill 1/4" (6.5mm) holes into the ends of the retainer. Also drill 1/4" (6.5mm) holes staggered on each wing of the retainer. Drill 6 holes per 4' (1.22m) length, 10 holes per 8' (2.44m) length or 12 holes per 9' (2.74m) length. Transfer the location of the mounting holes to the wall. Drill marked holes on wall using a 1/4" drill bit and position Alligator anchors into holes. Mount retainer on wall with #10 x 1-3/4" phillips pan head screws and tighten to secure.

FIG. 2

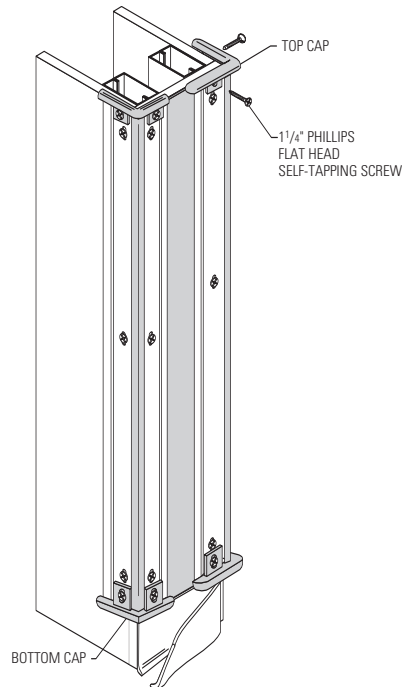


Installation Instructions

BluNose End Wall Protectors

Models: 150DBN, 160DBN

FIG. 3



3. Overlap the retainer with the mounting tabs of the top and bottom caps and attach them to retainer. Stagger the fasteners on each wing of the cap. See Figure 3.

Note for concrete installation: Overlap the retainer with the mounting tabs of the top and bottom caps and attach them to retainer and into the Alligator anchors using two, #8 x 1-1/2" phillips flat head screws per cap.

4. Position vinyl cover on retainer and adjust the top cap for a tight fit. Starting at the top, push cover onto retainer pressing over the entire length until it snaps into place. Attach second corner guard in the same manner. See Figure 4.

FIG. 4

