

Installation Instructions

Joint System: 107, 108, 109, 110-A01

Note: Verify that the structural gap and blockout dimension is in conformance with submittal data before beginning installation. If this is a Fire Rated Assembly, the fire barrier must be installed before the Architectural Joint System. Refer to the fire barrier instructions for specific system installation.

Fig. 1 (107-A01 Floor to Floor shown)

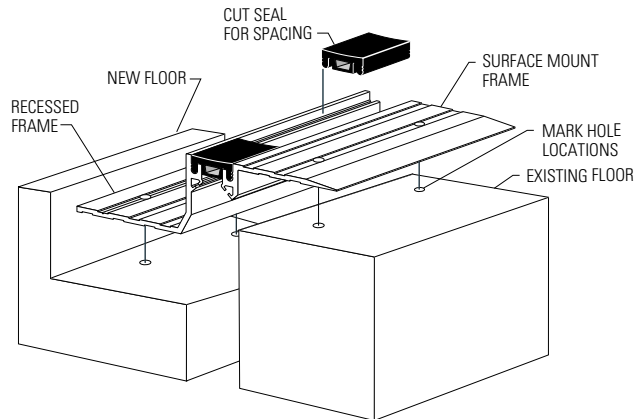


Fig. 2

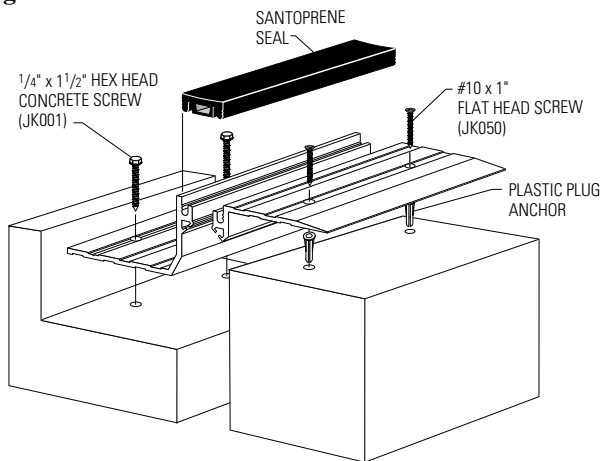
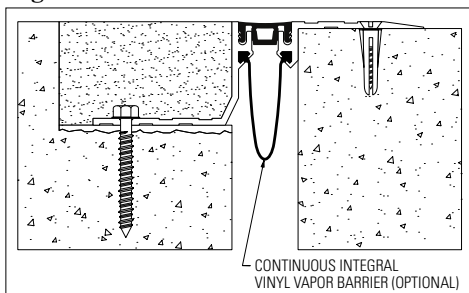


Fig. 2a



1. Install the architectural joint system on a level surface within the blockout. Make sure the top of the recessed frame is at a height level with the finished floor. This may require adding leveling compound to raise the top of the recessed frame.

Figure 1

2. Cut the aluminum frames to the desired length.
3. To properly space frames, cut three small 2" sections of seal. Insert one at each end and one in the center of each set of frames.
4. Place the recessed frame within the blockout and the surface mount frame on the existing substrate. Make sure the surface mount frame fits against the structural gap and the recessed frame base does not extend over the gap.
5. Mark the pre-drilled hole locations on the substrates.
6. Remove the frame assembly from the blockout.

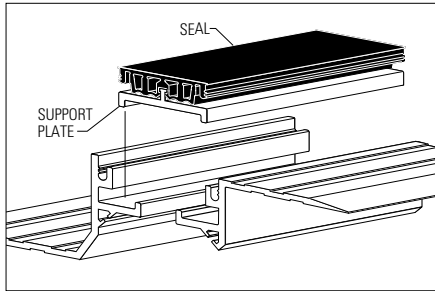
Figure 2

7. Drill blockout holes using a 3/16" (5mm) concrete drill bit to 1 5/8" (42mm) depth. Drill holes into existing substrate using a 1/4" (6mm) drill bit to a 1 1/8" (30mm) depth and insert plastic plug anchors.
 - 7a. Optional Integral Vapor Barrier: Starting at one end of the frame assembly, slide vapor barrier into dart receptacles (see Figure 2a).
8. Return the frame assembly into position over the drilled hole locations. Secure the recessed frame in place using JK001 1/4" x 1 1/2" hex head concrete screws. Secure the surface mount frame using JK050 #10 x 1" flat head screws. Remove the temporary spacers.

Installation Instructions

Joint System: 107, 108, 109, 110-A01

Fig 2b.



9. Insert the Santoprene seal into the recessed frame slots until the seal is flush with the tops of the frames.
NOTE: To assist in installing the seal, apply a mist of soapy water solution to the back of the seal. A 1" wide seam roller may be used to fully engage the seal ears into the frame slots.
 - 9a. For the 1" system, press the seal securely into the frame slots.
 - 9b. For the 2" and 3" systems, make sure the seal is first inserted into the support plate. Then, center the seal and aluminum support plate assembly over the frames' support legs (see Figure 2b).

Fig. 3 (107-A01 Floor to Floor completed installation)

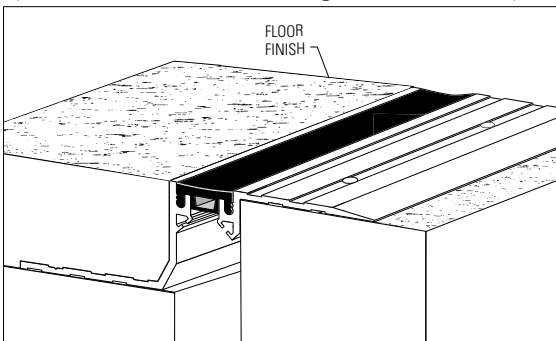


Figure 3

10. Backfill the blockout and install the floor finish level to the top of the recessed frame. For the 110 series, install the floor finish level to the side of the surface mount frame. For the 108 and 109 series, install floor finish over the surface mount frame flange level to the top of the seal. Clean the exposed surfaces with a non-solvent cleaner, such as 409, as required.