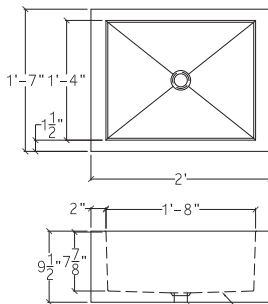


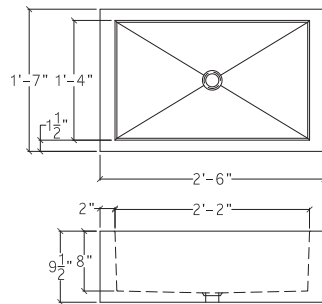
# madison sinks



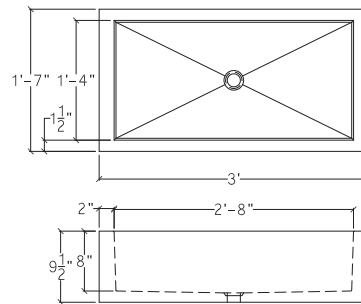
STANDARD



1170  
130 Lbs



1171  
156 Lbs



1172  
180 Lbs

1/4" PITCH TYP  
SPECIFY VANITY OR  
KITCHEN DRAIN

## The Story

The straight walled **Madison Sink** collection can be installed in a number of applications such as under mounted in a countertop, used as a traditional farm sink on a cabinet, or freestanding.

## Specifications

- Material: Concrete
- Weights: 130 Lbs. - 180 Lbs.
- 8 Standard colors
- 8 Premium colors
- Lead time 4-6 weeks
- 5 Year Structural Warranty
- Wholesale and trade discounts available
- Qualifies for LEED points.  
Please contact Get Real Surfaces for further information.
- Contact Get Real Surfaces for complete warranty information, volume pricing and custom color options.

## Ordering Information

MODEL	COLOR*
117X	XXXX
	Standard
	Premium
	Custom

\* See website or brochure for standard colors and designations. For custom colors provide sample or swatch for matching.