

Quick Fix | 7220

Modular



Colorways



1201
Superglue



1203
Fix-A-Flat



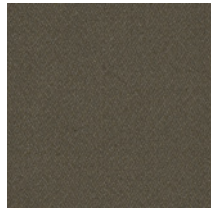
1204
Rubber Band



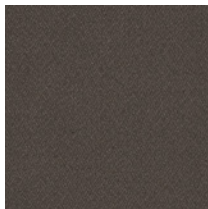
1205
Band-Aid



1207
Gorilla Glue



1208
Staple Gun



1209
Reboot



1210
Duct Tape

Product Specifications

| | |
|----------------------------|---|
| Construction | Patterned Loop |
| Backing | Nexus® Modular |
| Dye Method | Solution Dyed |
| Nylon Fiber Type | Encore® SD Ultima® (with recycled content) |
| Face Weight | 20 oz./sy (678 grams/m ²) |
| Pile Density | 5,317 oz./sy (197.28 kg/m ³) |
| Pattern Repeat | N/A |
| Gauge | 1/10 (3.94 rows/cm) |
| Stitches Per Inch | 10 stitches/in (3.94 stitches/cm) |
| Standard Size | 24" x 24" (60.96 cm x 60.96 cm) |
| Lifetime Warranties | Protection from Moisture Penetration, Protection from Delamination Failure, Dimensional Stability, Tuft Bind Strength (edge ravel, yarn pulls, zipping), Fiber Performance for Wear, Fiber Performance for Static, Colorfastness to Light and Atmospheric Contaminants, Stain Removal |

Environmental Specifications & Tests

| | |
|---|------------------------------------|
| Sustainable Carpet Assessment Standard | N/A |
| Indoor Air Quality | GLP 9716 |
| Total Recycled Content | 14%-19% |
| Pill Test | Yes |
| Flooring Radiant Panel | Class 1 |
| Smoke Density | Less than 450 flaming (ASTM E 662) |
| Static Test | Less than 3 kv (AATCC-134) |
| Lightfastness | Yes |
| ADA Compliance | Compliant For Accessible Routes |

Special Treatments

| | |
|---------------------------------|----------|
| ProTex® (Soil Release) | Yes |
| ProSept® (Antimicrobial) | Optional |
| Stain/Bleach Resistant | Yes |

Coordinating Products

Corporate Values Too Collection Problem Solved, Solutions

Installation Methods

Installation Methods Quarter Turn, Monolithic, Ashlar, Brick



Advantage!
www.gsaadvantage.gov