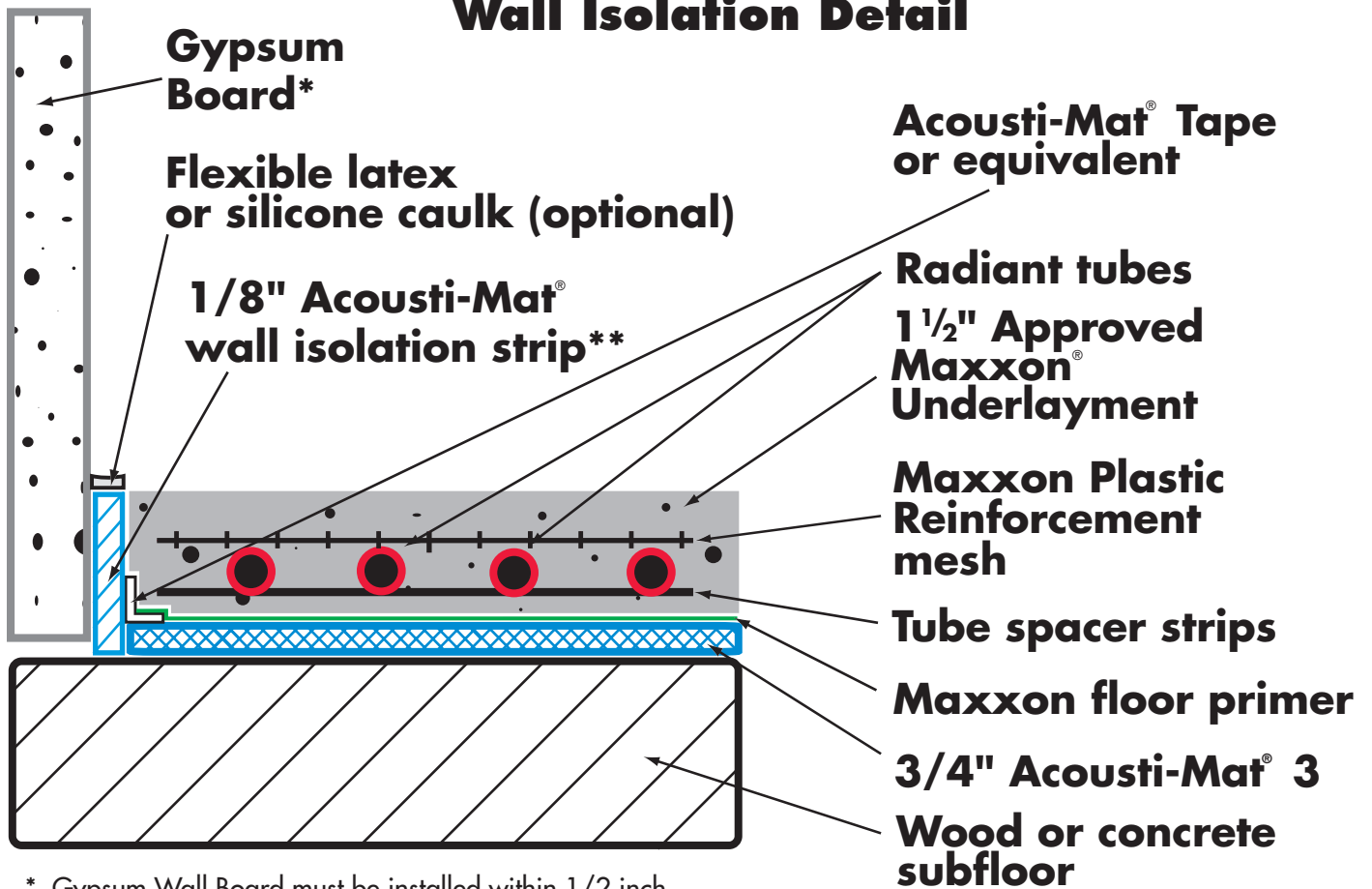


# Acousti-Mat® 3 with Radiant Floor Heating Wall Isolation Detail



\* Gypsum Wall Board must be installed within 1/2 inch of subfloor.

\*\* Acousti-Mat® Wall Isolation is installed around the perimeter of the entire room to receive Acousti-Mat 3, and around any floor penetrations such as toilet collars, electrical, plumbing, etc.